

Case Study

Public-Private Partnership

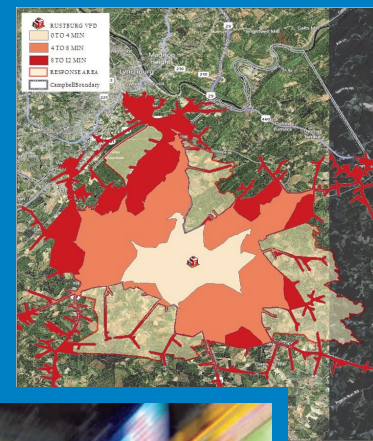
Enhanced Statewide Road Network for Public Safety

Ultimate Vision

To create and maintain a statewide enhanced road network. Realizing this vision requires contribution from local governments and collaboration across all levels of government. The Commonwealth is developing a statewide routable centerline, which will allow it to use commercial data to fill-in the gaps of local jurisdictions that do not maintain a routable centerline.

Case Study conducted by the National Alliance for Public Safety GIS Foundation. Full version available at :

www.napsgfoundation.org



CHALLENGE...

- Routable road network datasets are key GIS resources for public safety agencies
- Creating and maintaining a routable centerline is challenging and can be cost prohibitive
- Managing these critical datasets is expensive and time consuming for both commercial data providers and the public sector agencies that rely on them

SOLUTION EXAMINED

The Commonwealth of Virginia and NAVTEQ's public-private partnership supported the development of an enhanced statewide routable road network and centerline.

Why a Public-Private Partnership on Routable Road Data?

- Meet the needs of local public safety agencies that use off-the-shelf navigation systems as a key tool in emergency response
- Provide Virginia with a routable road network that can be shared across all levels of government
- Augment Virginia's own dataset with the routable attributes available from the NAVTEQ database

Assessing the Operational Impact

LESSONS LEARNED

Process of submitting and receiving data updates is seamless, and proved that the public-private partnership is **technically viable**

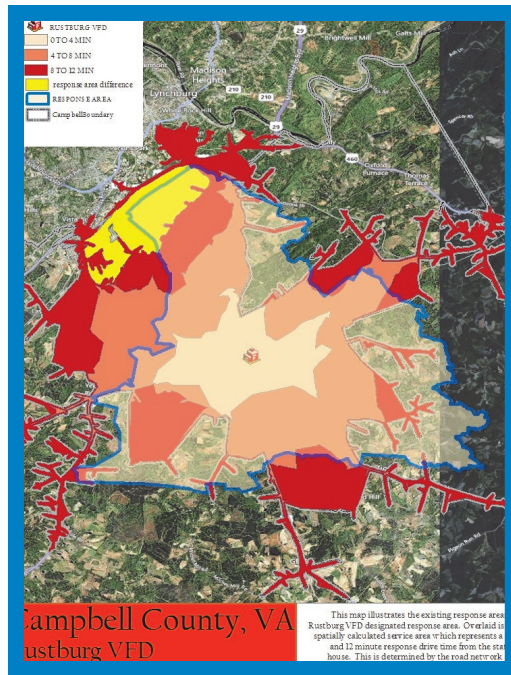
Establish **effective communication procedures** between the state and NAVTEQ as a key to success

Apply the **data attributes** available from NAVTEQ to maximize the value of the partnership for local end-users

Create and distribute an **ETL tool** to make the NAVTEQ data usable for local & county Computer Aided Dispatch (CAD) systems

Conduct extensive statewide **outreach & training to local end-users** (including public safety) on the use and application of the data available through the partnership

Consider including **Universities** under your state's partnership to **maximize near and long-term benefits**



RESULTS SUMMARY

NAPSG encourages other states and jurisdictions to explore innovative and cooperative approaches to sharing and managing geospatial data.

Consider employing innovative public-private models that enhance capabilities, reduce costs, and maximize long-term sustainability. It is through these approaches that more agencies across all levels of government understand the importance of having “one road”, or more precisely one common operating environment.

PARTNERSHIP BACKGROUND

The Commonwealth of Virginia implemented an enterprise licensing agreement (ELA) with NAVTEQ, involving data sharing and collaboration between NAVTEQ and any participating state and local agency in Virginia.

The workflow required to support this public-private partnership is multi-faceted and involves Virginia’s statewide, regional and local road centerline data providers.

TECHNICAL SOLUTION

NAVTEQ is the leading global provider of maps, traffic and places data enabling navigation and location-based services around the world. Their content enables intelligent location applications which support navigation for in-vehicle systems, and portable and wireless devices. Solutions with NAVTEQ data are used by public safety agencies nationwide.

National Alliance for Public Safety
GIS Foundation
1250 24th Street NW
Suite 300
Washington, DC 20037
t. 202-895-1711
www.napsfoundation.org