

- UICDS Core
- Commercial Application
- Not Committed 3/14/14
- 

- ADDITIONAL DATA SOURCES**
- CA Geological Survey
  - CA Fish and Wildlife
  - CA Water Resources
  - CA Seismic Safety Commission
  - CA Dept Toxic Substances
  - US Geological Survey
  - CA Dept of Public Health
  - Berkeley Seismological Laboratory
  - U.S. Army
  - ALOHA Chemical Plume Model
  - EERI

Note: Clearinghouse core hosted by CaOES



# Command Post Placement Options

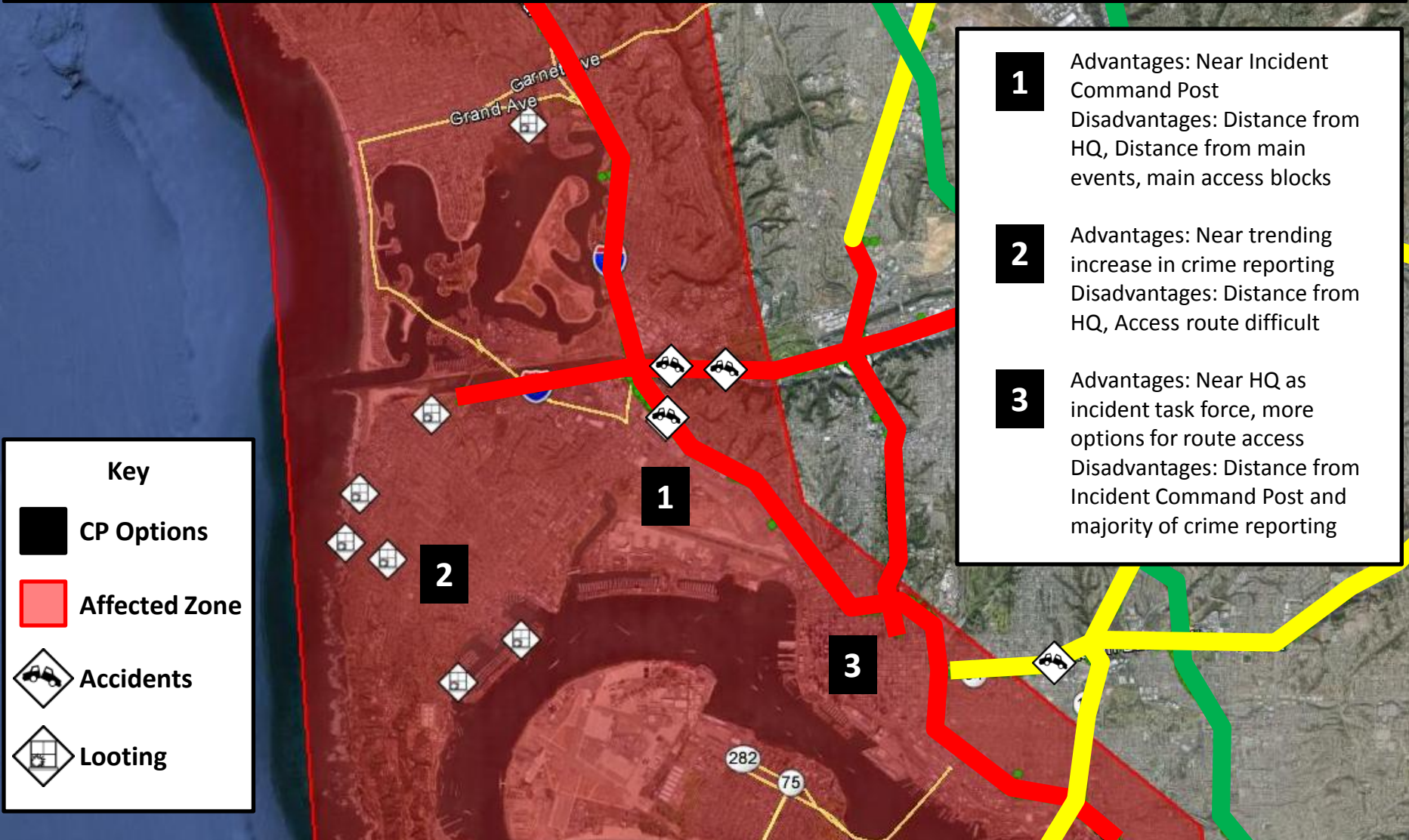
## EXERCISE Tsunami Event Law Enforcement Geospatial Information EXERCISE

Date of product: Event +2 hours

Location: West San Diego County, CA

Sources: Fictionalized reporting that would be represented in event

EXERCISE // UNCLASSIFIED // EXERCISE



EXERCISE // UNCLASSIFIED // EXERCISE

# Local Government

- Special event planning
- [Incident command post siting](#)
- Major storm event
- Major fire event





# Command Post Placement Options

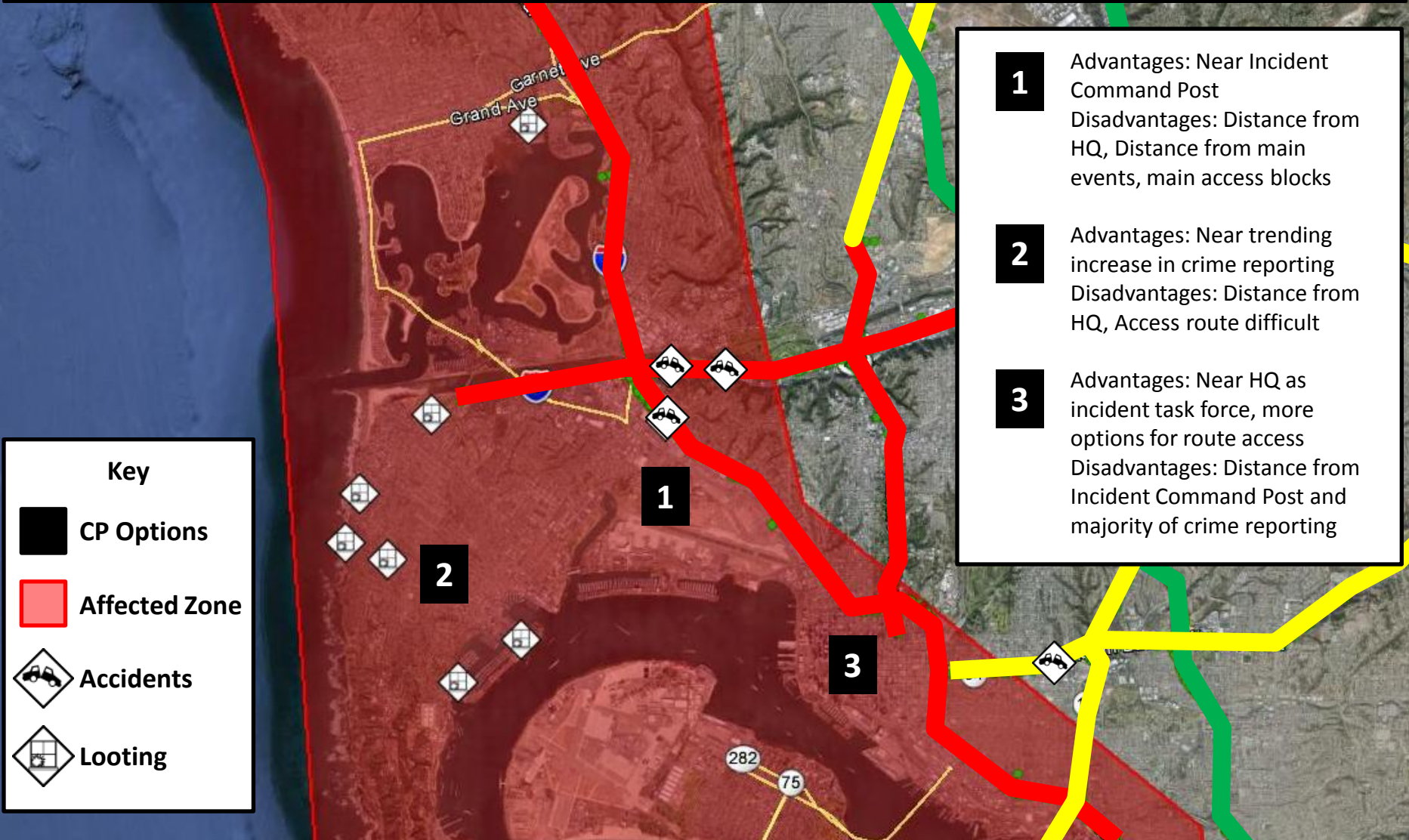
## EXERCISE Tsunami Event Law Enforcement Geospatial Information EXERCISE

Date of product: Event +2 hours

Location: West San Diego County, CA

Sources: Fictionalized reporting that would be represented in event

EXERCISE // UNCLASSIFIED // EXERCISE



**1** Advantages: Near Incident Command Post  
Disadvantages: Distance from HQ, Distance from main events, main access blocks

**2** Advantages: Near trending increase in crime reporting  
Disadvantages: Distance from HQ, Access route difficult

**3** Advantages: Near HQ as incident task force, more options for route access  
Disadvantages: Distance from Incident Command Post and majority of crime reporting

**Key**

- CP Options
- Affected Zone
- Accidents
- Looting



# Operation Gen Overlay

## EXERCISE Access point overview EXERCISE

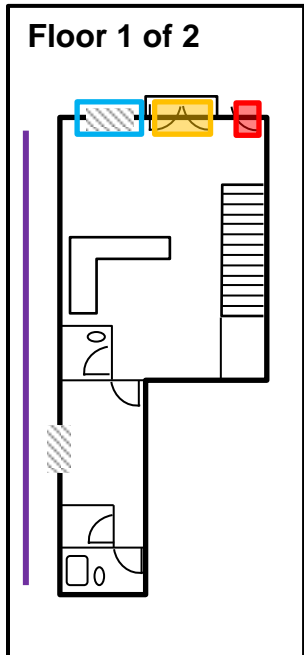
Date of product: Mission -36 hours

Location: Central San Diego County, CA

Sources: Fictionalized law enforcement geospatial support

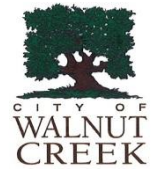
- Facility entry available on two sides
- Windows are within 3 feet of ground access
- Apartment complex in conflict area between Gang Y and Gang Z

EXT00A1	ADDRESS	1200 JOHNSON ST		EXT00A1
	BUSINESS NAME	BLUVILLE APARTMENT COMPLEX	OVERVIEW	PHONE NO 619-135-2468
	BUSINESS TYPE	MULTI-FAMILY HOME	1 inch = 60 feet	LAST UPDATE 7/30/2013
			BUILDING ID	MAP PAGE 173a
				Page 2 of 2



# Local Government Resiliency Spatial Take-Aways

- Develop data that can be re-purposed
- Participate in collaborative efforts
- Use tools/data as often as possible
- Multi-disciplinary approach much better
- Involve your GIS person in Emergency Preparedness Strategy Efforts



# Local Government Perspectives

17 April 2014 Emergency Response Spatial Tools Technical Interchange

Phil Beilin

[Pbeilin@walnut-creek.org](mailto:Pbeilin@walnut-creek.org)

Khin Chin

[Kchin@ci.berkeley.ca.us](mailto:Kchin@ci.berkeley.ca.us)