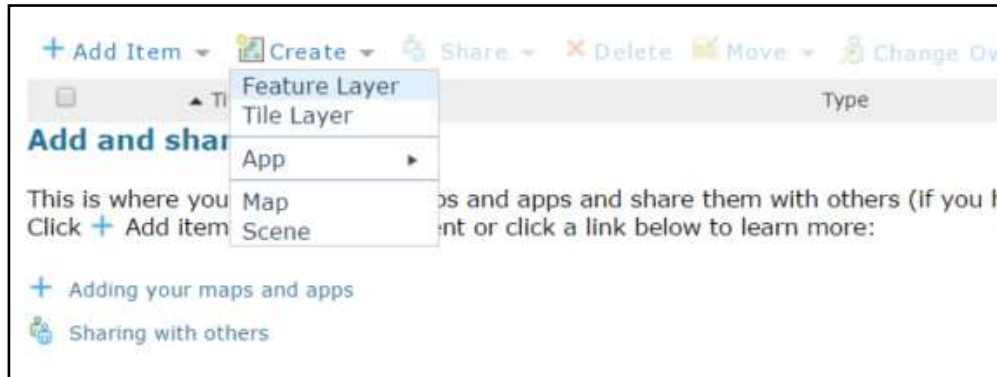

Work Group 1 – Event Prep

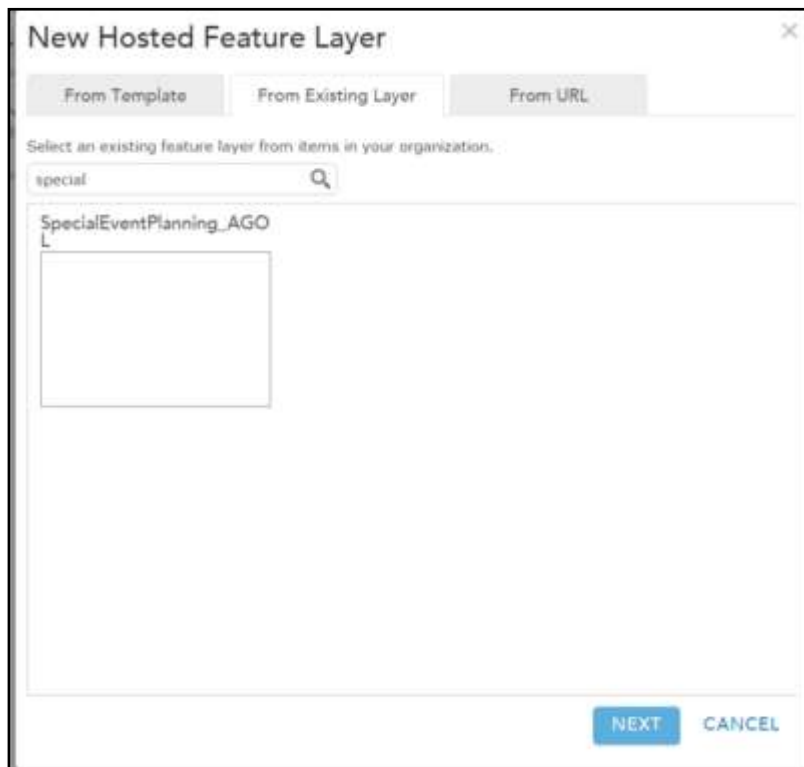
- **Create special event service from template**
 - **Share event service with special event group**
- **Create event webmap**
- **Design event area, route, and POI**
- **Add in Vendor map from Group 4**
- **Create app and share event info with the public**

Create a FeatureService from an Existing Template

From My Content, create a new feature Layer.



Search for “special” to find the existing FeatureService.



Select Next.

New Hosted Feature Layer

Create a new, empty feature layer. A feature layer lets you

Select the layers to include. Click a layer name to edit it.

- Special Event Point
- Special Event Line
- Special Event Area
- Special Event

Select Next.

Select map extent (optional).

New Hosted Feature Layer

Pan and zoom this map to set the map extent for the new hosted layer.

Left: Right:

Top: Bottom:

Name the new FeatureService (use your own unique name).

New Hosted Feature Layer ✕

Specify a title, tags, and summary for the new hosted layer.


Title:

Tags:
Add tag(s)

Summary:

Below is the item details page for the FeatureService.

My Superbowl service



The Special Event Planning Map organizes special event planning and resource assignment data.

📍 Feature Layer (Hosted) by jpedder_napsg

Source: Feature Service

Last Modified: July 30, 2015

★ ★ ★ ★ ★ (0 ratings, 0 views)

f Facebook
🐦 Twitter

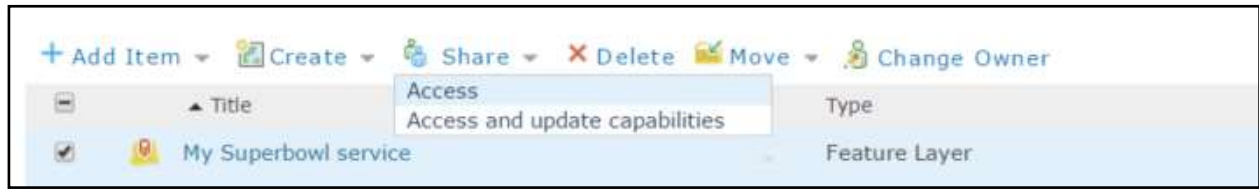
OPEN ▾
👤 SHARE
✍ EDIT
✕ DELETE
📄 PUBLISH
📁 MOVE ▾
👤 C

Description

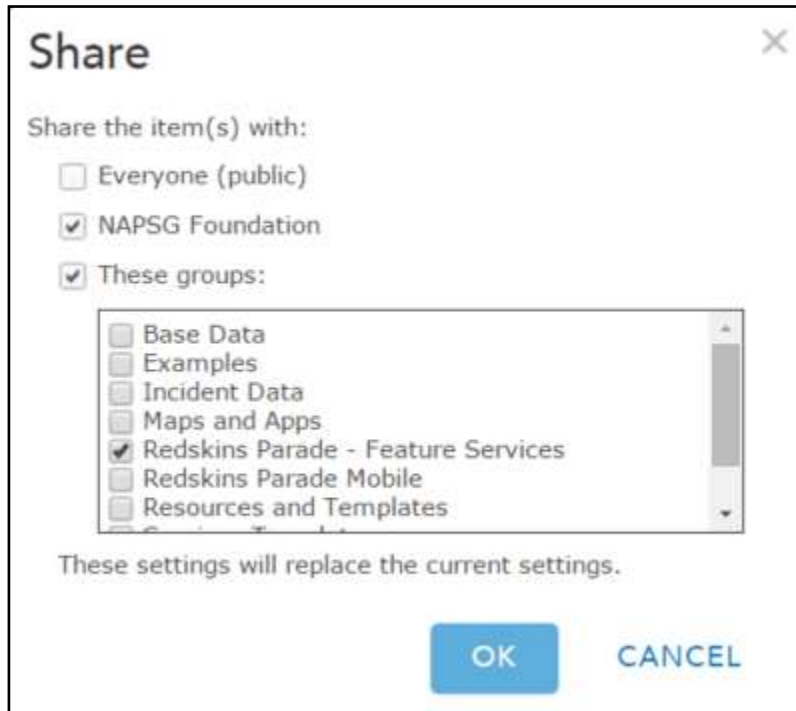
Layers

- Special Event Point ▾
- Special Event Line ▾
- Special Event Area ▾
- Special Event ▾

Share the FeatureService with Groups

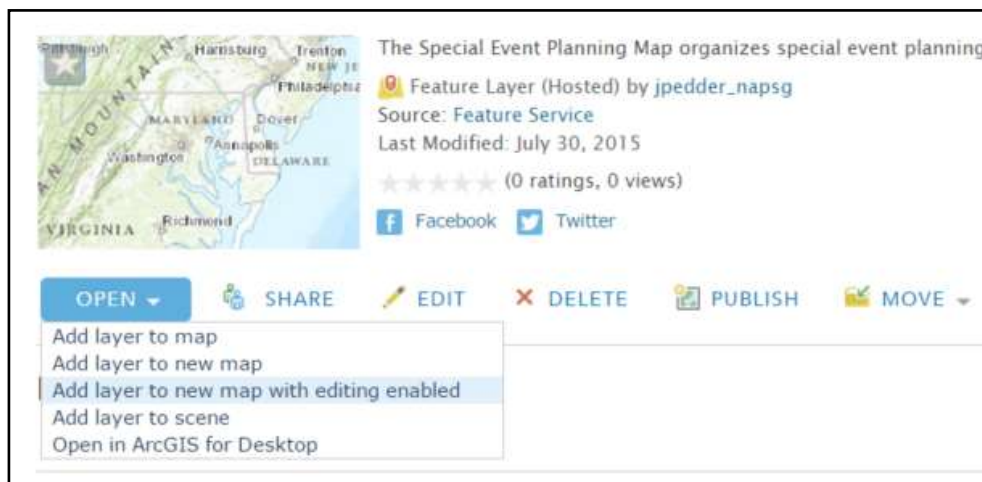


Select NAPSG Org and The Feature services group.

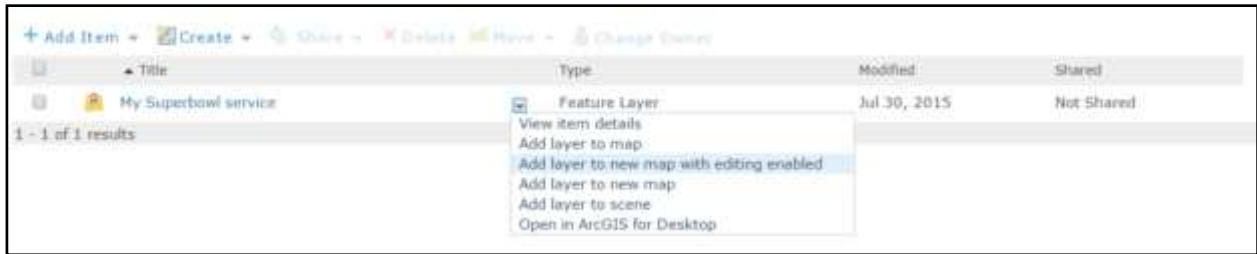


Add the FeatureService to a Web Map

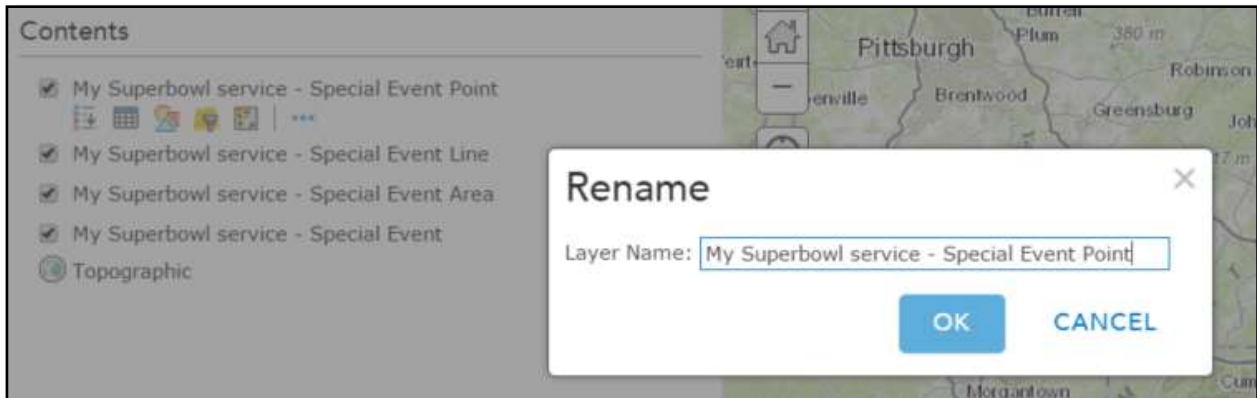
From the FeatureService details page, select *Add layer to new map with editing enabled*.



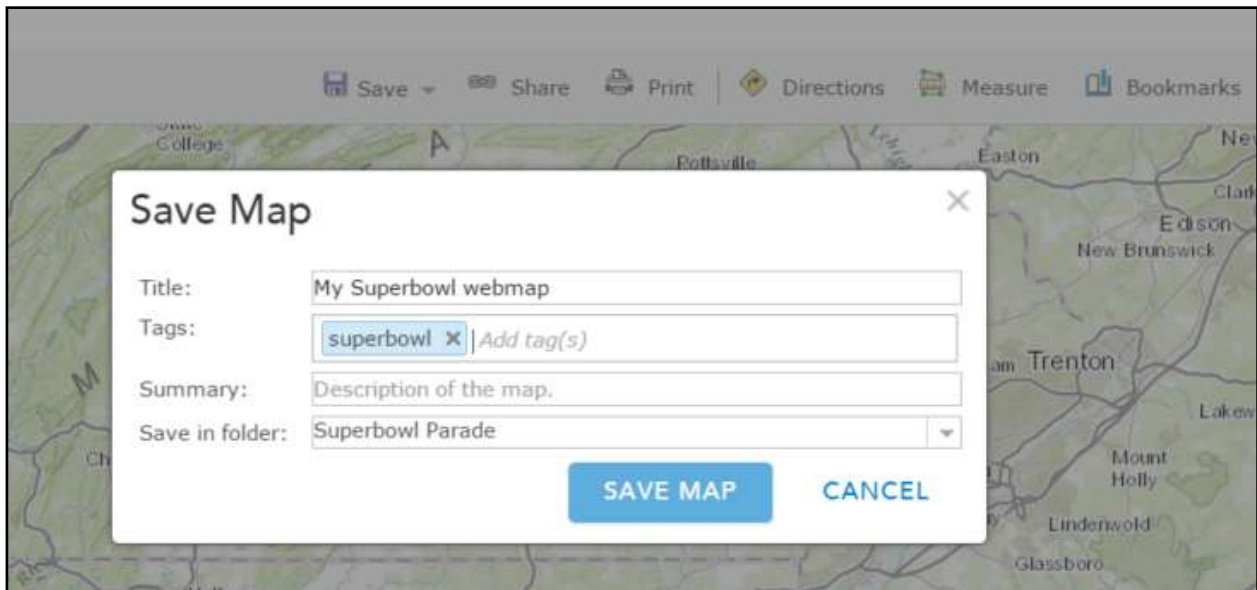
From My Content, select *Add layer to new map with editing enabled*.



Best practice: Rename the layers once they are added to a web map.



Save the web map.



When Group 4 is ready, add their FeatureService to your map.