

# 2016 National Geospatial Preparedness Summit

September 13-14, 2016

[www.napsgfoundation.org](http://www.napsgfoundation.org) | @napsgfoundation

# Why are we here?

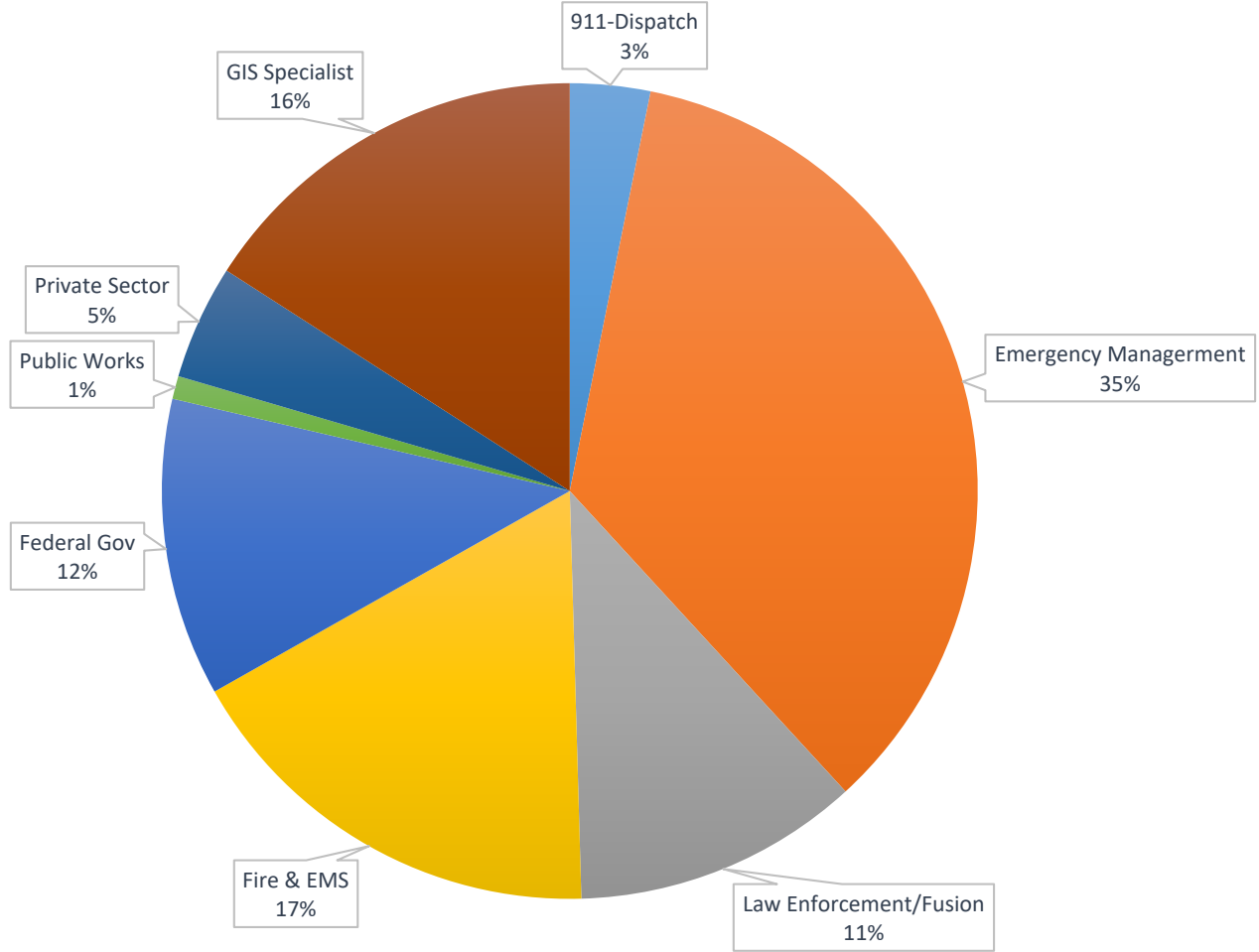
To prepare ourselves and our agencies with knowledge and skills in:

- Understanding what information (and data) are needed to make effective decisions
- Developing products that fulfill mission critical information requirement
- Exercising and validating our capabilities
- Identifying gaps in our capabilities, areas for improvement, and potential solution sets

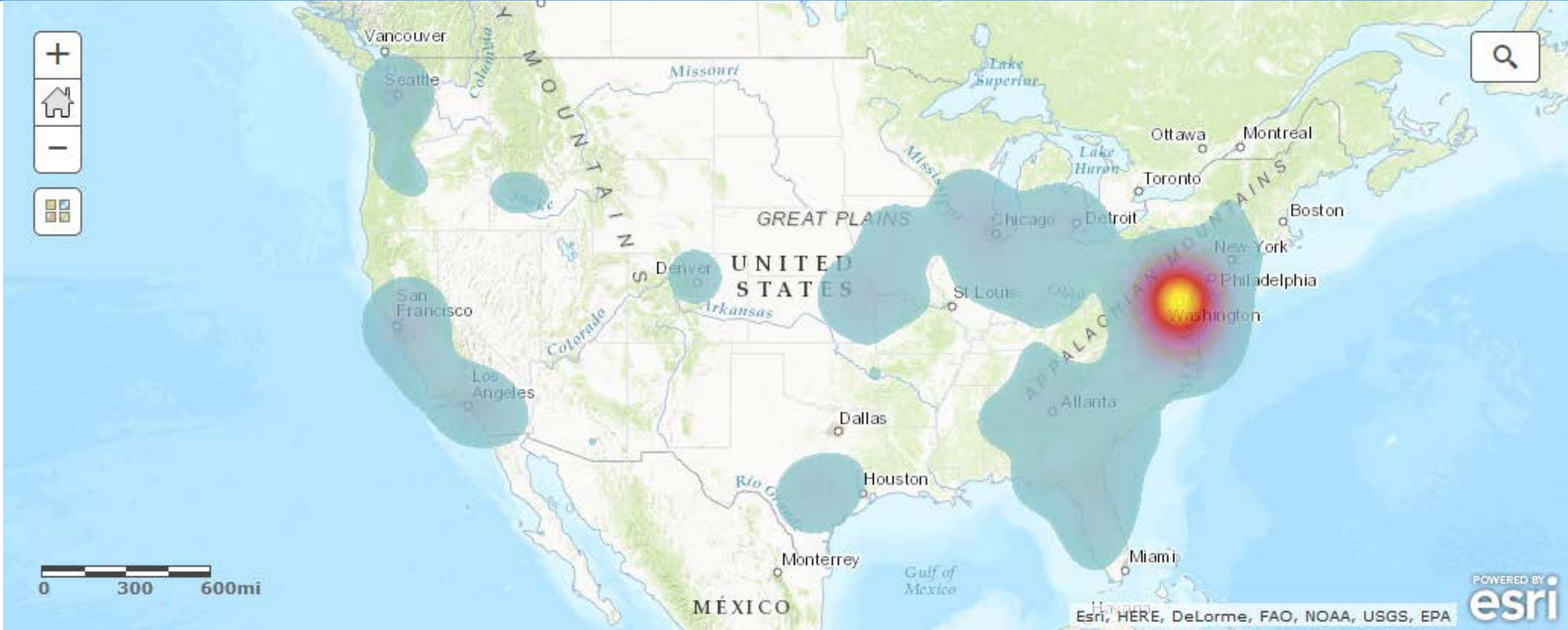


# Who is here today?

NGPS Participants by Discipline



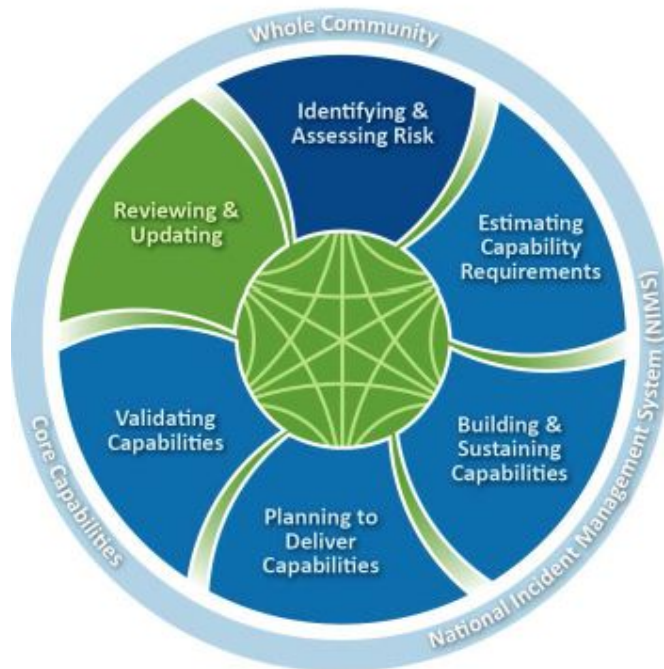
# Where are we from?





# What are the outcomes?

- Gained knowledge and skills that increase our agency's preparedness
- Built a stronger network of colleagues around the nation, and shared lessons learned
- Bridged the communications gap between public safety leaders and GIS professionals
- Identified and explored potential solution sets that fill gaps



# Location-Enabled Analytics for Preparedness

Honorable Alice Hill  
National Security Council  
Keynote Address  
September 13, 2016

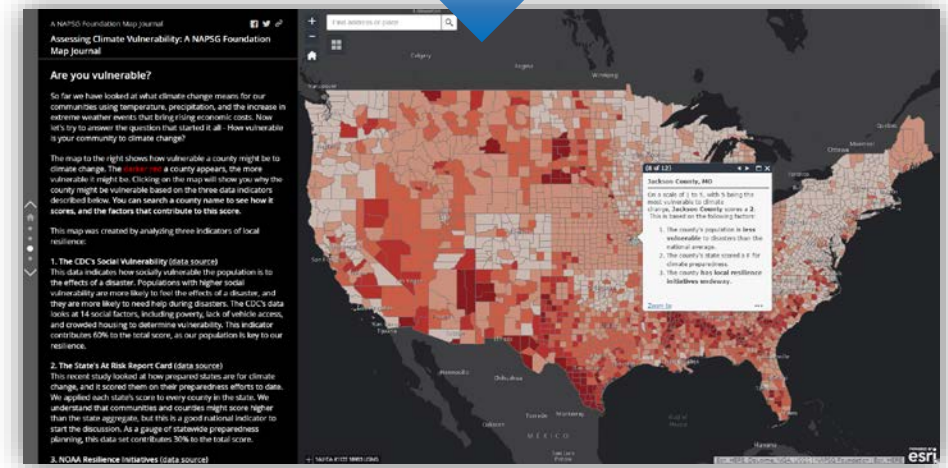
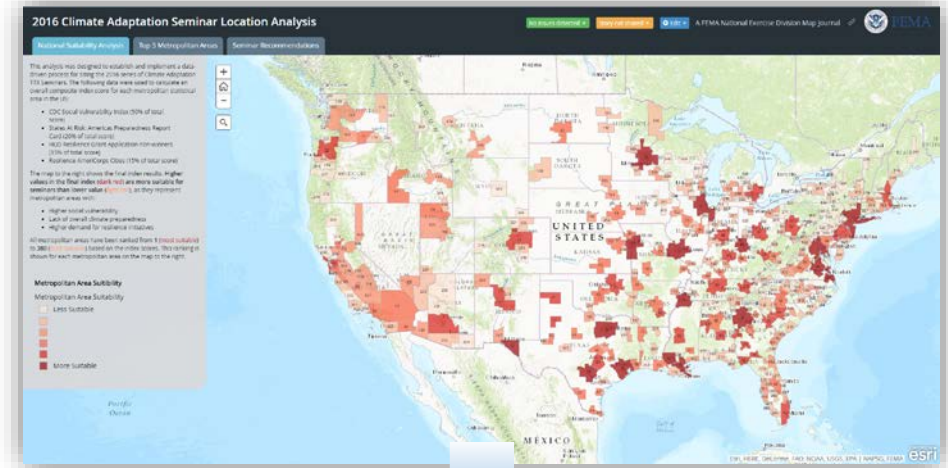
# Data Informed Decision Making (Climate Preparedness)

## Climate Adaptation, Preparedness, and Resilience Tools

- **Data-driven collaborative** National Security Council, federal agency, and academia **partnership**
- Developed to focus existing and emerging tools in support of local and regional climate adaptation efforts across the Nation

## Purpose of a GIS Decision Support Tool

- **Augment complex science** from the National Climate Assessment **to focus action and build resilience**
- **Visualize possible effects** of a changing climate and **identify vulnerabilities** at local and regional levels
- Support and focus **community-lead efforts to build, evolve, and sustain resilience**





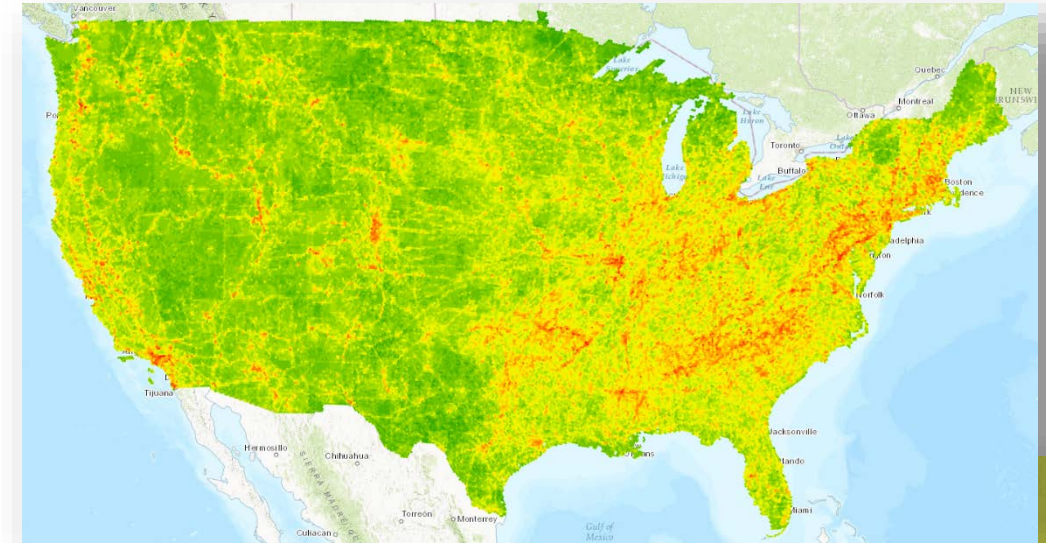
# Promoting Collaboration and Visualization To Enhance Whole Community Preparedness (All Hazards)

## All-Hazards Preparedness and Resilience

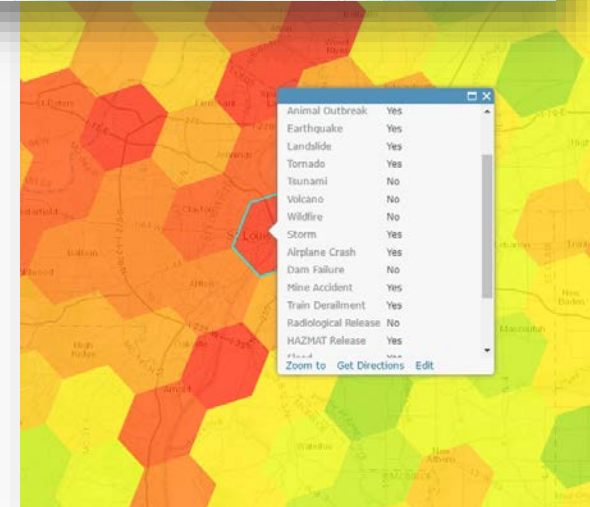
- Data, analytics, and GIS *together* better support preparedness and *building community-level resilience*
- *Location-enabled analytics* helps the whole community gain a *shared understanding* of potential vulnerabilities

## Purpose of GIS Decision Support Tools

- Simple tools to guide a variety of users through location-enabled analytics aligned with CPG-201: Threat Hazard Identification and Risk Assessment (THIRA)
- Use authoritative national data sets to identify risks and potential vulnerabilities in context – who, what, and where
- Supports preparedness across the entire spectrum from planning and exercises to managing disaster operations and focuses efforts



National-Level Hazard Exposure Map





# Integration Of Location-enabled Analytics (GIS)

- Preparedness and public safety partners across the Nation:
  - need *relevant information*
  - *in context* to them and their communities
  - *at a personal level*
  - to *make data ACTIONABLE* and
  - *Decisions UNIFIED*

