

A State Perspective: GIS in Emergency Management

NAPSG SAR Workshop

Reston, VA

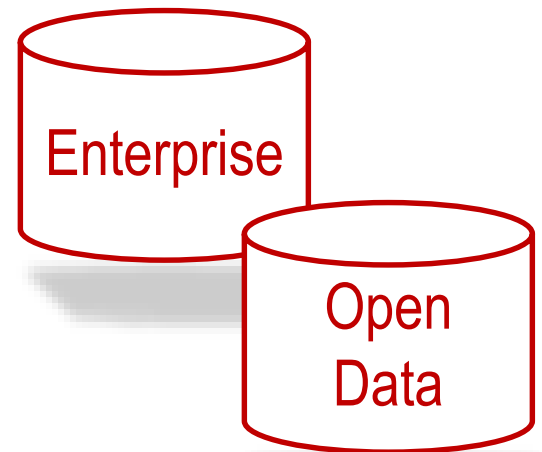
November 14, 2016

MD Geographic Information Office (GIO)

Who We Are

- State of Maryland, Department of Information Technology
- 9 Full-Time Employees, Including Contractors
- 2 Full-Time Staff Assigned to Maryland Emergency Management Agency (MEMA)

Mission: To improve the quality of GIS services through collective investment and effective application of data and systems. Reach beyond government by making data freely and public available in consideration of privacy and security.



MD Geographic Information Office (GIO)

What We Offer

- MD iMAP Platform – <http://imap.maryland.gov>



- ✓ Service Status Dashboard
- ✓ Data Resource Links
- ✓ Map & Dashboard Galleries
- ✓ GIO Office News and Alerts
- ✓ Initiatives
- ✓ Support
- ✓ Partners

MD Geographic Information Office (GIO)

What We Offer

- GIS Software Enterprise Licenses



MD Emergency Management Agency (MEMA)

What We Offer

- OSPREY – **O**perational and **S**ituational **P**reparedness for **R**esponding to an **E**mergency
- ✓ Situational Awareness Platform
- ✓ Managed at MEMA by GIO Staff
- ✓ 2 Full-Time GIS Staff
- ✓ Multiple Sources of Data
- ✓ Real-Time, Authoritative Data



MD Emergency Management Agency (MEMA)

What We Offer

- OSPREY for the Public

<http://mema.maryland.gov/Pages/OSPREYlanding.aspx>

AVAILABLE PRODUCTS:

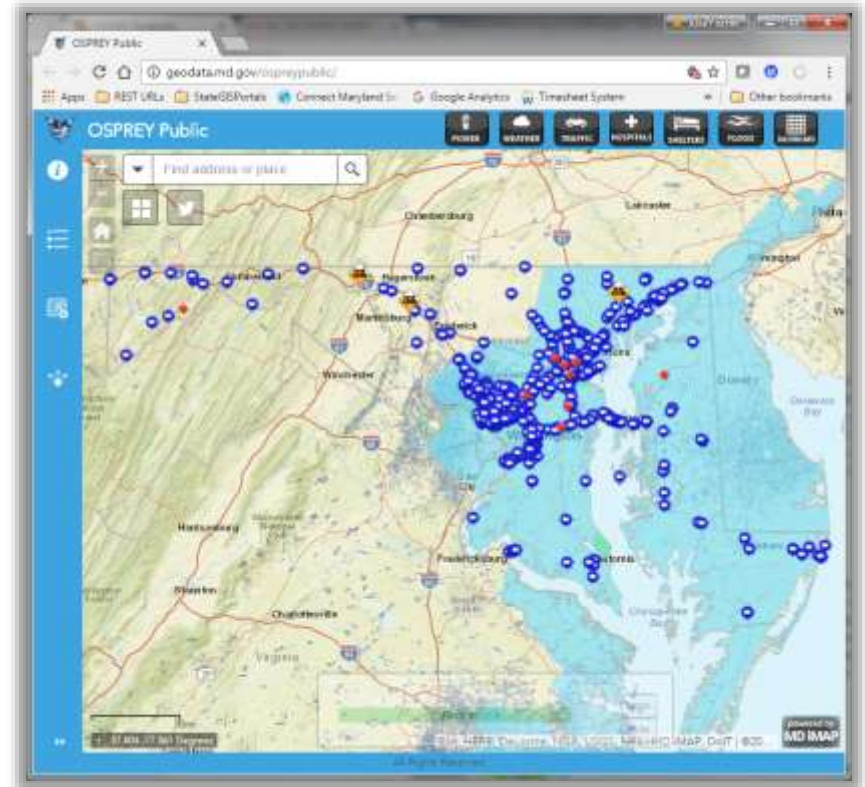
- ✓ Public
- ✓ Dashboard Public
- ✓ Power Outages
- ✓ Flood Zone Look-Up



MD Emergency Management Agency (MEMA)

What We Offer

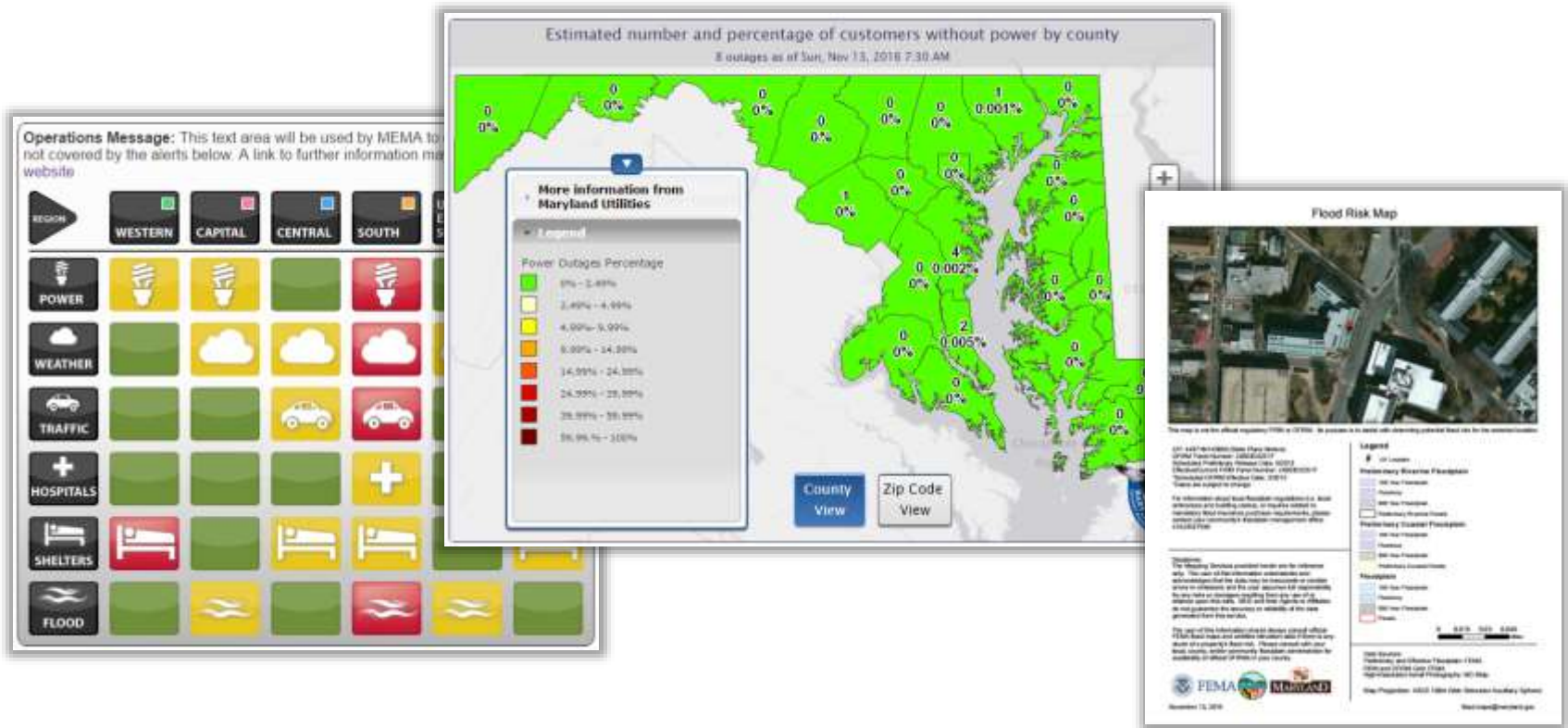
- OSPREY Public
- ✓ Traffic Cameras
- ✓ Road Closures
- ✓ Weather Conditions
- ✓ Power Outages
- ✓ Flood Concerns
- ✓ Hospitals & Shelters
- ✓ Share Tool
- ✓ Weather Loop



MD Emergency Management Agency (MEMA)

What We Offer

- Dashboard Public, Power Outages and Flood Zone Look-Up



MD Emergency Management Agency (MEMA)

What We Offer

- OSPREY for First Responders and Emergency Managers
<http://mema.maryland.gov/Pages/OSPREYsecure.aspx>

AVAILABLE PRODUCTS:

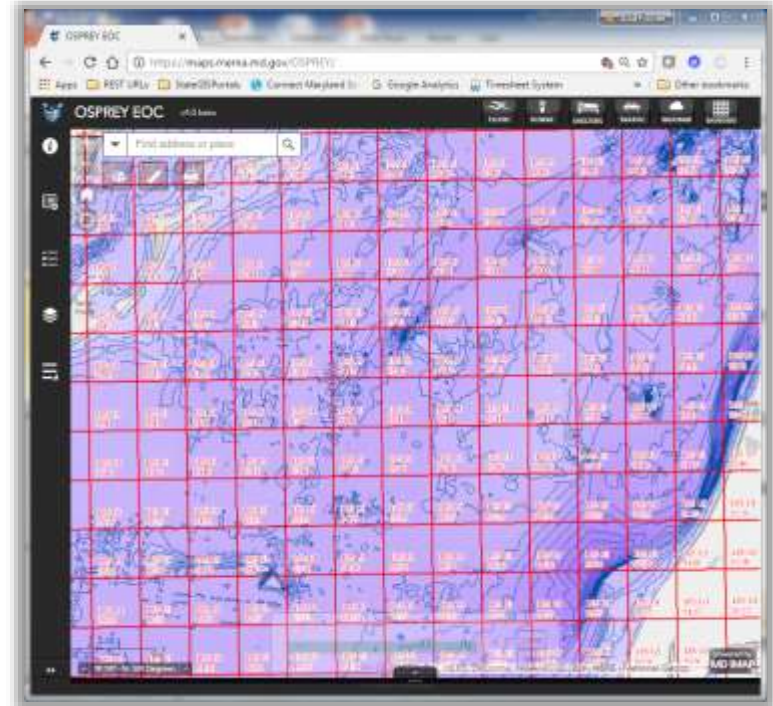
- ✓ EOC
- ✓ WebEOC
- ✓ Dashboard EOC
- ✓ MD Geo Share
- ✓ NCR GDX
- ✓ MView CCTV Portal
- ✓ Ritis Traffic View
- ✓ HC Standard



MD Emergency Management Agency (MEMA)

What We Offer

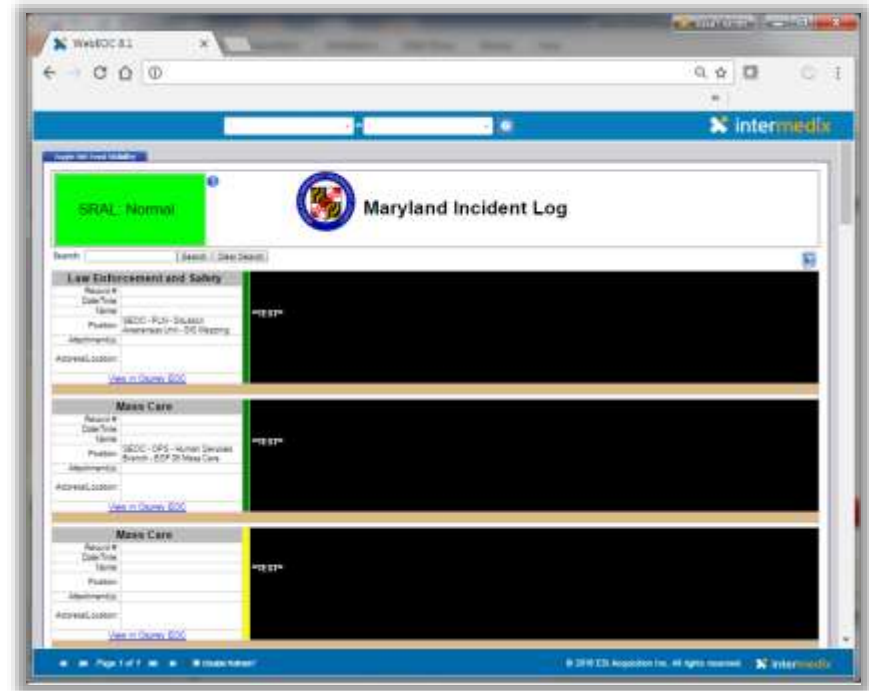
- OSPREY EOC
- ✓ Common Operating Picture
- ✓ Real-Time Data Feeds
- ✓ Integrated With WebEOC
- ✓ Print, Measure, Draw Tools
- ✓ Mobile Compatible
- ✓ Disconnected Environment
- ✓ Add HiFLD and MD iMAP Data On the Fly
- ✓ Account Required



MD Emergency Management Agency (MEMA)

What We Offer

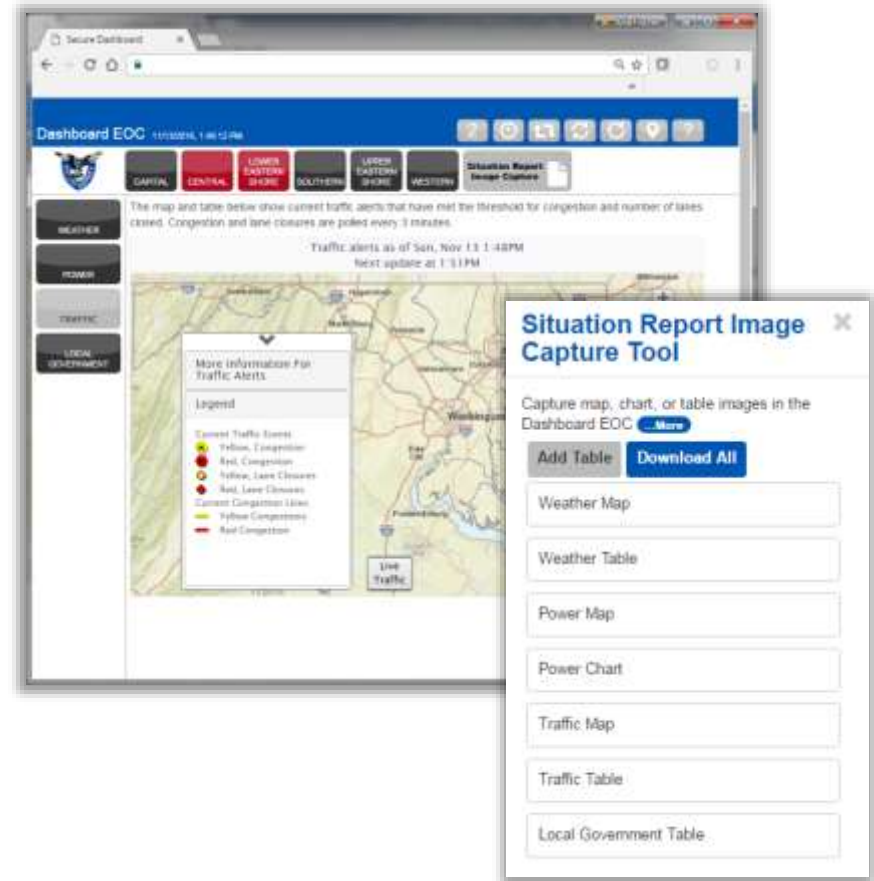
- WebEOC
- ✓ Incident Management
- ✓ Operated Out of SEOC
- ✓ Collaborative Platform
- ✓ Used by Multiple Local Governments
- ✓ Integrated With OSPREY
- ✓ Account Required



MD Emergency Management Agency (MEMA)

What We Offer

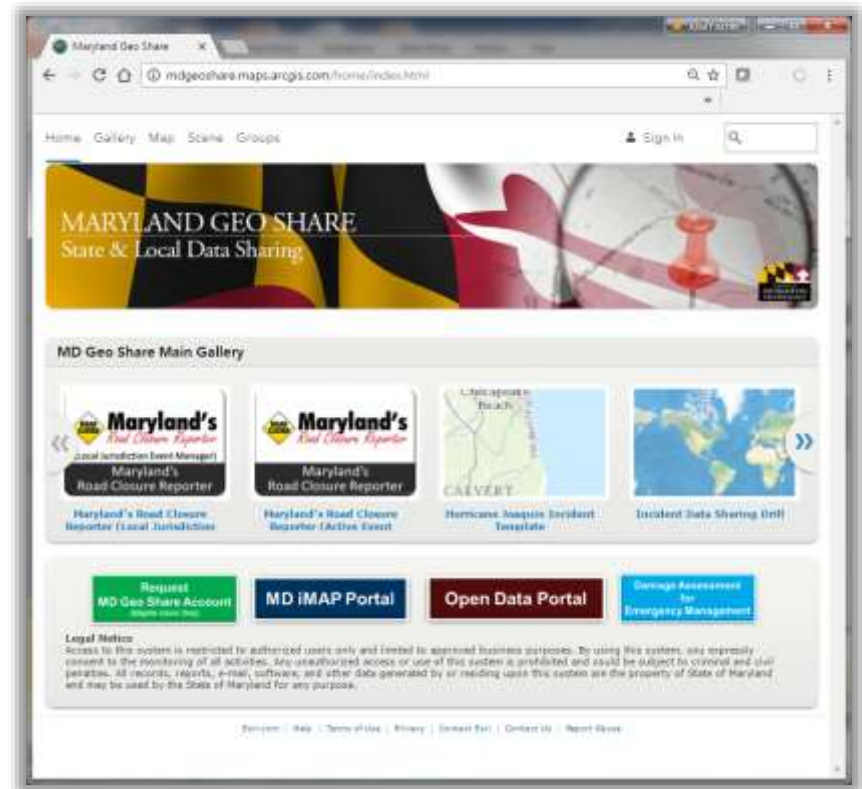
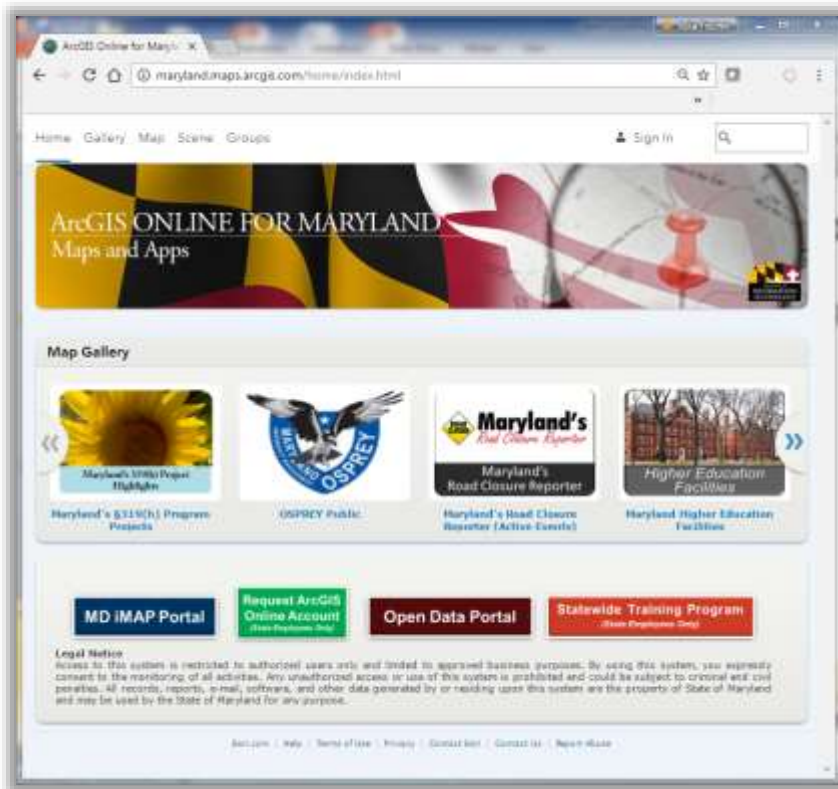
- Dashboard EOC
- ✓ Quick Situational View
- ✓ Review Historic Data
- ✓ Maps, Graphs and Tables
- ✓ Image and Tabular Data Capture for Reports
- ✓ Account Required



MD Geographic Information Office (GIO)

What We Offer

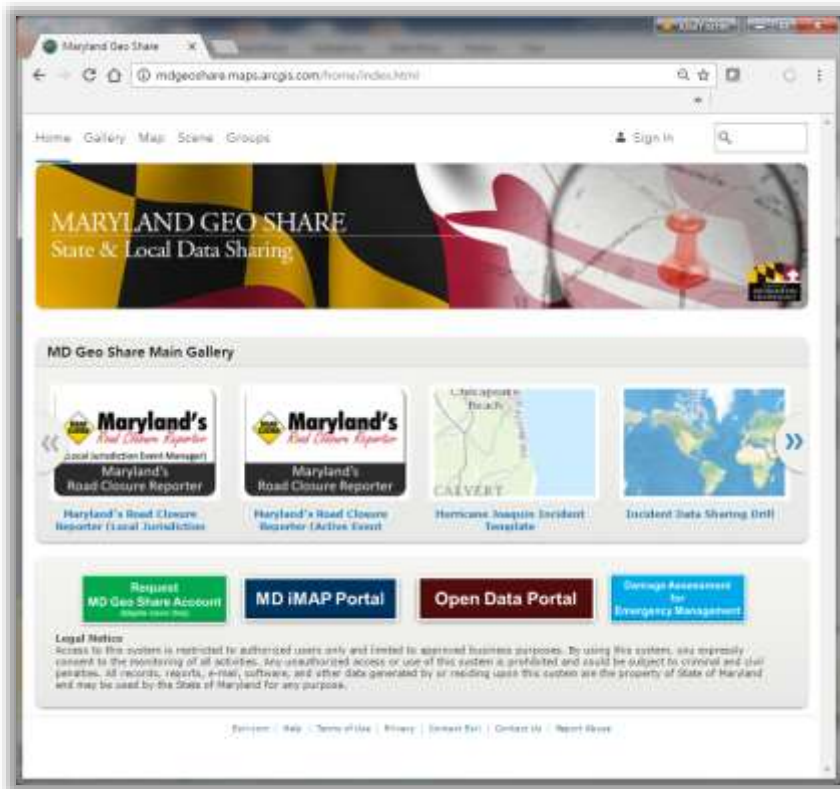
- State of Maryland AGOL Organizations



MD Geographic Information Office (GIO)

What We Offer

- MD Geo Share

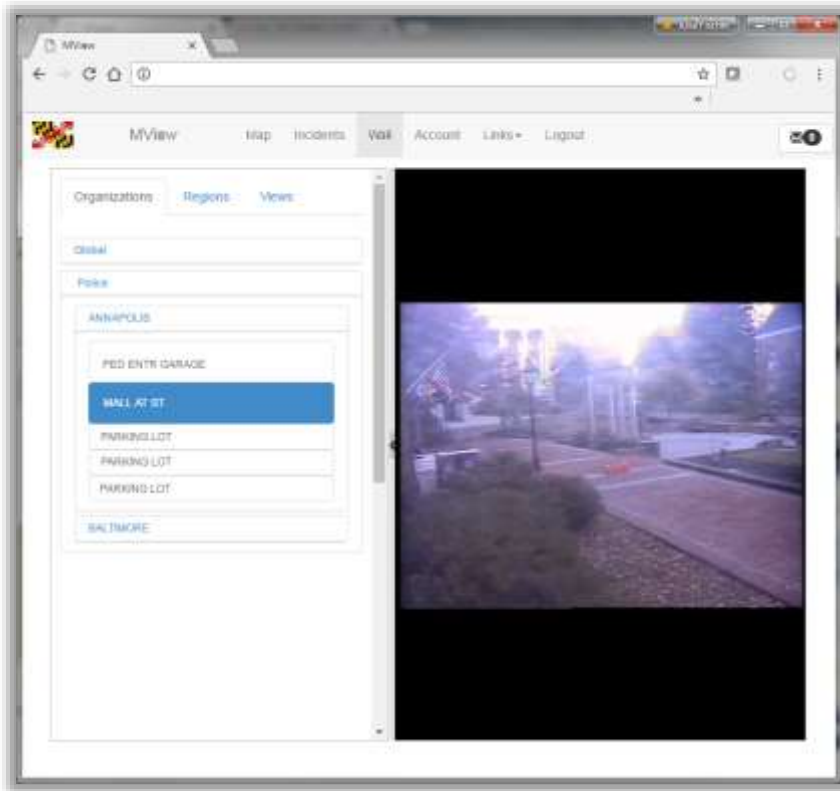


- ✓ Collaborative Platform
- ✓ Share Data During Emergencies
- ✓ Local, Regional, State and University Partners
- ✓ Damage Collection Tools
- ✓ Account Required

MD Emergency Management Agency (MEMA)

What We Offer

- MView CCTV Portal

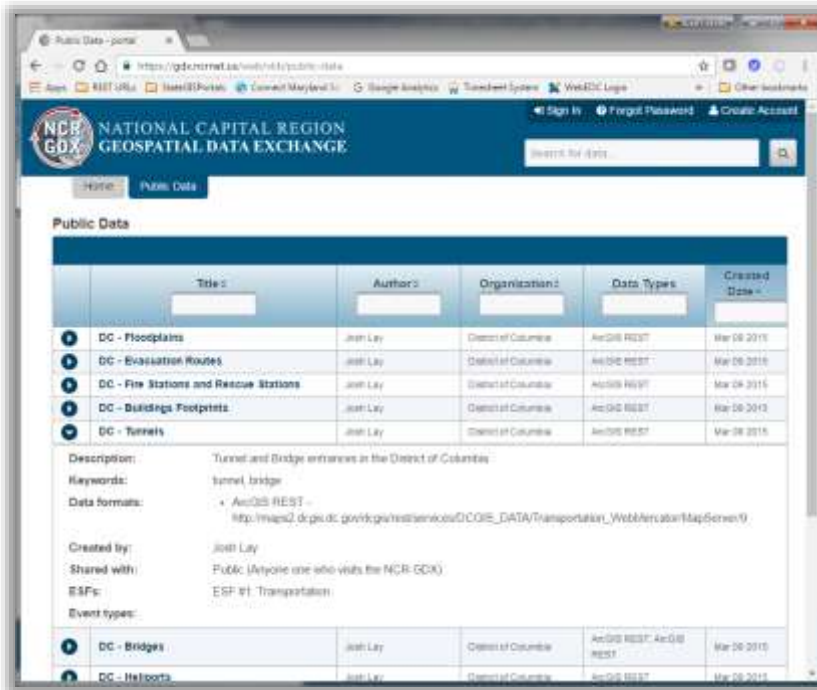


- ✓ CCTV Camera Feeds From Organizations in MD and Capital Region
- ✓ 3,300+ Cameras to Date
- ✓ Account Required

Regional Partnerships and Universities

What We Offer

- NCR GDX and Ritis Traffic View



The screenshot shows the National Capital Region Geospatial Data Exchange (NCR GDX) website. The header includes the NCR GDX logo and the text "NATIONAL CAPITAL REGION GEOSPATIAL DATA EXCHANGE". Below the header is a search bar and navigation tabs for "Home" and "Public Data". The main content area is titled "Public Data" and features a table with columns for "Title", "Author", "Organization", "Data Types", and "Created Date".

| | Title | Author | Organization | Data Types | Created Date |
|---|--|----------|----------------------|-------------|--------------|
| 1 | DC - Floodplains | Josh Lay | District of Columbia | ArcGIS REST | Mar 08 2015 |
| 2 | DC - Evacuation Routes | Josh Lay | District of Columbia | ArcGIS REST | Mar 08 2015 |
| 3 | DC - Fire Stations and Rescue Stations | Josh Lay | District of Columbia | ArcGIS REST | Mar 04 2015 |
| 4 | DC - Buildings Footprints | Josh Lay | District of Columbia | ArcGIS REST | Mar 08 2015 |
| 5 | DC - Tunnels | Josh Lay | District of Columbia | ArcGIS REST | Mar 08 2015 |

Below the table, there is a description for the selected item: "Tunnel and Bridge entrances in the District of Columbia". It includes keywords like "tunnel, bridge" and data format information: "ArcGIS REST" and "http://maps2.dcgisdc.gov/arcgis/rest/services/DCGIE_DATA/Transportation_WorldMap/MapServer/0".

| | | | | | |
|---|-----------------|----------|----------------------|--------------------------|-------------|
| 6 | DC - Bridges | Josh Lay | District of Columbia | ArcGIS REST, ArcGIS REST | Mar 08 2015 |
| 7 | DC - The Floods | Josh Lay | District of Columbia | ArcGIS REST | Mar 08 2015 |

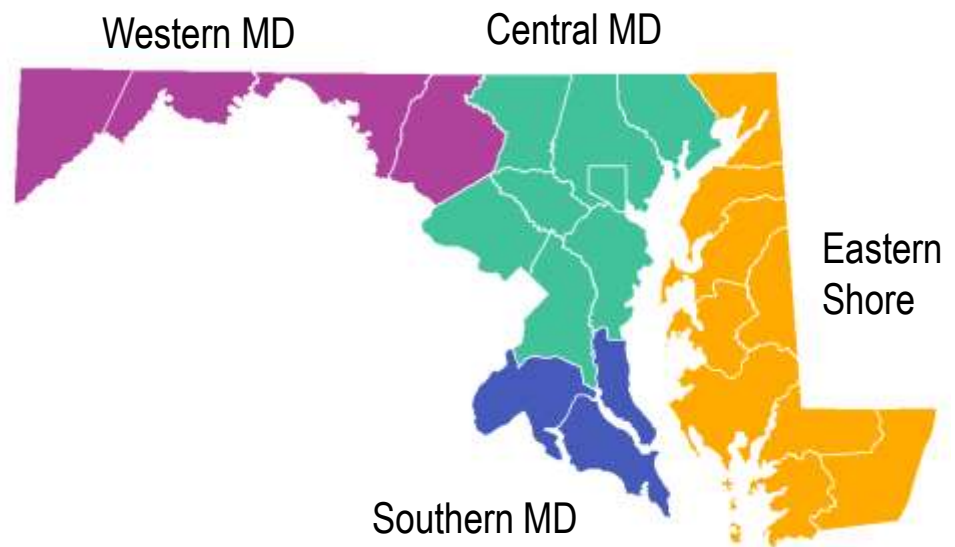


The screenshot shows the Ritis Traffic View website. The header includes the "Traffic View" logo and navigation tabs for "Live Traffic", "My Routes", and "Camera List". The main content area is a live traffic map of the Washington D.C. area, showing major roads and traffic conditions. The map is color-coded by traffic status, with green for clear, yellow for slow, and red for heavy traffic. A legend on the right side of the map provides details on "Live Accidents and Events", "Severity", "Standard Signs", "Traffic Cameras", "Congestion", "Weather Radar", and "Weather Alerts".

MD Geographic Information Office (GIO)

What We Offer

- Partnerships within the GIS Community
- ✓ 37 State Agencies
 - State Police
 - Army National Guard
 - MCAC
 - MIEMSS
 - GOCCP
- ✓ On-Site MEMA Support
- ✓ PSAPs and Emergency Managers For All Counties



State of Maryland

What We Offer

- Maryland's Open Data Act
- ✓ Signed Into Law in 2014
- ✓ Statutes of Law:
 - Establish Council on Open Data
 - Establish Open Data Policies
 - Create & Manage Portals for Open Data Sharing
 - "Data" Encompasses Spatial & Non-Spatial Data

State of Maryland

What We Offer

- Maryland's Council on Open Data
<http://doit.maryland.gov/opendatacouncil>
- ✓ Members: Chair, Vice Chair, 2 Legislators, 23 Cabinet Secretaries and 10 Appointees from the Open Data Community
- ✓ Staffed by GIO Office

State of Maryland

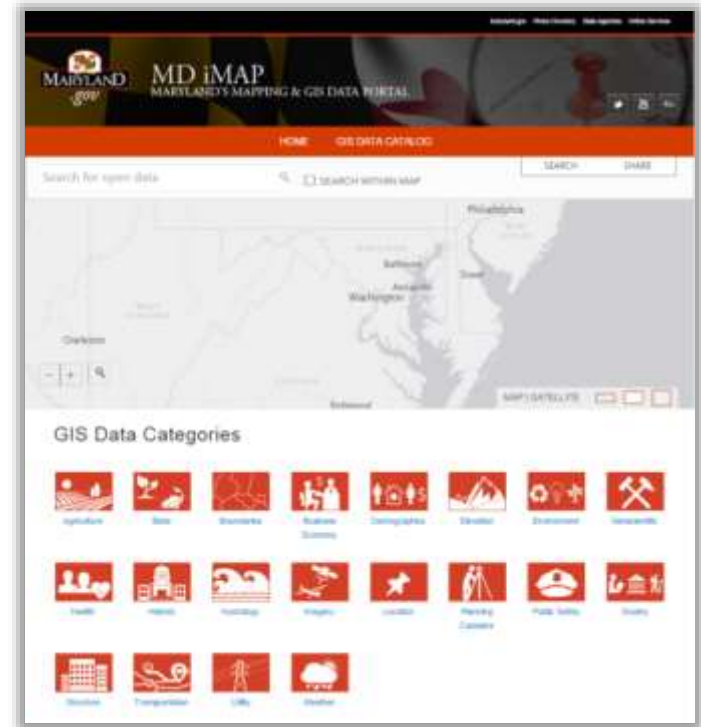
What We Offer

- Maryland's Council on Open Data Current Initiatives
- ✓ Improve Open Data Portals Data and Framework Solutions
- ✓ Make Address Points and LiDAR Available to the Public
- ✓ Dashboard Development:
 - Help Citizens Analyze Crime Data
 - Help Citizens Explore Maryland's Operating Budget

MD Geographic Information Office (GIO)

What We Offer

- GIS Data Catalog
<http://data.imap.maryland.gov>
- ✓ ArcGIS Open Data Platform
- ✓ Integrates With ArcGIS Tools
- ✓ Authoritative Spatial Data
- ✓ Maps and Tables
- ✓ 650+ Data Layers / Services
- ✓ Downloadable (Excel, Shapefile, KML, GeoJSON, WMS)



MD Geographic Information Office (GIO)

What We Offer

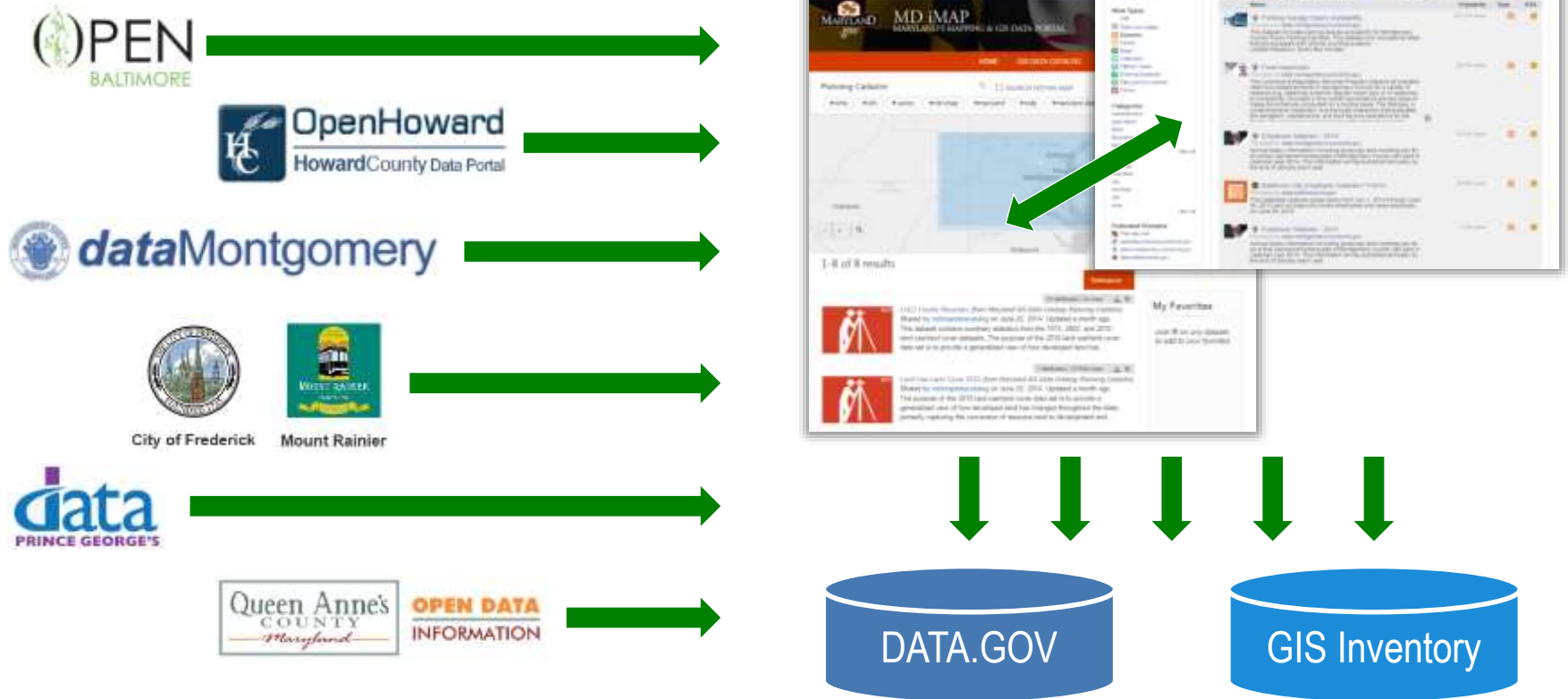
- Open Data Portal
<http://data.maryland.gov>
- ✓ Socrata Cloud Platform
- ✓ Authoritative Non-Spatial Data
- ✓ Maps, Graphs and Tables
- ✓ Print and Embed Tools
- ✓ 1,500+ Data Layers / Services
- ✓ Downloadable (CSV, JSON, RDF, RSS, XML)



MD Geographic Information Office (GIO)

What We Offer

- Data Sharing / Data Federation



MD Geographic Information Office (GIO)

What We Offer

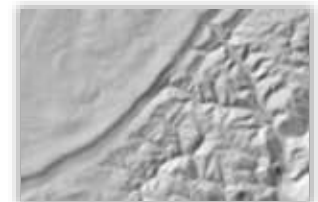
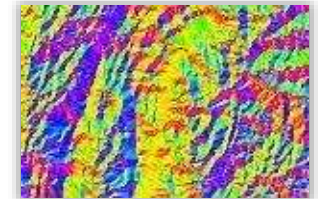
- Statewide Imagery Collection Program
<http://imap.maryland.gov/Pages/imagery.aspx>
- ✓ Six Inch High Resolution Imagery
 - Some Three Inch High Resolution Imagery
- ✓ Managed by GIO on Behalf of
 - MD Emergency Number Systems Board
 - Local PSAPs
- ✓ Searchable (Current and Historic)
- ✓ Downloadable (JPEG, TIFF, GIF, BMP)



MD Geographic Information Office (GIO)

What We Offer

- Statewide LiDAR Centralization Program
<http://imap.maryland.gov/Pages/lidar.aspx>
- ✓ Collection from 2011 through 2015
- ✓ Managed by GIO Staff and ESRGC Staff
- ✓ Downloadable (DEMs and Upon Request)
 - *Point Cloud Download >>> Arriving in 2017!!!*
- ✓ Derivative Products:
 - DEMs, Slope, Aspect, Hillshade, Shaded Relief



MD Geographic Information Office (GIO)

What We Offer

- Statewide GIS Training Program
<http://imap.maryland.gov/Pages/training.aspx>
- ✓ Step-by-Step Written Instructions
- ✓ Classroom Training for Maryland State Employees
 - Beginner and Intermediate AGOL and Desktop Courses
 - MD iMAP Application and Usage Discussed in Each Course
 - *ArcGIS Pro >>> Arriving in 2017!!!*
- ✓ Online Training – “[Thinking Spatially](#)”

Maintaining A Strong Foundation of GIS in Maryland

How Can We Assist You?

- Always Looking for Feedback
 - [Open Data Portal Survey](#)
 - [Nominate a Dataset](#)
 - Service.Desk@Maryland.Gov



| STAFF | | AGENCIES | REGIONS |
|---------------------|--|----------------------------------|--------------------|
| Julia Fischer (GIO) | | Economic Development & Education | MSGIC, NSGIC |
| Jessie Cahoon | | Application Development | -- |
| Joshua Exler | | Open Data (All Agencies) ✓ | -- |
| Matt Foley | | Health & Human Services | Western MD |
| Tim Hutchison | | Emergency Management ✓ | -- |
| Jeyan Jebaraj | | Transportation | Central MD |
| Lisa Lowe | | Environment & Energy | Southern MD |
| Will Melville | | Emergency Management ✓ | Emergency Managers |
| Matt Sokol | | Law Enforcement | Eastern Shore MD |

Questions?

Julia Fischer

Geographic Information Officer,

Department of Information Technology

julia.fischer@maryland.gov