




Do you even GPS, Bro?

Jared Doke

http://www.responsesystem.org/



National US&R Response System

[Home](#) [Advisory Organization Overview](#) [Current Ad-Hocs](#) [Active Recommendations](#) [Definitions](#) [Task Force Readiness Self Evaluation](#) [US&R System Calendars](#)

[US&R System Resource Library](#)

Introduction

This National Urban Search & Rescue (US&R) Response System (the System) Administration Manual Annex defines the System's Advisory Organization, its members, roles, responsibilities, and provides the policy and procedures by which it will function. The primary purpose of this essential element of the System is to provide advice and recommendations upon which System decisions are based. These decisions will be made through consensus, whenever possible.

Overview

The System is comprised of three Incident Support Teams and 28 task forces, Federally authorized and staffed by members from Sponsoring Agencies, Participating Agencies, and Affiliated Personnel. Organizationally, the System resides within the US&R Branch, a component of the Department of Homeland Security/Federal Emergency Management Agency (DHS/FEMA), Office of Response and Recovery, Response Directorate, Operations Division. The continued growth and development of the System requires the involvement of subject matter experts from the local, State, and Federal levels. This Annex defines the System's Advisory Organization which is designed to support, facilitate, and ensure that involvement.

The Advisory Organization is comprised of three elements; the Strategic Group, the Advisory Group, (comprised of Senior Staff, and four Functional Group Leaders) and the Advisory Support Group (comprised of members of the four Functional Groups, Subgroups, Units, and Ad Hoc Groups). Each Group is responsible for developing and maintaining their respective areas and integrating them into the System. The members of the groups, both System and non-System personnel are chosen based on their management and/or technical expertise to provide advice and recommendations upon which decisions are based. These decisions will be made through consensus, whenever possible.

History

In the years following its inception, the System built an advisory structure, in 1993 convening an Advisory Committee comprised of Sponsoring Agency and Task Force Representatives. Federal advisory committees automatically expire every two years unless the original charter is renewed and the System's Advisory Committee was allowed to expire. The Operations Group and various Work Groups continued to conduct research and make recommendations absent of strategic oversight to the US&R Branch until the current Strategic Group was formed in 2011.

Building upon evaluations of the Katrina response, FEMA and the System re-instated an Advisory Organization to integrate strategic and operational (tactical) input from Sponsoring Agencies and Task Forces. FEMA received guidance and feedback from these stakeholders through an

ADMINISTRATIVE

- [Active Recommendations](#)
- [Recommendation Information](#)
- [US&R Documents & Manuals](#)
- [Program Directives](#)
- [General Memorandums](#)
- [IST Information](#)
- [US&R System Calendars](#)
- [OREEP Toolkit](#)

US&R SYSTEM RESOURCE LIBRARY

FUNCTIONAL GROUPS

- [Operations](#)
- [Planning](#)
- [Logistics](#)
- [Admin / Finance](#)

CURRICULUMS


- [Learning Management System](#)
- [Haz-Mat Specialist 2015](#)
- [Operations in a Contaminated Environment](#)

OPERATIONAL

- [Incident Operations](#)

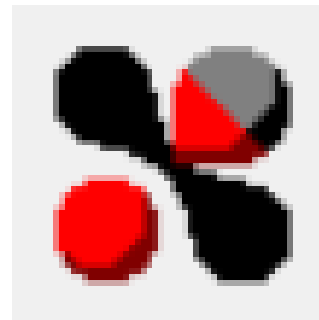
NEW ADDITIONS

- [GPS Information](#)



Computer/GPS Setup

- Basecamp
- Google Earth
- X Image (for Garmin 60 Series)
- GPX2KMZ Converter



Data Collection using Standard Symbols



1 - Structure No Damage



2 - Structure Damaged



3 - Structure Failed



4 - Structure Destroyed



5 - Assisted



6 - Evacuated



7 - Rescued



8 - Follow-Up Form



9 - Victim Detected



10 - Confirmed Victim



11 - Human Remains



12 - Human Remains Removed



13 - Shelter in Place



14 - Animal Issue



15 - Fire Incident



16 - Hazardous Material Incident



17 - Targeted Search



18 - Flood_Water Level



19 - Helicopter Landing Site



20 - Route Blocked



21 - Extra



22 - Extra



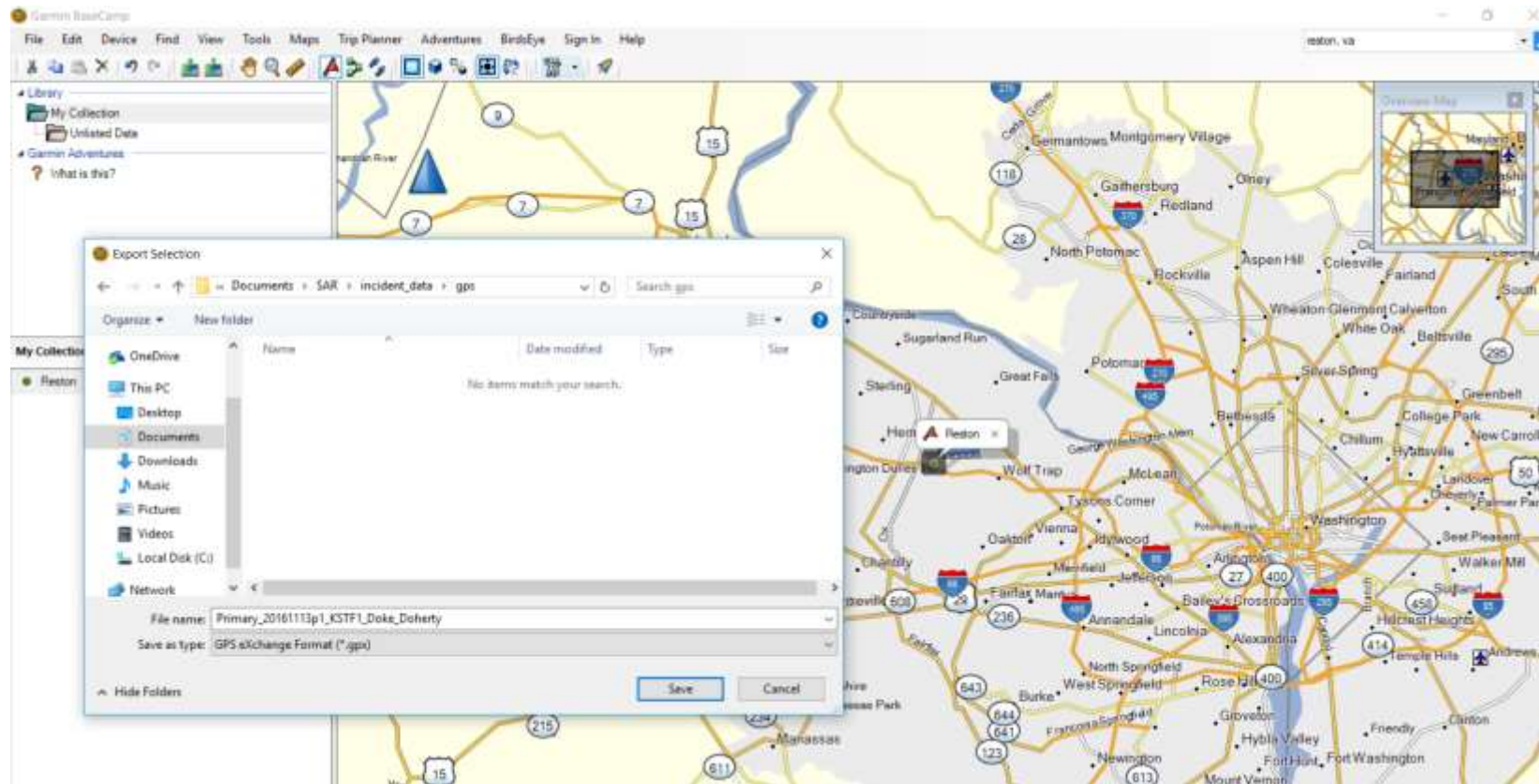
23 - Extra



24 - Extra

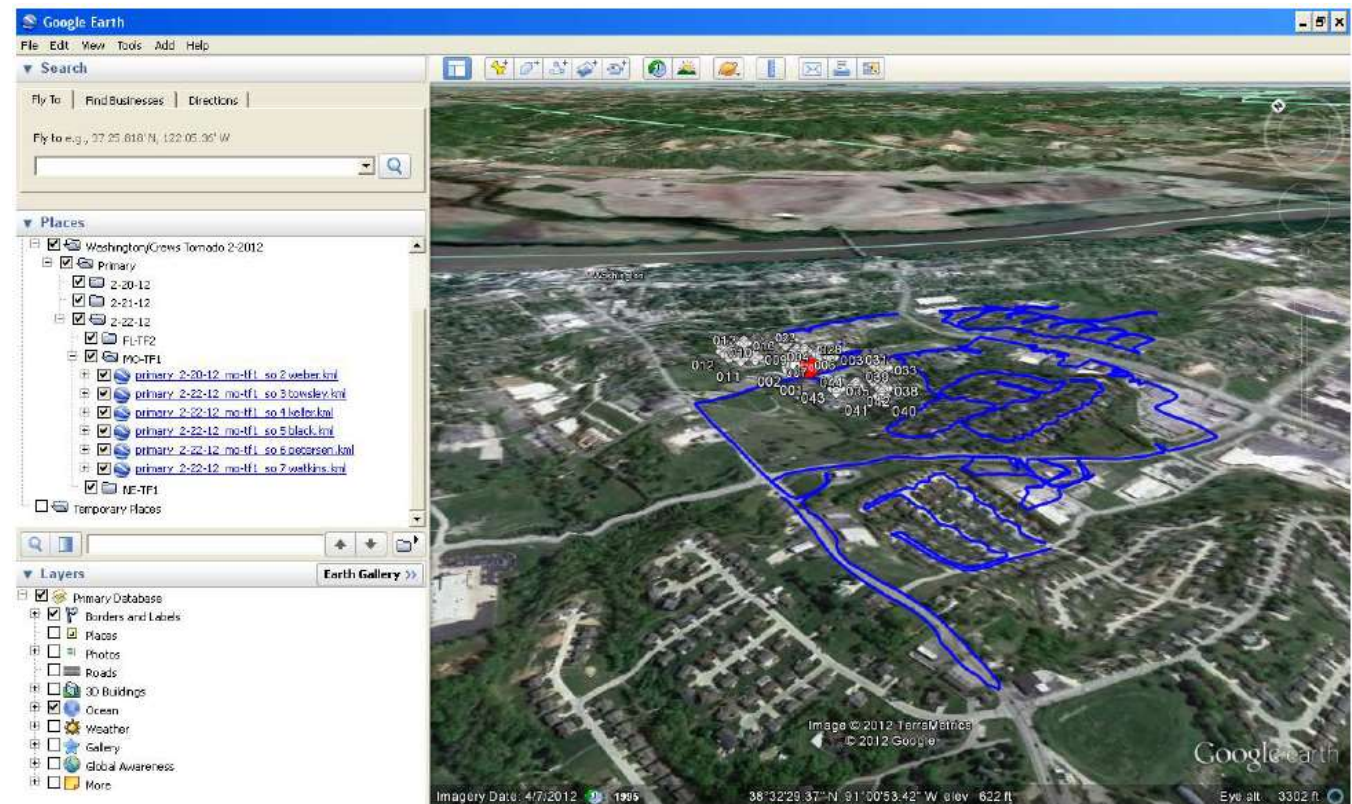
Basecamp

- Edit data
- Export .gpx



Common Operating Picture (COP)

- Execute Converter
 - KMZ → Open in Google Earth
 - CSV → Quick Tally in Excel



http://garmin.openstreetmap.nl/

Free maps for Garmin brand GPS devices

from OpenStreetMap


Site menu

- [Home](#)
- [About](#)
- [Forum](#)
- [E.A.Q.](#)
- [Manual](#)
- [Screenshots](#)

Other Garmin maps

- [OpenStreetMap](#)
- [OpenFietsMap](#)

[Donate](#)



Tools for mapmakers

- [Boundaries](#)
- [Sea polygons](#)

Choose your map type:

- Generic Routable
- Generic Routable (new style)
- Routable Bicycle (Openfietsmap Lite)
- Generic Nautical (non-routable)
- Transparent overlay with elevation contours

Include a TYP file (Optional):

None

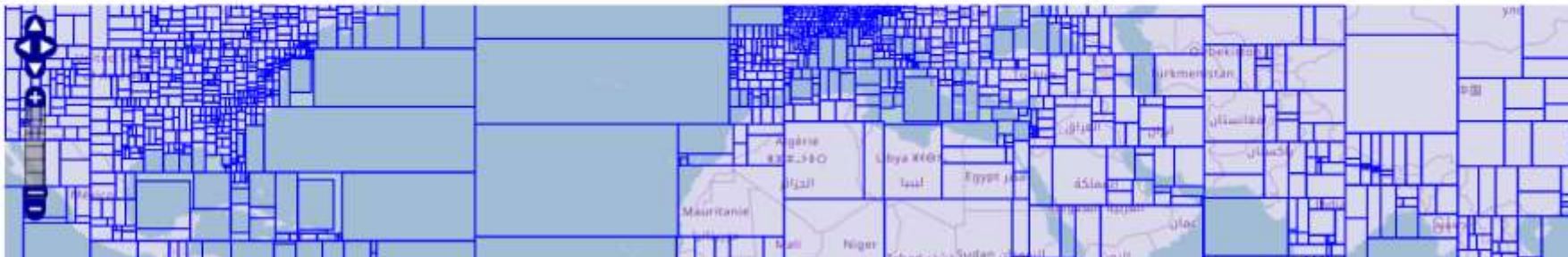
Choose a predefined country:

Africa | Asia | Europe | North America | Oceania | South America

Perhaps you'd like to add some additional tiles?

Enable manual tile selection: , then use the map below to add and remove tiles to the selection. [Reset Selection](#)

Request your map or download it directly:
(Make a selection first)



GPS Course Development



GPS Endorsement Bolt

- 2 hour training component
- Meets ASTM F3071 – 14 Standard Guide for Basic Wilderness GPS/GNSS Use (GPS/GNSS-IW) Endorsement
- Determine one's position and collect location data in a wilderness setting
- US National Grid

Intermediate GPS Endorsement Course

- 8 hour course
- ASTM F3072 – 14 Standard Guide for Intermediate Wilderness GPS/GNSS Use (GPS/GNSS-IIW) Endorsement
- Use a GPS to navigate in the wilderness
- US National Grid



WE WANT YOU!

jared.doke@gmail.com