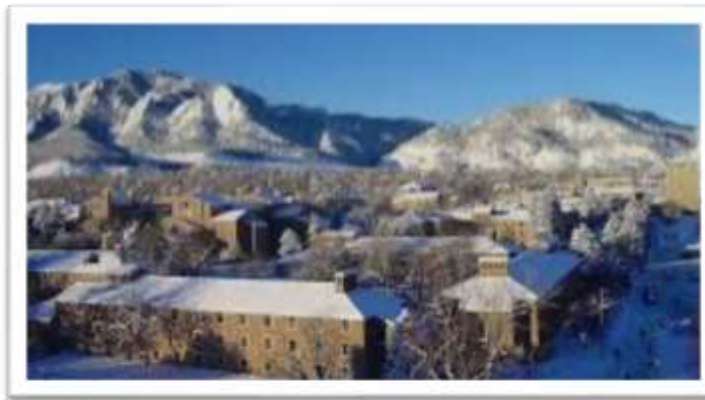


2018 National Geospatial Preparedness Summit



December 4, 2018

www.napsgfoundation.org | @napsgfoundation

Welcome and Opening Remarks

Rand Napoli, Chairman, NAPSG Foundation

David Alexander, US Department of Homeland Security Science and
Technology Directorate

***The nation's only preparedness summit
dedicated to advancing the use of
innovative technology for first responders.***

Next Two Days

Tuesday, December 4

8:30am	Opening Remarks and Disaster Innovation Talks
10:30am	Breakout Workshops and Training Sessions
12:00pm	Lunch
1:00pm	StartEx – Winter Wrath 2018
4:30pm	Hot Wash and Debrief
5:30pm	Hosted Networking Social <i>West Flanders Brewing * 1125 Pearl Street * Boulder, CO 80302</i>

Wednesday, December 5

9:00am- 12:00pm	National Geo-Enabled Planning Workshop <i>Kittredge Central Hall * 2480 Kittredge Loop Drive * Boulder, CO 80310</i>
--------------------	---

Disaster Innovation Talks




Dan Alexander, Director, National Integration Center, FEMA

Jeb Benson, Public Safety Communications Research, National Institute of Standards and Technology

Laura McGorman, Policy Lead for Disaster Maps, Facebook



Morning Breakout Sessions

	Leaders & Decision Makers	First Responders & Planners	GIS & Technologists	
10:30 a.m.	Workshop: Current and Future State of the Union on Preparedness Data  Red <i>Glenn Miller Ballroom – West</i>	Work Session: Mutual Aid and Crisis Management Technology Challenges and Solutions  Green <i>Glenn Miller Ballroom – East</i>	Session A Training: Deploying Core Operational Information with Web GIS  Blue <i>Conference Room 247</i>	Session B Training: Deploying Core Operational Information with Web GIS  Yellow <i>Conference Rooms 384 & 386</i>

Detailed Agenda



bit.ly/18ngps



Winter Wrath 2018



Exercise Goal

Stress test technical and operational skills in using geo-enabled decision support capabilities – to promote shared understanding and enhanced operational coordination.

Key Themes

- What are the **core information needs** for decision makers throughout readiness and into response and recovery?
- Based on these core information needs – how should spatial data be managed, shared, analyzed, and visualized to support **effective decision making**?
- How can **crowdsourced information** be integrated with GIS to improve situational awareness and aid decision making during an event?
- How do the different solutions for **managing and sharing resource information** across jurisdictions improve or hinder operational coordination in a mutual aid event?

Exercise Objectives

- Validate and strengthen understanding of operational decision points, information requirements, and GIS capabilities
- Build knowledge on how to use live field data from rapid damage assessments to inform operational decision making
- Develop an understanding of technology-enriched resource management and mutual aid operations
- Strengthen GIS staff understanding of how to develop and deliver the right data collection and information products to decision makers at the right time to enable more effective operational coordination
- Strengthen decision maker and operator understanding of GIS capabilities, products, and analysis available to support decision making prior to, during, and after an event
- Bridge communication gaps between decision makers, operators and GIS staff to better anticipate and fulfill information requirements

Exercise Logistics

- **Rooms:** At the end of this briefing, you will be provided with a pre-determined room assignment which represents a jurisdiction within the North Central Colorado All-Hazards Region (NCR).
- **Roles:** Each room will have a few Players with pre-determined emergency management staff positions.
- **Facilitators:** Each room will have a Facilitator that will guide discussion and provide additional context to questions and tasks.

Exercise Logistics

- **Injects:** We will use FEMA Preparedness Toolkit to send e-mails to Players and Facilitators when new scenario information is released (aka, Injects). These will occur about every 15 minutes.
- **Winter Wrath Story Map:** We will use a Story Map (link provided in first e-mail) with instructions, questions, and tasks for Exercise Players which will complement the PrepToolkit e-mails. You will have to refresh this Story Map to see new content and the facilitators will also have this loaded on a large screen for viewing.
- **ArcGIS Online:** You will be provided with a few generic, pre-configured applications that are accessible to all Players. The GIS Specialists will also be provided an opportunity to create web maps and applications. They will share “hotwash” products into an ArcGIS Online Group – further instructions provided in the Story Map.

Assumptions

- This is ***YOUR*** exercise.
- We are **not** evaluating your individual skills or knowledge.
- We are observing and capturing information.
- There is no right or wrong answer or solution.
- There are no right or wrong GIS products.
- This exercise is not simulating how incident operations are conducted in Colorado, rather the exercise scenario and simulated groups provide operational context.

Helpful Hints

- Use the **tools** you have learned about at this Summit
 - Web-based and Desktop GIS solutions
 - US National Grid
 - HIFLD Data and GII Services
 - Standardized symbology
 - Standard templates and applications
- **Injects** will be delivered digitally to the contact information you provided during registration and/or through your facilitators (as a backup)
- **Player action and discussion** is a key part of **achieving the exercise goal** and strengthening mutual understanding of how GIS can be employed **to change outcomes for survivors**.
- This is **a ½ day exercise** – we will not solving the whole event scenario. Work in parallel and divide tasks amongst resources.

Final Discussion and Hot Wash

Assign 1 Operator and 1 GIS Specialist to present to the larger group:

- What went well?
- What went not so well?
- What would you like to have prepared in advance for next time?

The GIS Specialist can quickly present (on-screen) any apps that support the points made above. Instructions for sharing these apps in a Player Group will be provided. Please see Paul Doherty at the Glenn Miller Ballroom – Center at **4:25PM sharp to get setup.**

Final Discussion and Hot Wash

Assign 1 Operator and 1 GIS Specialist to present to the larger group:

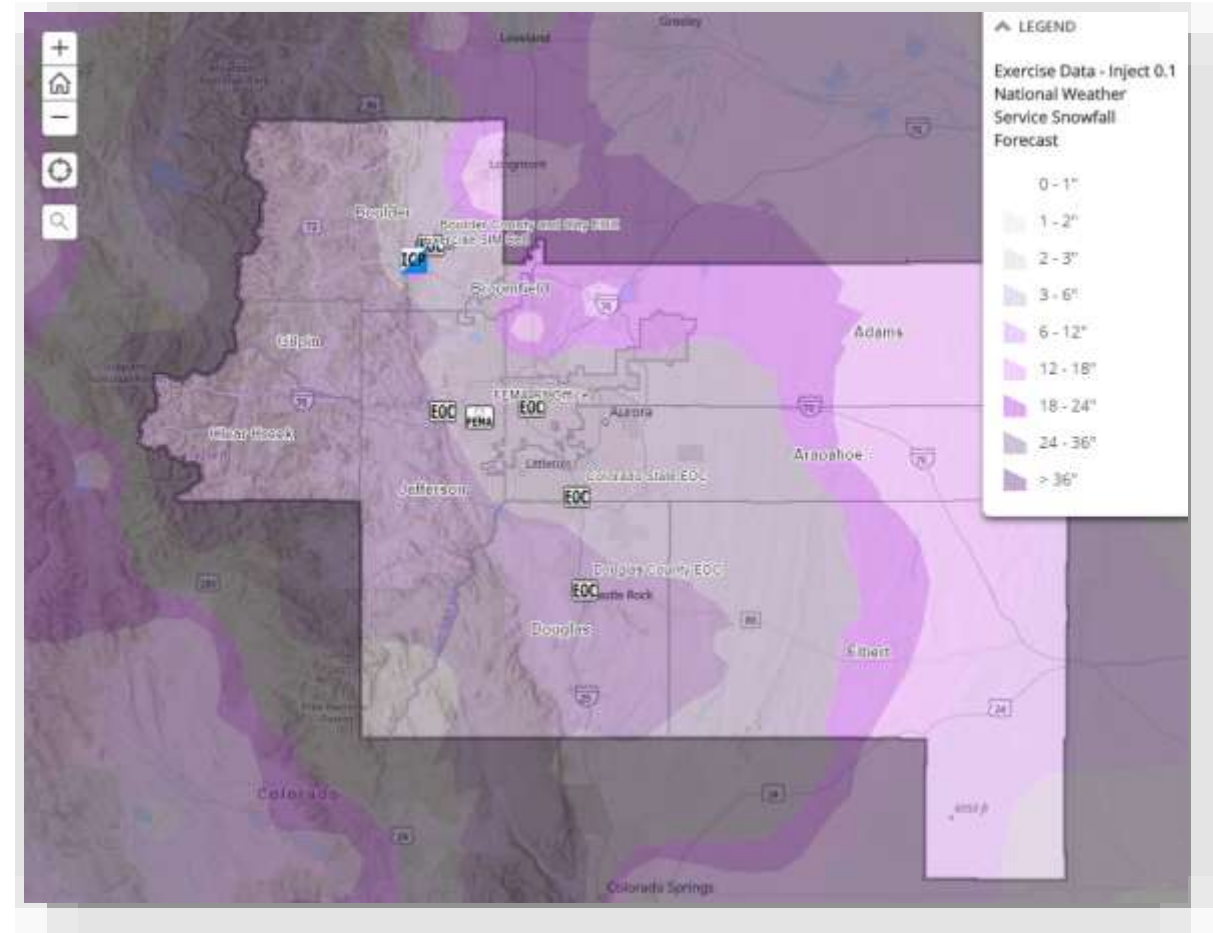
- What went well?
- What went not so well?
- What would you like to have prepared in advance for next time?

Each team will give a **5-minute briefing** based on exercise play and with a focus on improvement in their own organizations versus feedback on the Winter Wrath exercise itself. Focus on what the majority of your group believe needs to be prepared in advance.

Winter Wrath Scenario Overview

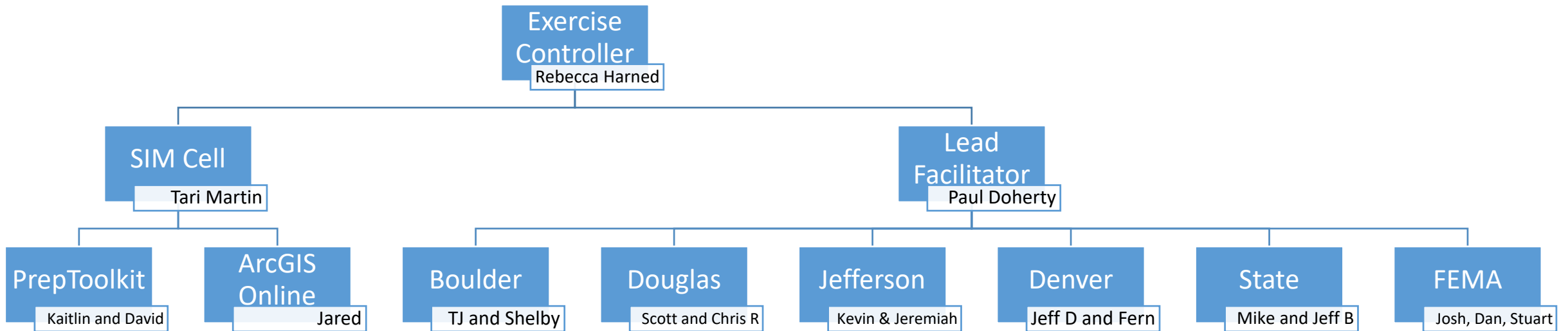


YouTube Video describing the 2003 snowfall event – credit “sshuzam”.



Overview of potential snowfall totals based on the 2003 snowfall event.

Exercise Control Team



Afternoon Exercise Agenda

	StartEX • Winter Wrath 2018					
1:20 p.m.	<div><div><div>Group A: State of CO Emergency Operations Center</div><div><div></div><div>Yellow</div></div><div>Conference Rooms 384 & 386</div></div></div>	<div><div><div>Group B: FEMA Region 8 Regional Response Coordination Center</div><div><div></div><div>Blue</div></div><div>Conference Room 247</div></div></div>	<div><div><div>Group C: City & County of Boulder Emergency Operations Center</div><div><div></div><div>Red</div></div><div>Glenn Miller Ballroom – West</div></div></div>	<div><div><div>Group D: City & County of Denver Emergency Operations Center</div><div><div></div><div>Green</div></div><div>Glenn Miller Ballroom – East</div></div></div>	<div><div><div>Group E: Jefferson County Emergency Operations Center</div><div><div></div><div>Black</div></div><div>Glenn Miller Ballroom – Center</div></div></div>	<div><div><div>Group F: Douglas County Emergency Operations Center</div><div><div></div><div>Purple</div></div><div>Multipurpose Room 235</div></div></div>
4:30 p.m.	Hot Wash • Exercise After Action Debrief Glenn Miller Ballroom – Center					
5:00 p.m.	NGPS Debrief • Critical Take A-Ways & Next Steps Glenn Miller Ballroom – Center					
5:30 p.m. - 7:00 p.m.	Hosted Networking Social West Flanders Brewing Company • 1125 Pearl Street Boulder, CO 80302 (2nd Floor) Hors d'oeuvres and Beverages Will be Provided					

Detailed Agenda

bit.ly/18ngps

Final Discussion and Hot Wash

Assign 1 Operator and 1 GIS Specialist to present to the larger group:

- What went well?
- What went not so well?
- What would you like to have prepared in advance for next time?

The GIS Specialist can quickly present (on-screen) any apps that support the points made above. Instructions for sharing these apps in a Player Group will be provided. Please see Paul Doherty at the Glenn Miller Ballroom – Center at **4:25PM sharp to get setup.**

Final Discussion and Hot Wash

Assign 1 Operator and 1 GIS Specialist to present to the larger group:

- What went well?
- What went not so well?
- What would you like to have prepared in advance for next time?

Each team will give a **5-minute briefing** based on exercise play and with a focus on improvement in their own organizations versus feedback on the Winter Wrath exercise itself. Focus on what the majority of your group believe needs to be prepared in advance.

Batting Order

1. Boulder City and County
2. Douglas County
3. Jefferson County
4. City and County of Denver
5. State of Colorado
6. FEMA Region 8

Boulder City and County

- What went well?
- Not so well?
- Must be prepared in advance?

Douglas County

- What went well?
- Not so well?
- Must be prepared in advance?

Jefferson County

- What went well?
- Not so well?
- Must be prepared in advance?

City and County of Denver

- What went well?
- Not so well?
- Must be prepared in advance?

State of Colorado

- What went well?
- Not so well?
- Must be prepared in advance?

FEMA Region 8

- What went well?
- Not so well?
- Must be prepared in advance?

Day 2 Wrap-Up

Disaster Innovation Talks

Current and Future State of Preparedness Data

Prioritized gaps in national preparedness data needed across the whole community

Mutual Aid Policy & Technology

Defined the future state of resource management and mutual aid technology

Technical Skills

Got hands-on in deploying core operational information with the latest web GIS software

Exercise – Winter Wrath 2018

Stress tested technical and operational skills in applying geo-enabled situational awareness and decision support capabilities for decision making and operational coordination

NGPS Debrief

- What are 3 things you will bring back to your agency?
 - 1 Piece of Knowledge
 - 1 Communication Skill
 - 1 Leadership Skill
- What goal have you set for your agency coming out of NGPS?
- What is the first thing you will do when you return towards accomplishing that goal?



All NGPS materials will be made available on our website by the end of December

Day 3 – National Geo-Enabled Planning Workshop

When: 9:00am-12:00pm * December 5

Where: Kittredge Central Hall * 2480 Kittredge Loop Drive * Boulder, CO 80310

Purpose: Collaboratively define standardized frameworks and guidance around geo-enabling Emergency Operation Plans (EOPs), pre-incident plans, and crisis action plans - across local, state, territory, tribal, and Federal agencies.

- Understand limitations in applying plans during real-world events
- Identify and address key challenges in integrating geo-enabled technology and analysis in the planning process
- Define model practices in geo-enabling EOPs, pre-incident plans, and crisis action plans.

Hosted Networking Reception

5:30pm-7:00pm

West Flanders Brewing Company

1125 Pearl Street * Boulder, CO 80301 (2nd Floor)

Heavy Hors d'oeuvres and beverages will be provided

