

# **NAPSG 2018**



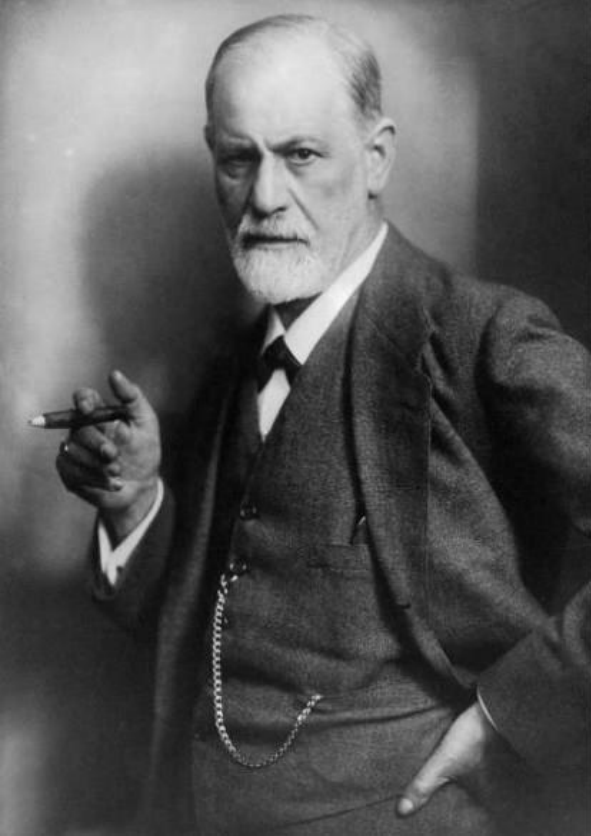






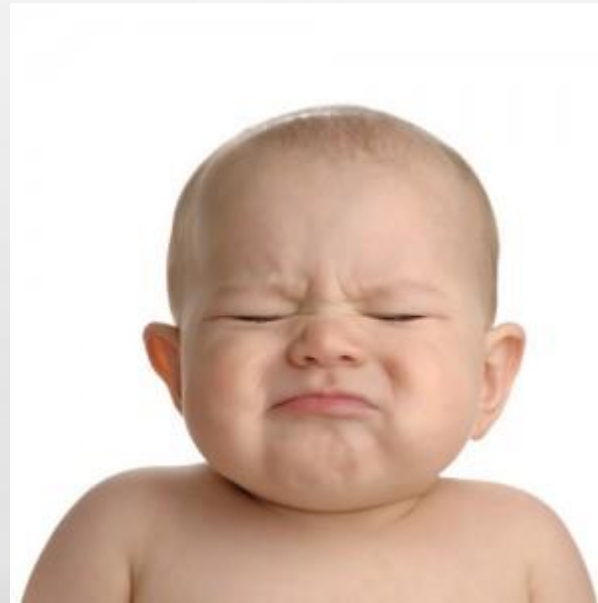






**MEET PEOPLE  
WHERE THEY  
ARE**











# **SHIFTING EXPECTATIONS**



# **DEFINE THE MEAT AND POTATOES**







# BOULDER EOC PRIORITIES

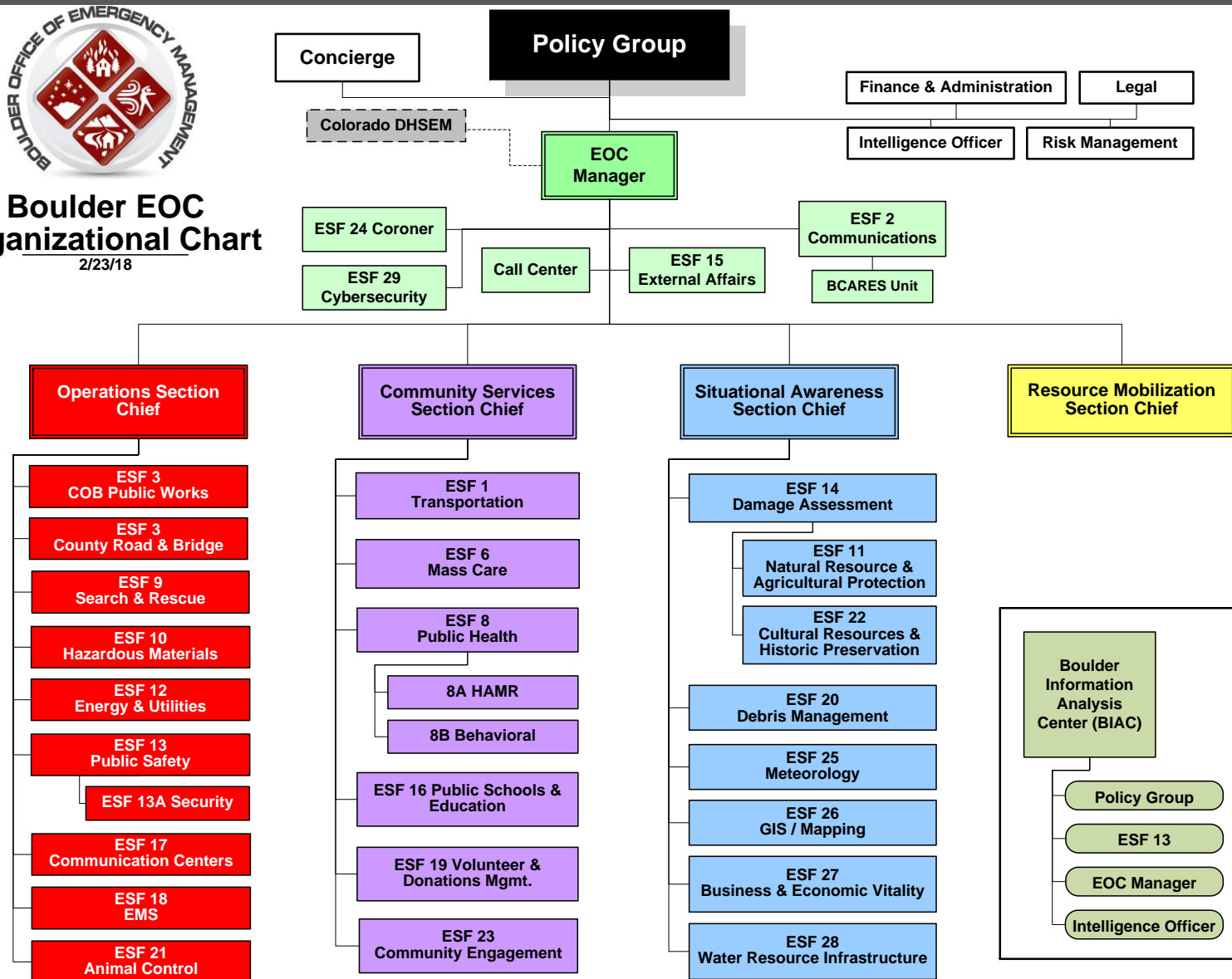
- CRISP EOC
  - COORDINATE COMMUNICATIONS
  - RESOURCE SUPPORT
  - INFORMATION MANAGEMENT
  - SITUATIONAL AWARENESS AND COP
  - POLICY
  - EVENT MANAGEMENT
  - OPERATIONAL SUPPORT
  - CONTINUITY OF GOVERNMENT



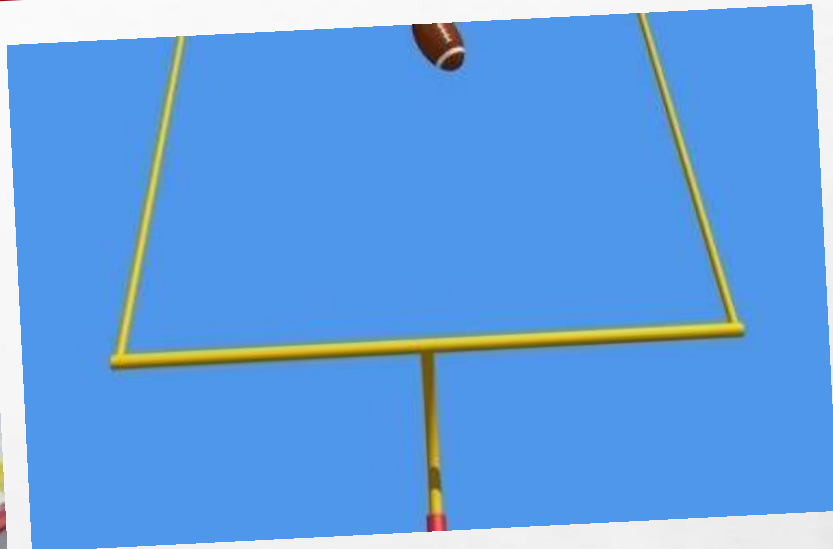


## Boulder EOC Organizational Chart

2/23/18



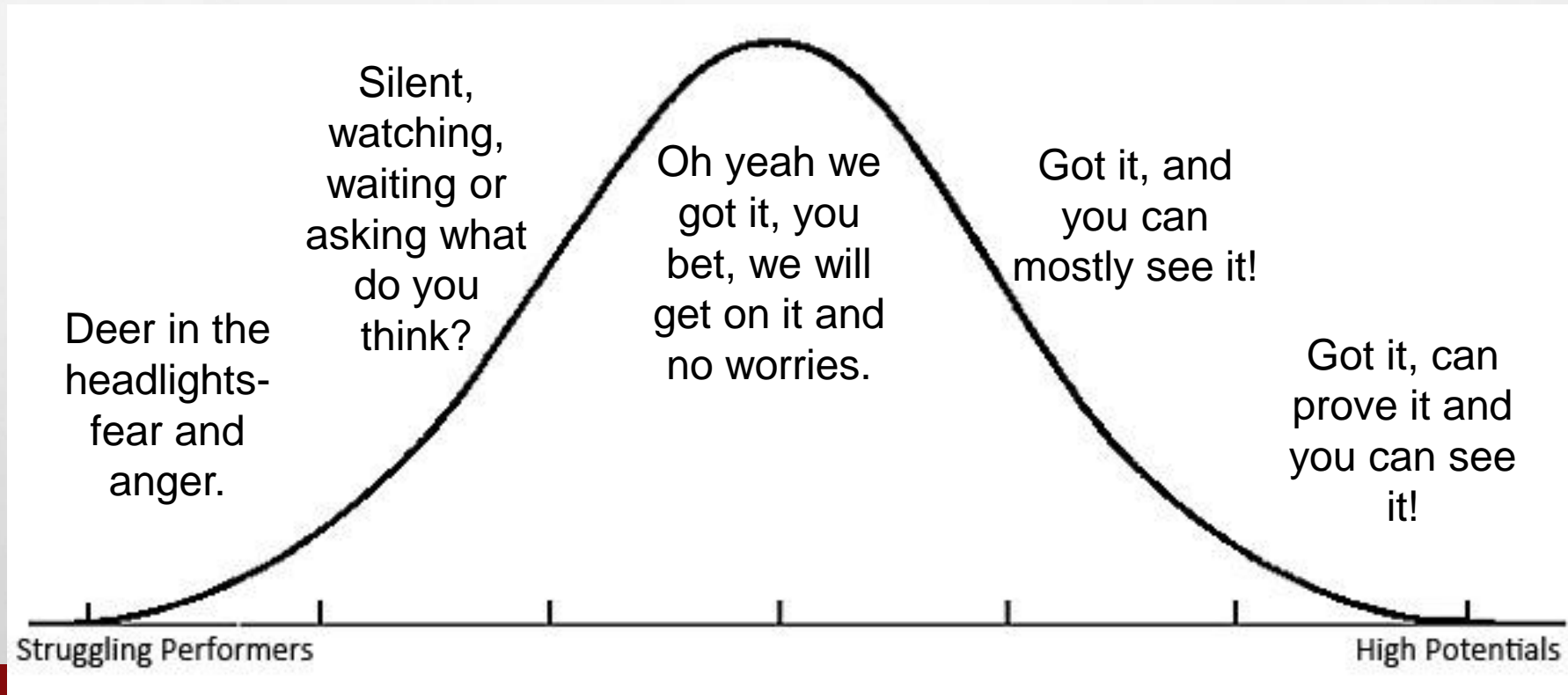




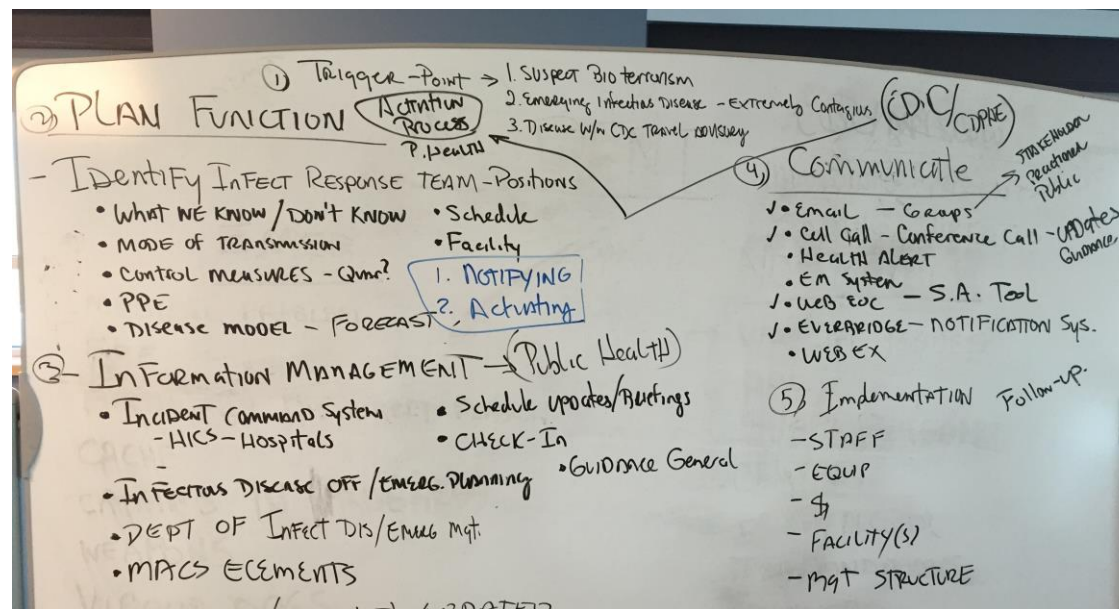
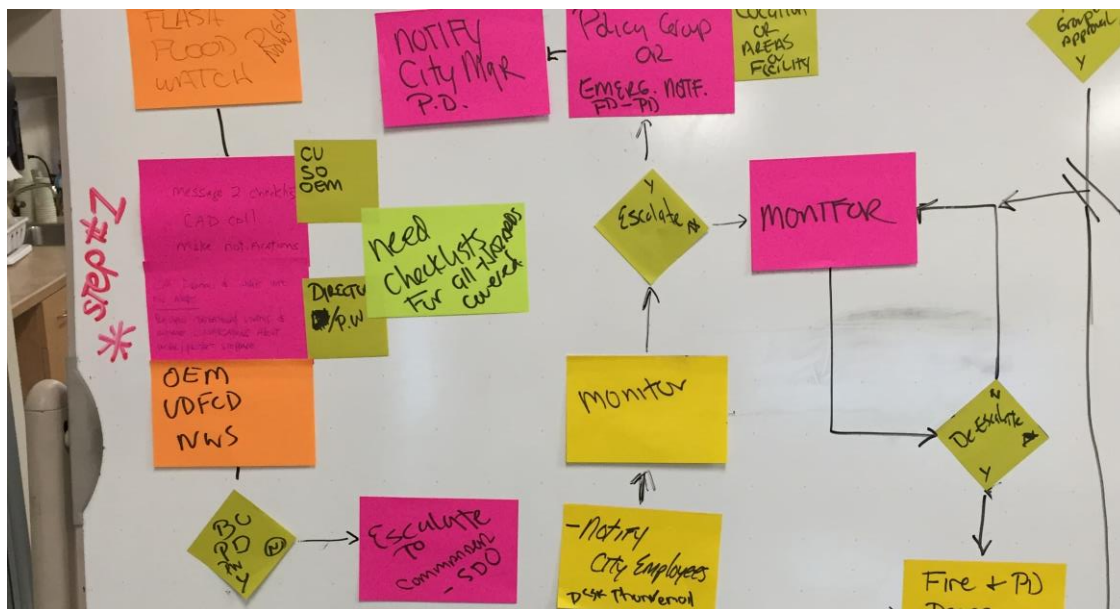
# VARIANCE



# THE LOCAL BELL CURVE

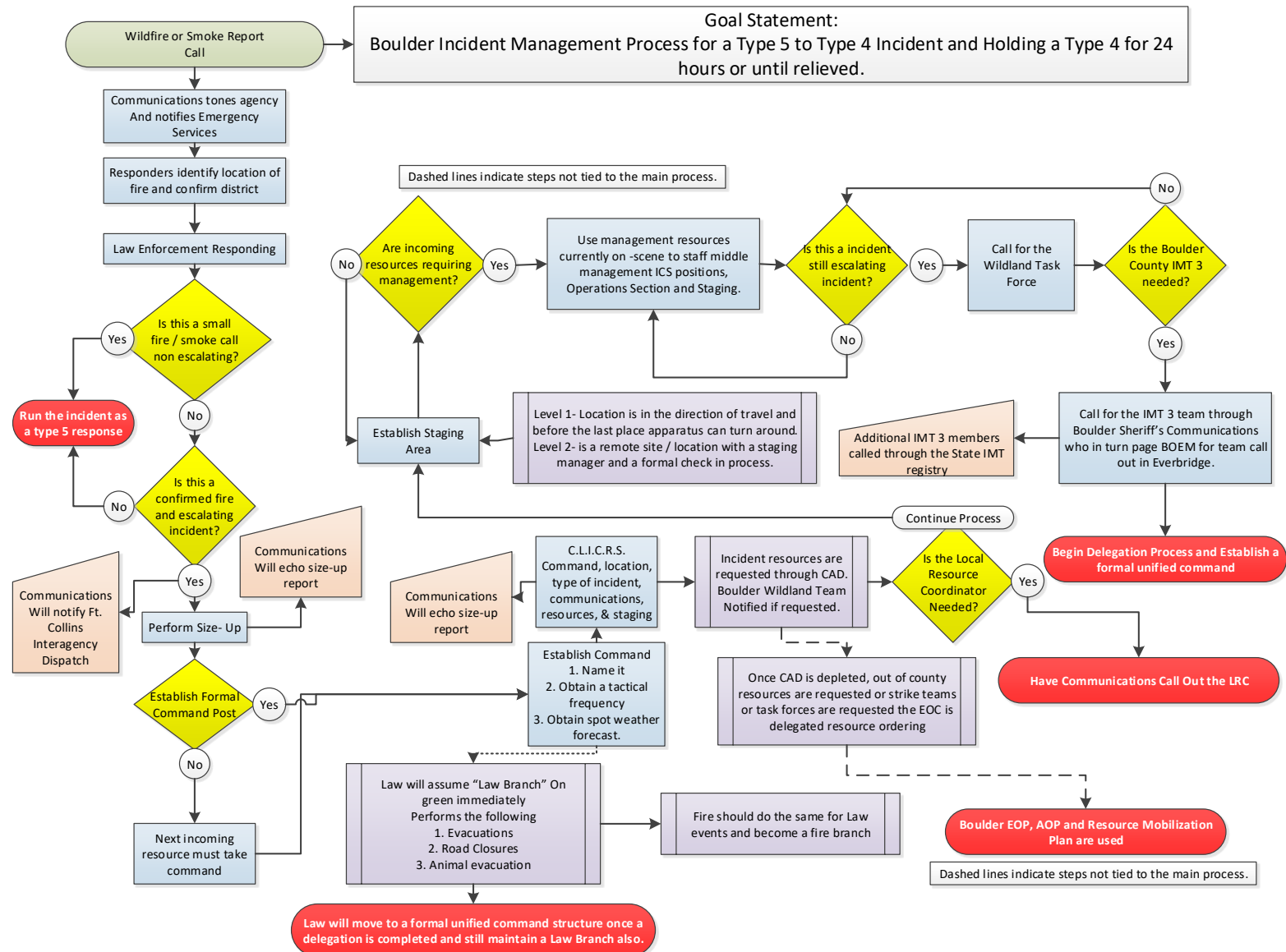






# PROCESS











Address/Location:		CAD#
Attachment:		<input type="button" value="Update"/>
This information is not for public disclosure and is intended for authorized WebEOC users only.		
Date/Time:	06/29/2012 06:47:42	<b>Flagstaff Fire June 26</b> EOC is open with core activation at 0700, Dan Barber
Position:	EOC Manager	
Name:	Dan Barber	
Record:	<u>3885</u>	
Address/Location:		CAD#
Attachment:		<input type="button" value="Update"/>
This information is not for public disclosure and is intended for authorized WebEOC users only.		
Date/Time:	06/28/2012 21:30:16	<b>Flagstaff Fire June 26</b> Boulder EOC will close at 2200 and reopen at 0700 June 29.  June 28 - 8:04 p.m. - Evening briefing Here is the latest Flagstaff Fire information as of the Thursday evening briefing: <ul style="list-style-type: none"><li>• The fire is 40 percent contained with a goal of full containment by Saturday.</li><li>• No significant growth today and no significant growth expected overnight; still 300 acres in size.</li><li>• No structures destroyed, damaged nor threatened and no injuries.</li><li>• Fire lines are in place on the west and south sides of the fire area.</li><li>• Weather tonight: 54-58 degrees; 53-58 percent relative humidity; gusty winds possible</li><li>• Wind gusts may produce visible hot spots overnight</li><li>• Crews will be working all night – including patrols near the fire perimeter and on the city of Boulder's southwestern limits – looking for and putting out spot fires as they happen.</li></ul> There are no more formal media briefings scheduled.
Position:	EOC Manager	
Name:	Dan Barber	
Record:	<u>3884</u>	
Address/Location:		CAD#
Attachment:		<input type="button" value="Update"/>
This information is not for public disclosure and is intended for authorized WebEOC users only.		



Flagstaff Fire June 26

## Resource Status Board fusion - Operational Resources

Jurisdiction: **Boulder**Resource Category: **All Categories**[New Record](#)[Search](#)[Clear Search](#)
[All Records](#)
[Available](#)
[Available Local](#)
[Available Statewide](#)
[In Station](#)
[Move Up](#)
[Assigned](#)
[On Scene](#)
[Staging](#)
[Demobed](#)
[Out of Service](#)
[Not Reported](#)
[Print PDF](#)

Agency	Resource Category	Resource Kind	Resource Type	Local Resource ID	STATUS	Dispatch No	Assigned Incident	Assigned County	Location	Details
Boulder Mountain Fire Protection District	Fire Fighting			Chipper	Available Local	303-441-4444			1905 Linden Drive Boulder, CO 80304	<a href="#">Details</a>
Rocky Mountain Fire District	Fire Fighting	Aerial Apparatus	Type 1	6327/2416	Available Local	303-441-4444			7700 Baseline Road Boulder, CO 80303	<a href="#">Details</a>
Hygiene Fire Protection District	Fire Fighting	Aerial Apparatus		2819	Available Local	303-441-4444			7523 Hygiene Rd. Hygiene, CO 80533	<a href="#">Details</a>
Louisville Fire Protection District	Fire Fighting	Aerial Apparatus	Type 1	2717	Available Local	303-441-4444			895 West Via Appia Louisville, CO 80027	<a href="#">Details</a>
Louisville Fire Protection District	Fire Fighting	Aerial Apparatus	Type 1	2716	Available Local	303-441-4444			895 West Via Appia Louisville, CO 80027	<a href="#">Details</a>
Boulder Fire-Rescue	Fire Fighting	Aerial Apparatus	Type 1	2506	Available Local	303-441-3333			1805 33rd St. Boulder, CO 80301	<a href="#">Details</a>
Nederland Fire Protection District	Fire Fighting	Aerial Apparatus	Type 3	5616	Available Local	303 441 4444			650 W. 4th Nederland, CO 80466	<a href="#">Details</a>
Boulder Fire-Rescue	Fire Fighting	Aerial Apparatus	Type 1	2516	Available Local	303-441-3333			1805 33rd St. Boulder, CO 80301	<a href="#">Details</a>
Boulder County Transportation	Public Works and Engineering	Air Compressor	Type 5	1820	Available Local	303-441-4444			5201 Saint Vrain Road, Longmont, CO	<a href="#">Details</a>
Indian Peaks Fire Protection District	Health and Medical	Ambulance	Type 3	5322	Available Local	303-441-4444			10 Utica Street Ward, CO 80481	<a href="#">Details</a>
Rocky Mountain Fire District	Fire Fighting	Ambulance	Type 2	5325/2425	Available Local	303-441-4444			7700 Baseline Road Boulder, CO 80303	<a href="#">Details</a>
Mountain View Fire Protection District	Health and Medical	Ambulance		2224	Available Local	303-441-4444			9119 County Line Rd. Longmont, CO 80501	<a href="#">Details</a>
Mountain View Fire Protection District	Health and Medical	Ambulance		2226	Available Local	303-441-4444			9119 County Line Rd. Longmont, CO 80501	<a href="#">Details</a>
Mountain View Fire Protection District	Health and Medical	Ambulance		2227	Available Local	303-441-4444			9119 County Line Rd. Longmont, CO 80501	<a href="#">Details</a>
Boulder Emergency Squad	Search and Rescue	ATV	FEMA Type 4	3152	Available Local	303-441-4444			3532 Diagonal Hwy Boulder, CO 80301	<a href="#">Details</a>
Indian Peaks Fire Protection District	Fire Fighting	ATV	Type 4	ATV	Available Local	303-441-4444			10 Utica Street Ward, CO 80481	<a href="#">Details</a>
Sugarloaf Fire Protection District	Fire Fighting	ATV	Type 7	5534	Available Local	303-441-4444			1360 Sugarloaf Road Boulder, CO 80302	<a href="#">Details</a>
Boulder Emergency Squad	Fire Fighting	ATV	Type 4	3152	Available Local	303-441-4444			3532 Diagonal Hwy Boulder, CO 80301	<a href="#">Details</a>
Sugarloaf Fire Protection District	Fire Fighting	ATV	Type 7	5535	Available Local	303-441-4444			1360 Sugarloaf Road Boulder, CO 80302	<a href="#">Details</a>
Indian Peaks Fire Protection District	Fire Fighting	ATV	Type 4	ATV	Available Local	303-441-4444			10 Utica Street Ward, CO 80481	<a href="#">Details</a>

## Flagstaff Fire June 26

Search

Clear Search

## EOC Form

Order Priority/Placed		Record No		Incident	Requestor	Last Update	Description	Approved by				Order Placed	Planning	Demob	Details
								ESF	Section Chief	Finance	Logistics				
2 hrs	Y	548	<a href="#">Edit</a>	Flagstaff Fire June 26	Doug Caven LOGS/Plans	07/03/2012 11:57:24	Fire Fighting Aparatus	Y	Y	Y	Y	Y	Y	Y	<a href="#">View</a>
4+ hrs	Y	646	<a href="#">Edit</a>	Flagstaff Fire June 26	Mark Murray, ICP Logistics	07/02/2012 16:03:32	Refrigerated Trailer and Ice for ICP	Y	Y	Y	Y	Y	Y	Y	<a href="#">View</a>
4+ hrs	Y	587	<a href="#">Edit</a>	Flagstaff Fire June 26	Mark Murray	07/02/2012 16:01:12	Chairs & Tables	Y	Y	Y	Y	Y	Y	Y	<a href="#">View</a>
2 hrs	Y	564	<a href="#">Edit</a>	Flagstaff Fire June 26	Mark Murray resource ordering chief	07/02/2012 15:55:38	Portable Toilets	Y	Y	Y	Y	Y	Y	Y	<a href="#">View</a>
2-4 hrs	Y	946	<a href="#">Edit</a>	Flagstaff Fire June 26	Mark Murray, ICP	07/02/2012 15:47:54	Rooms at CU	Y	Y	Y	Y	Y	Y	Y	<a href="#">View</a>
2 hrs	Y	944	<a href="#">Edit</a>	Flagstaff Fire June 26	Dave Booton, IC, via radio	07/02/2012 15:34:35	4 Strike Teams of Type 6 Engines for IA	Y	Y	Y	Y	Y	Y	Y	<a href="#">View</a>
2 hrs	Y	942	<a href="#">Edit</a>	Flagstaff Fire June 26	Chief Dave Cain and Chief Larry Donner	07/02/2012 12:53:24	7 - Type 1,2,3 Task Forces to Fairview High School for IA	Y	Y	Y	Y	Y	Y	Y	<a href="#">View</a>
4+ hrs	Y	660	<a href="#">Edit</a>	Flagstaff Fire June 26	Mark Murray, LSC in the ICP	07/02/2012 10:12:04	Cots and Blankets	Y	Y	Y	Y	Y	Y		<a href="#">View</a>
2 hrs	Y	547	<a href="#">Edit</a>	Flagstaff Fire June 26	Don Whittemore / IC	07/02/2012 10:11:05	2 Type 1 Hand Crews	Y	Y	Y	Y	Y	Y	Y	<a href="#">View</a>
2 hrs	Y	549	<a href="#">Edit</a>	Flagstaff Fire June 26	Mark Murray	07/02/2012 10:10:30	SOFR Personnel	Y	Y	Y	Y	Y	Y	Y	<a href="#">View</a>
4+ hrs	Y	594	<a href="#">Edit</a>	Flagstaff Fire June 26	Mark Murray-Resource Ordering Chief	07/02/2012 10:10:01	1 Hand Crew of 4 Personnel	Y	Y	Y	Y	Y	Y	Y	<a href="#">View</a>
2-4 hrs	Y	685	<a href="#">Edit</a>	Flagstaff Fire June 26	Mark Murray-Resource Ordering Chief	07/02/2012 10:09:07	Dumpster and Toilets	Y	Y	Y	Y	Y	Y	Y	<a href="#">View</a>
2-4 hrs		672	<a href="#">Edit</a>	Flagstaff Fire June 26	Mark Murray, LSC	07/02/2012 10:07:45	Cache Supplies for Wildland Firefighting	Y	Y	Y	Y		Y	Y	<a href="#">View</a>
2-4 hrs	Y	761	<a href="#">Edit</a>	Flagstaff Fire June 26	Mark Murray-Resource Ordering Chief	07/02/2012 10:05:41	Overnight Accommodation's for Type I Engine Crews	Y	Y	Y	Y	Y	Y	Y	<a href="#">View</a>
4+ hrs	Y	723	<a href="#">Edit</a>	Flagstaff Fire June 26	Rocky - IMT1 IC	07/02/2012 09:19:30	Radio Starter Kit and Fuel Truck from Interagency	Y	Y	Y	Y	Y	Y	Y	<a href="#">View</a>



# Shelters

Incident: Flagstaff Fire June 26


New Record

Filter: Show All

Search:

Search

Clear Search

Name	County	Region	Status	ARC	SN	PF	Capacity	Occupancy	Availability	Last Update	Details	Update
<a href="#">Map</a> East Boulder Recreation Center	Denver	NC Region	CLOSED				0	0	0	06/28/2012 10:07:20	<a href="#">Select</a>	<a href="#">Update</a>
New Vista High School	Denver	NC Region	CLOSED				0	0	0	06/26/2012 19:17:36	<a href="#">Select</a>	<a href="#">Update</a>
South Boulder Recreation Center	Denver	NC Region	STAND BY				0	0	0	03/05/2012 11:22:57	<a href="#">Select</a>	<a href="#">Update</a>
<a href="#">Map</a> Nederland Community Center	Denver	NC Region	STAND BY				50	0	50	03/05/2012 09:50:48	<a href="#">Select</a>	<a href="#">Update</a>
Totals:							50	0				

## Emergency Plan

Print / Save PDF

Print

Return To List

The All Hazards Alert System (AHAS) ▼

GO

## Boulder County Emergency Action Plan.

### Department - Administration / Support

#### Introduction

A fire, flood or other emergency within Boulder County can pose unique problems for building management, building occupants and emergency personnel. Experience dictates that safe and successful decisions during an emergency situation is dependent upon a) a written emergency procedures document, b) periodic review of this document with all employees, and c) a thorough knowledge of your role and responsibilities during an emergency.

**In a fire, flood or other emergency situation, occupants may have to rely upon their own knowledge and disciplined response to ensure self-survival.**

The procedures in this manual are to be followed unless otherwise directed by Police, Fire Department officials or Boulder County "Key Staff". All Key Staff persons are required to become familiar with the building emergency equipment and all emergency plans for their "primary" building.

All Boulder County employees should have received emergency procedures in a "Quick Reference" format. If you require additional copies, please contact Risk Management at 303.441.3872. A summary of this "Quick Reference" format is on-line for employee access. Please go to "Inside BC's" Risk Management Site at the following hyperlink: Risk Management Emergency Procedures. You may also contact the Office of Emergency Management at 303.441.3390 for additional emergency management information. The Quick Reference Guide is also available for viewing online at [www.boulderoem.com](http://www.boulderoem.com).

It is important that all Boulder County employees familiarize themselves with their building's life safety features which are vital to the safety and security of employees, users and clients. We may be faced with natural and man-made emergency situations and must be prepared to cope with them should they occur. Since you are a County department and probably located within the City jurisdiction, either city police or county sheriff's deputies may respond to your area depending on the size of the emergency. Police will be used in this document as a generic law enforcement term.

#### The All Hazards Alert System (AHAS)

The symbol for this system is the familiar "green/yellow/red" traffic light. Green light means everything is normal, but you should maintain your situational awareness and observe your surroundings. The yellow light means to analyze the situation, be cautious, find out what is happening and then decide what actions to take. The red light indicates that you must stop what you are doing, take action now, and fully implement your emergency plans.

#### WebEOC

Log into WebEOC for significant incident information, press releases, and road closures. Using the City and County Employee login, you can see the most current information of the emergency. This site will also provide you with a link to your Continuity of Operations Plan (COOP) and your Emergency Action Plan. <https://boulcoco.webeocasp.com>

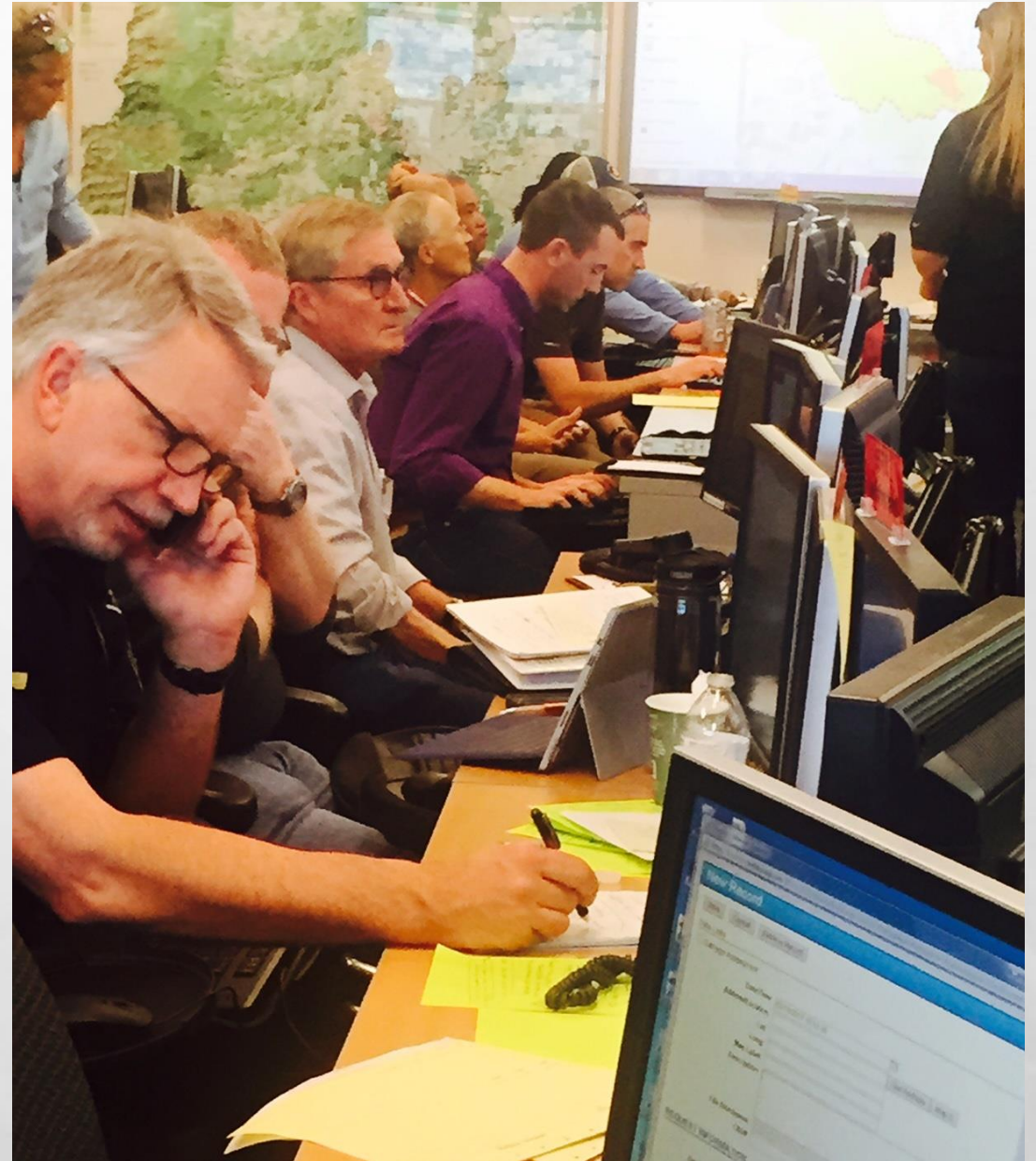
#### Important Telephone Numbers

When calling 911, provide your name, building address and location within the building. In the event of a catastrophe, it is possible that the County's telephone (IP) system will not function. However, if the phones are working be aware that it is not necessary to dial a "9" prefix first. Each division should provide "Key Staff" with a cell phone for



# TRAINING & EXERCISE

- KNOWLEDGE
- BEHAVIOR /  
RECOGNITION
- TASK COMPETENCY



# BASIC SUCCESS EQUATION



+



+

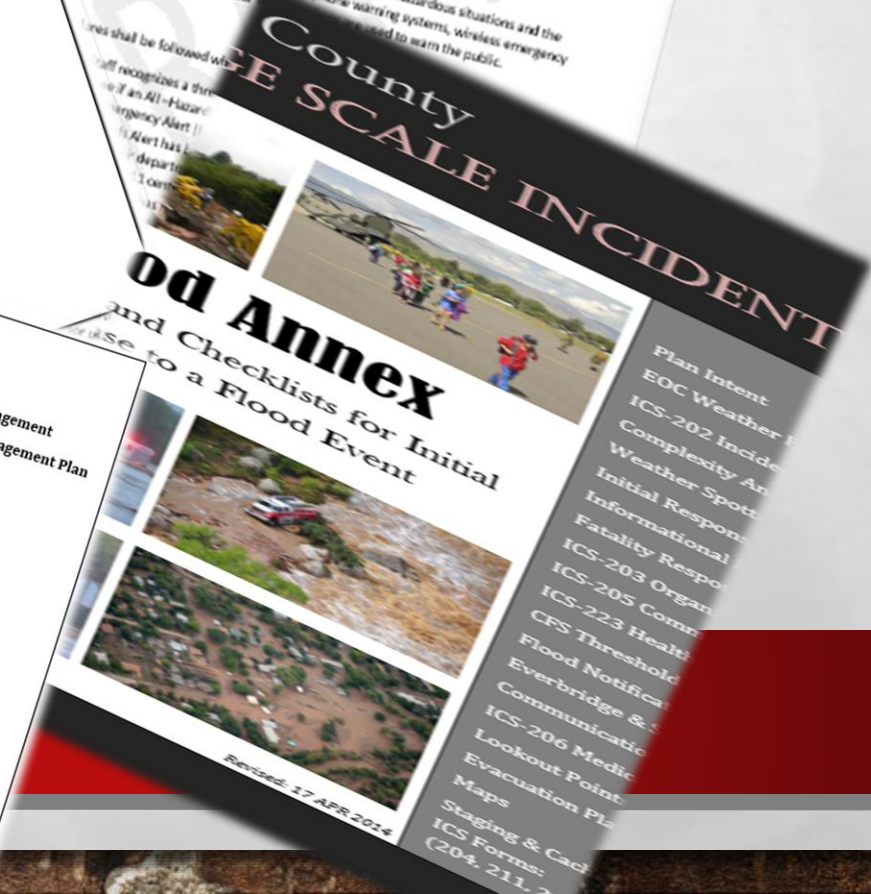
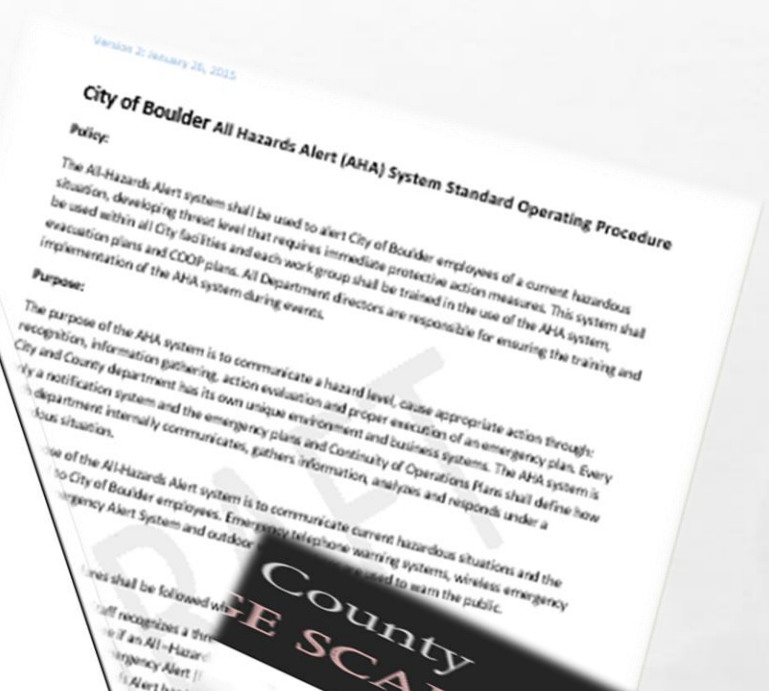


=



# THE OUTPUT

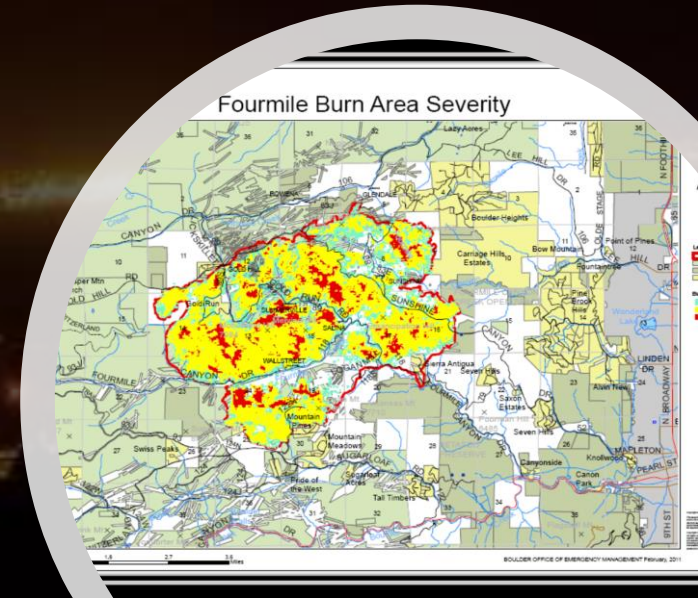
- Efficient
- Easy to Understand
- Our Plan

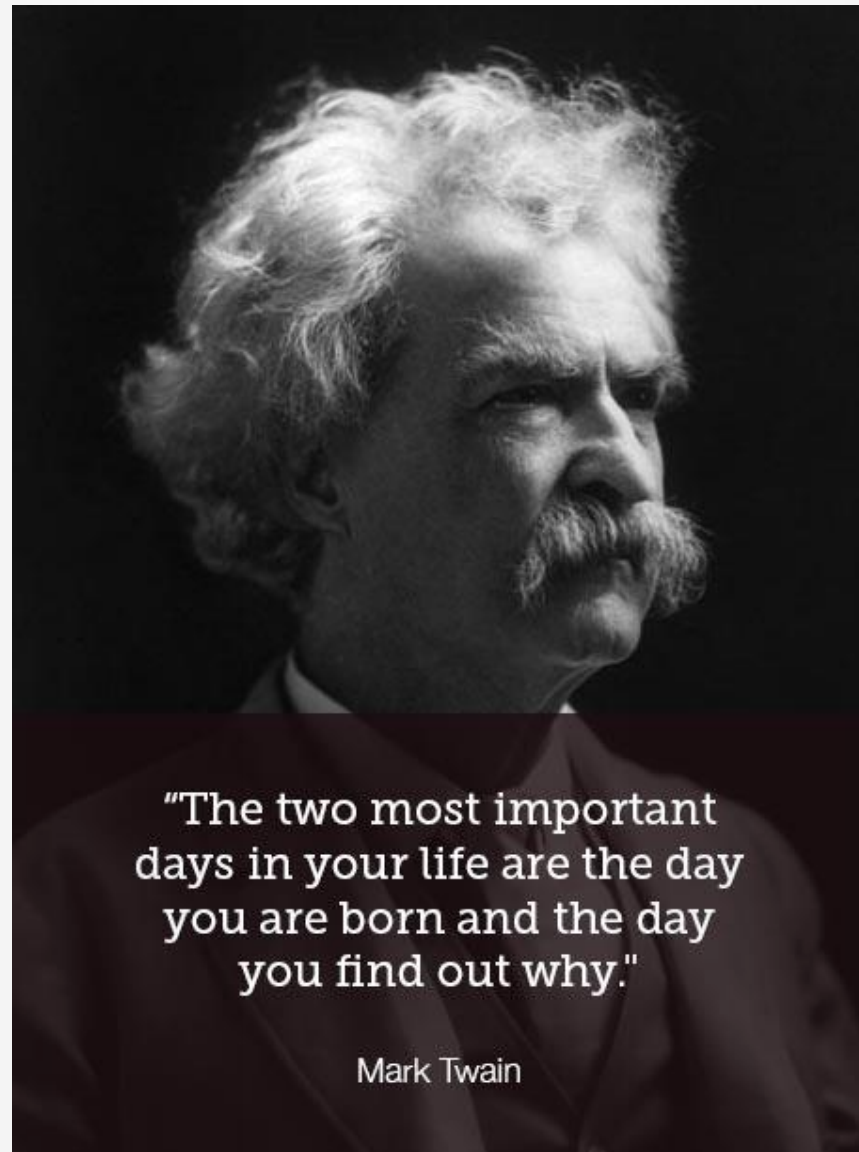






# Then it Happens

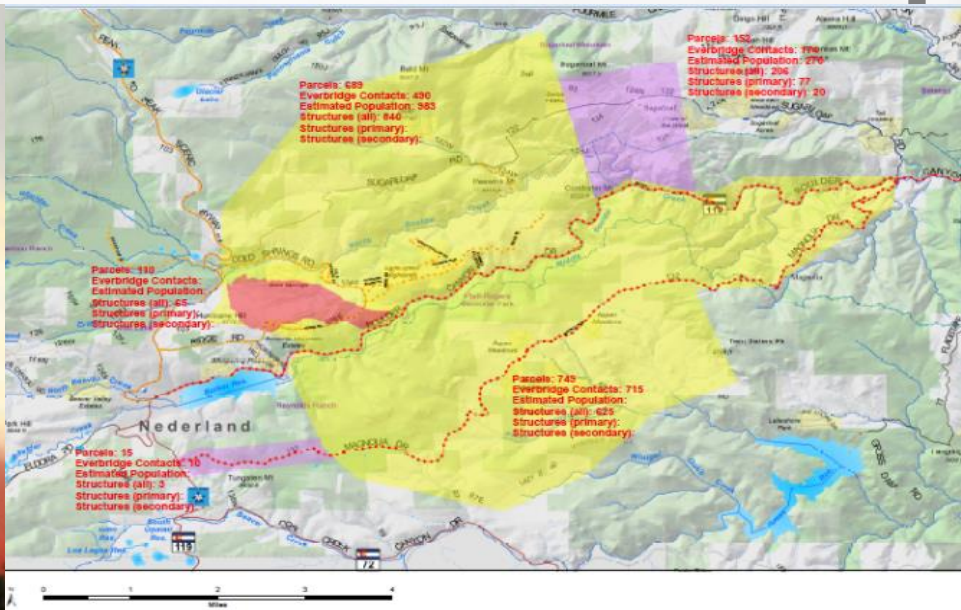
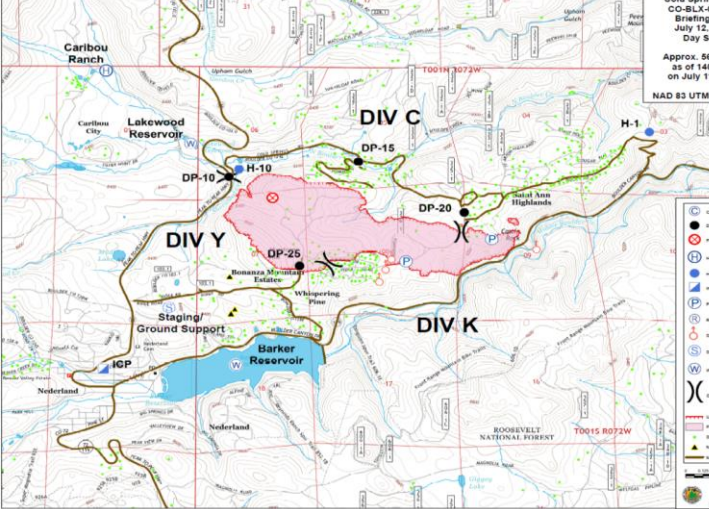




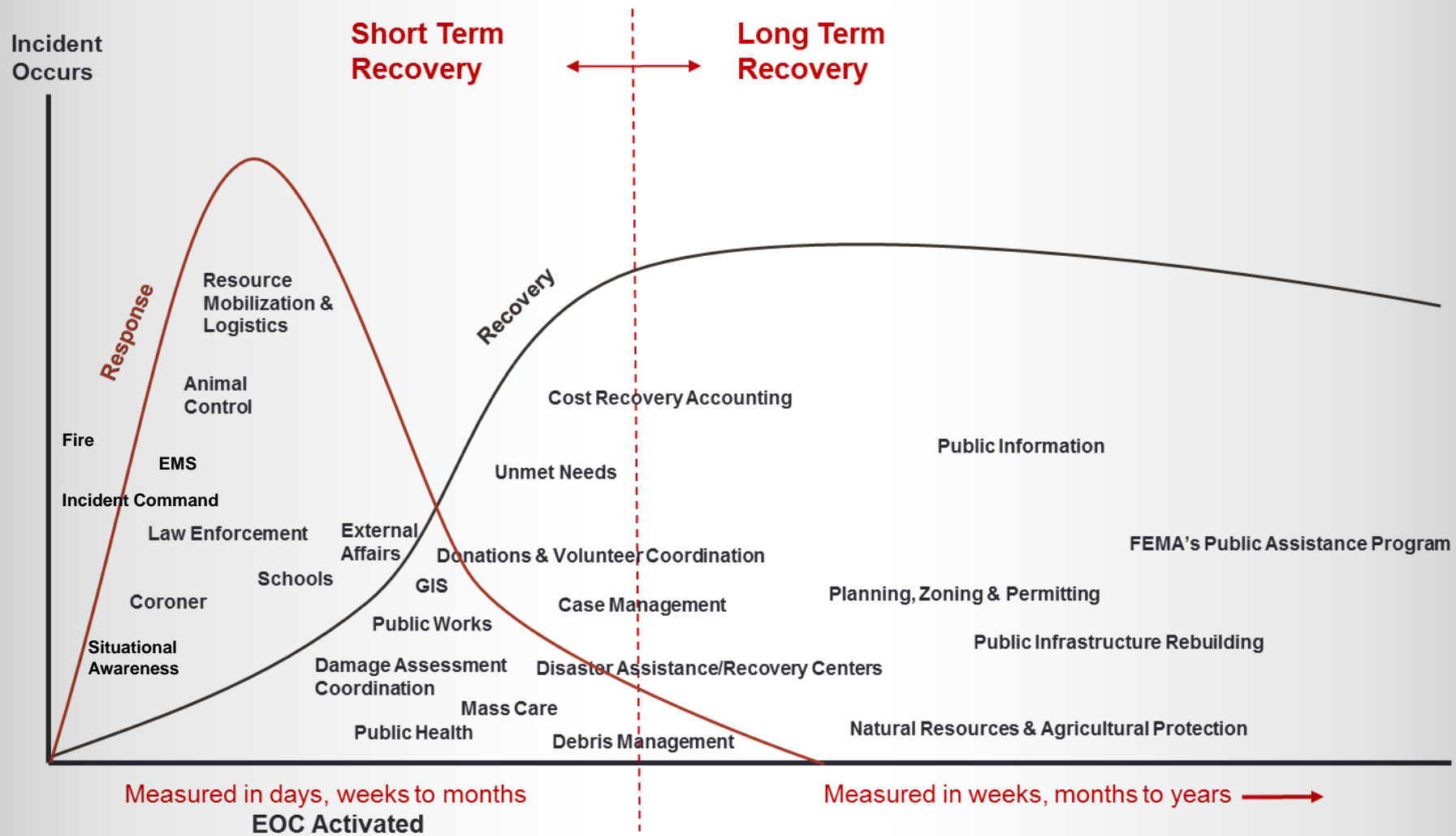
"The two most important  
days in your life are the day  
you are born and the day  
you find out why."

Mark Twain



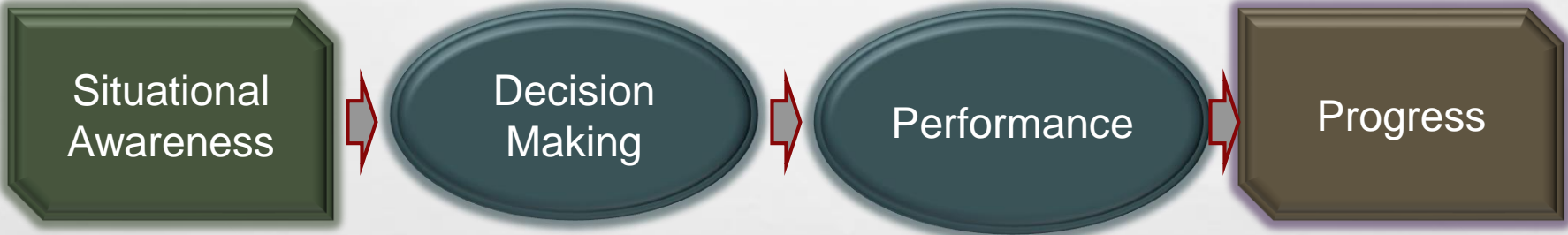








# SITUATIONAL AWARENESS

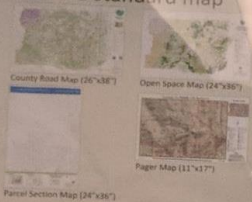


		Process	Outcome
Objective	Tactical – Short Strategic – Long Policy- Longer	Situation Assessment Sense making Understand	Situational Awareness Understanding Predict



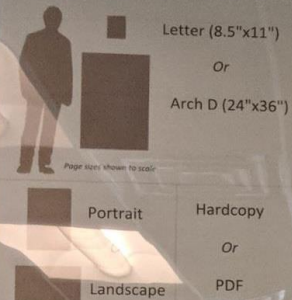
## How to request a map

Fill out a map form and...  
...Choose a standard map

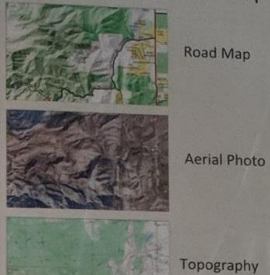


...Or a custom map using the instructions to the right

## Step 1: Pick your format



## Step 2: Pick your basemap



## Step 3: Choose your layers

**Incident Data**

- Access Point \*
- Approximate Incident Location
- Branch Break \*
- Climb To Safety Area
- Collection Point
- Completed Dozer Line \*
- Completed Line \*
- Damage Point \*
- Decontamination
- Dept Operations Center \*
- Disaster Asst. Center
- Distribution Center
- Division Break \*
- Drinking Water
- Drop Point \*
- Evacuation Area
- Evacuation Point
- Evacuation Route
- First Aid Station
- Food
- Incident Area
- Incident Command Post \*

**Information**

- Inoculation Point
- Landing Zones \*
- Morgue
- No Parking
- Origin \*
- Parking
- Pre-evacuation Area
- Prohibited
- Proposed Dozer Line \*
- Restroom
- Road Block
- Road Closure
- Shelter
- Shelter - Closed
- Shelter - Full
- Shelter - Large Animal
- Shelter - Pets OK
- Shelter in Place Area
- Spot Fire \*
- Staging Area \*
- Uncontrolled Fire Edge \*

**Background Data**

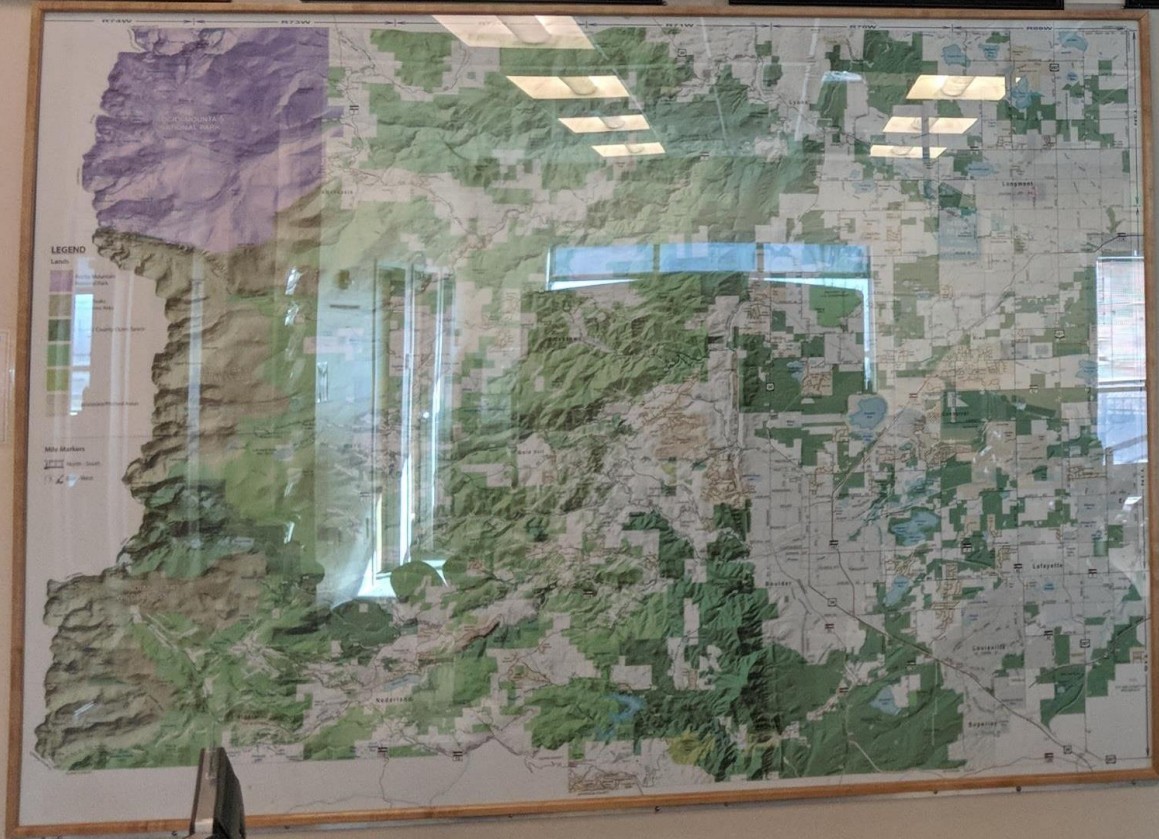
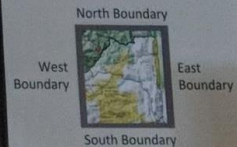
- Address Points
- Airports
- Block Groups
- Block Population
- Boulder Utilities \*
- Boulder Utilities PDS \*
- Bridges
- Building Footprints
- Campgrounds
- Cellar (Prints)
- City Limits
- County Boundary
- Critical Wildlife Habitat
- Dams
- Day-Lakes
- Drivable Trails
- LOC
- Fire Districts
- Fire Stations
- Flood Extent 2013
- Floodplain 10 Year
- Floodplain 25 Year
- Floodplain 50 Year
- Floodplain 100 Year
- Floodplain 500 Year
- High-way Shields
- Historic Wetland Easement
- Howells
- Hydro Subwatershed
- Lakes
- Mile Markers
- Mines
- Mountain Peaks
- Nursing Homes
- Parcels
- PSS
- Police Stations
- Portable Debris Cont. Volumes
- Power Lines
- Public Lands
- Railroads
- Rain Gauges
- Repetitors
- Roads
- Schools
- State Parks
- Stream Gauges
- Streams and Ditches
- Trailheads
- Trails
- Vehicle Gates
- Warning Sirens
- Wildfire Hazard Rating

## Step 4: Area of interest

Boulder County  
Plains  
Mountains  
City of Boulder

Lyons  
Jamestown  
Ward  
Nederland

Or define your own









# LEGEND

## Lands

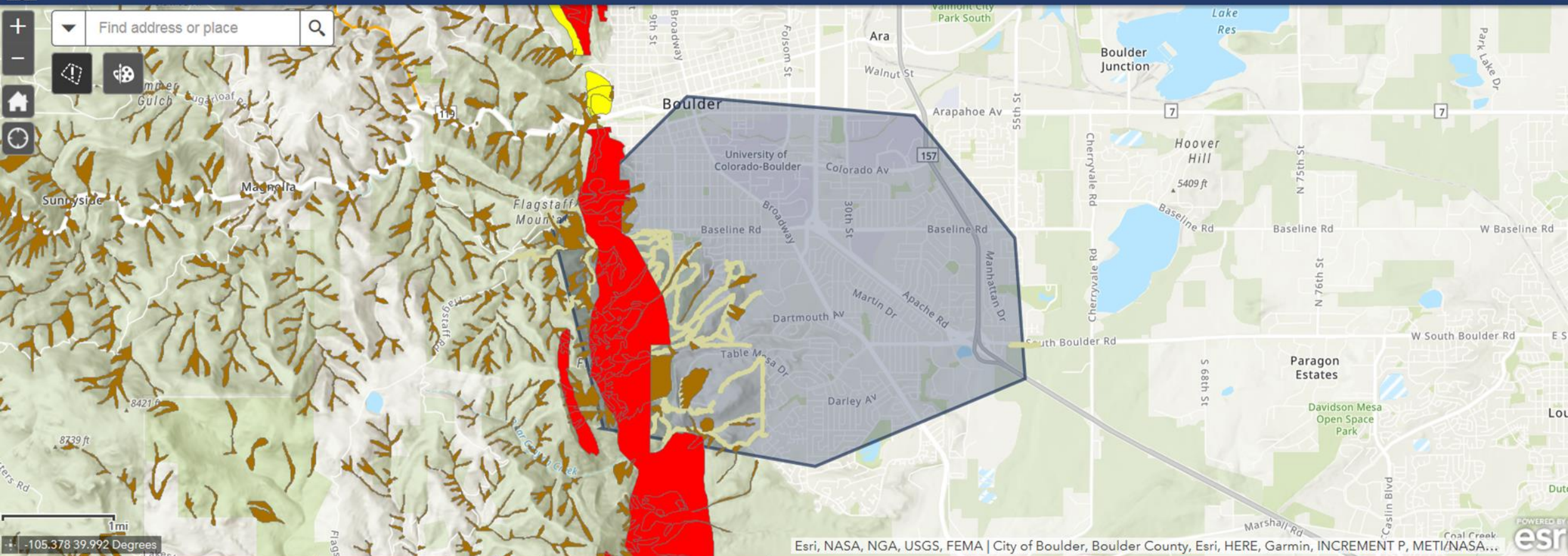
-  Rocky Mountain National Park
-  Inland Forest Wilderness Area
-  City and County Open Space
-  Forest
-  State
-  Subdivided/Platted Area

## Mile Markers

-  North
-  South
-  East
-  West







ters (71)	Historic Buildings (241)	Critical Infrastructure Poi...	Critical Infrastructure Lin...	Water Meters (10,096)	OSMP Public Facilities (2)	OSMP Trails (167)	OSMP Trail Head (6)
Trail Name 1st/2nd Flatiron	Trail Name 6th Street Connector	Trail Name 6th Street Connector West	Trail Name 7th Street Connector	Trail Name 8th Street Connector	Trail Name 9th Street Connector	Trail Name Amphitheater	
3	5	1	1	1	1	5	





# DAMAGE ASSESSMENT



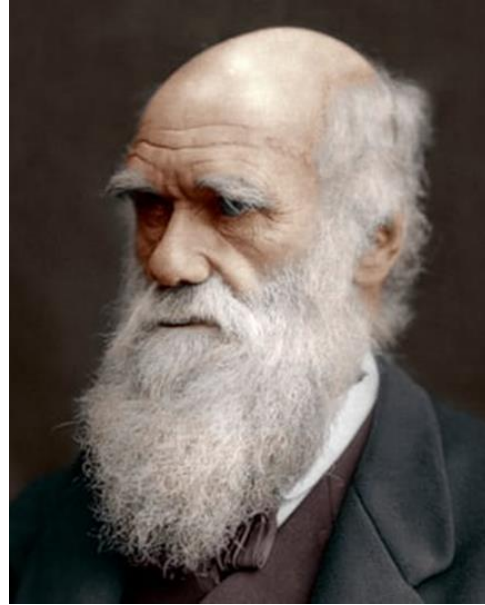


Hard Work Pays Off!

## 2013 Flood







# DARWIN'S LESSON



# THE END



TELEVISION RIGHTS RESERVED