

GEOSPATIAL COORDINATION

Current and Future State of the Union on Preparedness Data

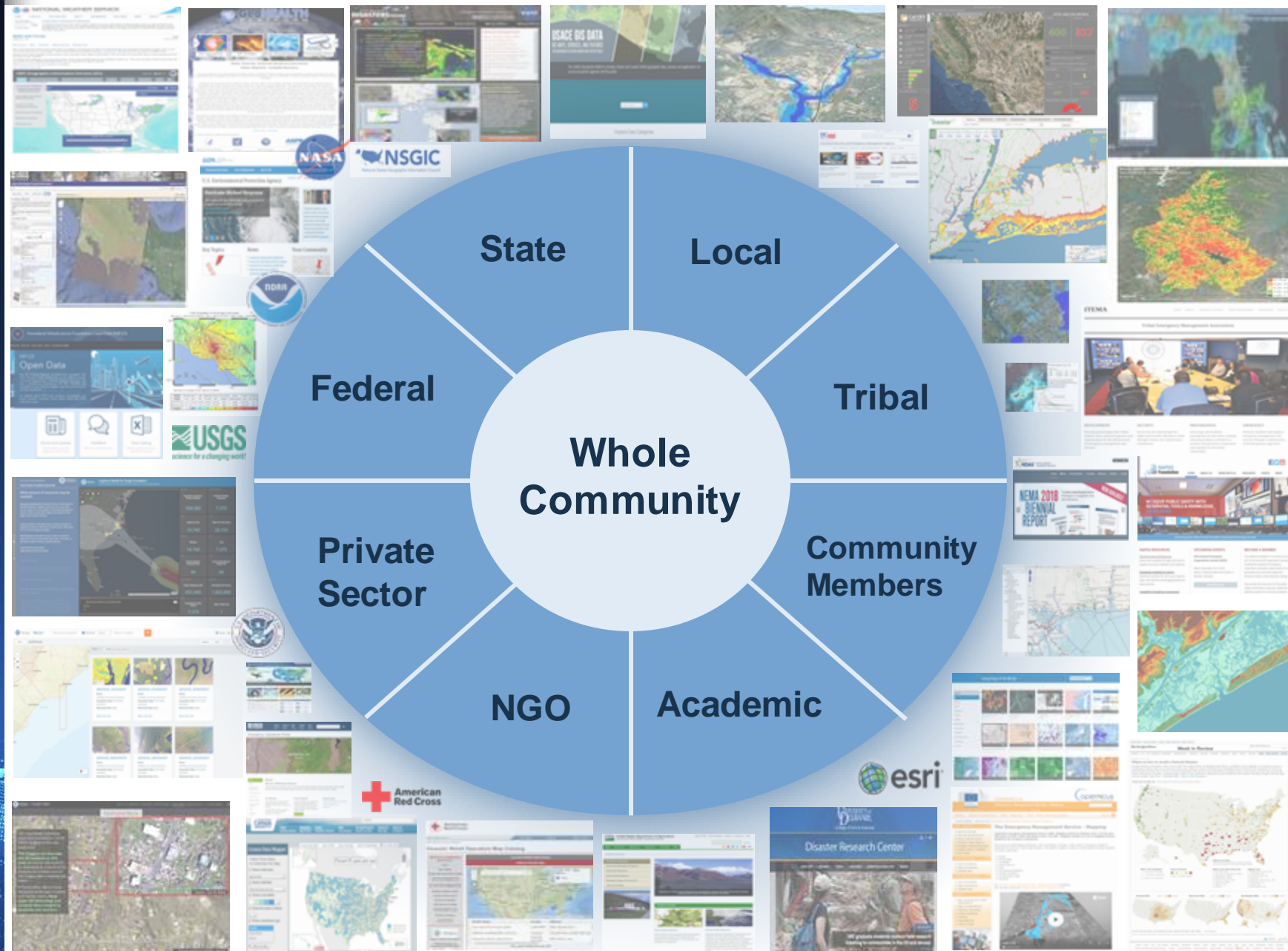
National Geospatial Preparedness Summit
December 2018

Robert Pitts – Project Manager, FEMA Response Geospatial Office

Rebecca Kollmeyer – Geospatial SME, FEMA Response Geospatial Office



Disasters Community



Disasters Coordination

- **FEMA is the federal coordinator for the operational and logistical disaster response needed to save and sustain lives, minimize suffering, and protect property in a timely and effective manner in communities that become overwhelmed by disasters.**



Geospatial Coordination (Past)

FEMA GEOSPATIAL COORDINATION

Conference Bridge: 800-320-4330, Passcode: 132811#

Adobe Connect: <https://fema.connectsolutions.com/geospatialcoordinationcall/>

Tropical Storm Lane
Sunday, August 26, 2019



FEMA

Situation Overview

Tropical Storm Lane (Update as of 5:00 AM EDT)

- Located **195 miles SSW** of Honolulu, Hawaii
- Moving **West at 9 mph**, forward speed expected to increase through Monday
- Maximum sustained winds **40 mph**
- Lane continuing weakening trend over the next few days, likely becoming a post-tropical low on Monday
- Anticipated rain accumulation over the next few days, likely becoming a post-tropical low on Monday
- Localized storm total along the windward

Hazards Affecting Lane

- Lingering moisture at Hawaiian Islands through
- All land base tropical
- Flash Flood Warning will likely continue (N

Response (State / L

- HI EOC downgraded to

(information from 08/26/2019)

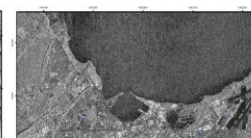
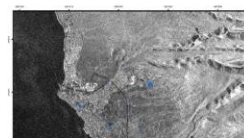
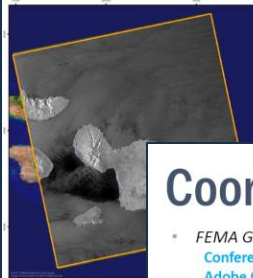


FEMA HQ NRCC Updates

- **General:**
 - NRCC downgraded to Enhanced Watch as of 8:00 AM EDT on 8/26.
- **Production and Modeling:**
 - **Disasters.Geoplatform** page for Hurricane Lane is up: <https://communities.geoplatform.gov/disasters/hurricane-lane/>
- **Built Up Areas** from Oak Ridge National Laboratory (ORNL) web service for the Hawaiian Islands. The dataset has limited attribution. Building Outlines datasets typically:
 - **Web Service:** <https://services.arcgis.com/areas/FeatureServer>
 - **Download:** https://data.femadata.com/eas_OakRidgeNationalLab/



FEMA HQ NRCC



Coordination Calls

- **FEMA Geospatial Coordination Call – Daily @ 2:00 PM (Eastern)**
Conference Bridge: 800-320-4330, Passcode: 132811#
Adobe Connect: <https://fema.connectsolutions.com/geospatialcoordinationcall/>
- **Slides will be posted at the following locations:**
 - <https://data.femadata.com/NationalDisasters/HurricaneLane/Documents/GeospatialCoordinationCallNotes/>
 - <https://communities.geoplatform.gov/disasters/interagency-geospatial-coordination-call-notes/>
- **Register for the FEMA Daily Operations Briefing here:**
https://public.govdelivery.com/accounts/USDHSFEMA/subscriber/new?topic_id=USDHSFEMA_153
- **To be added to the distribution list/calendar invite, please send an email with your name and contact information to:**
 - POC: FEMA-MDWG@fema.dhs.gov

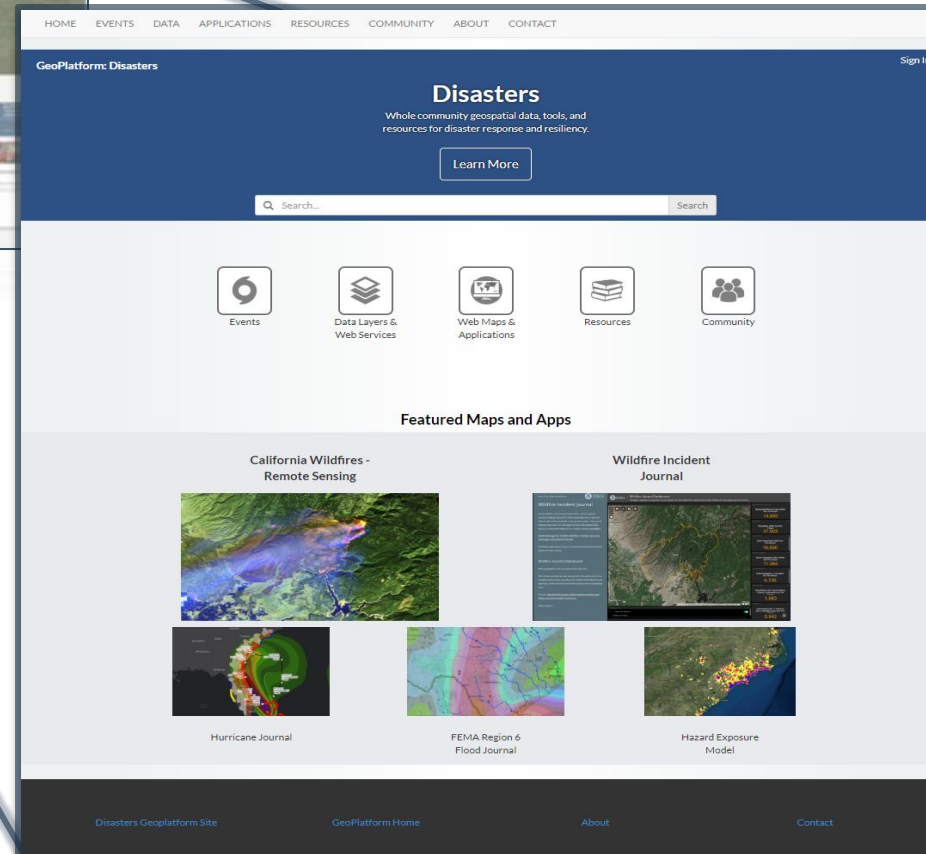
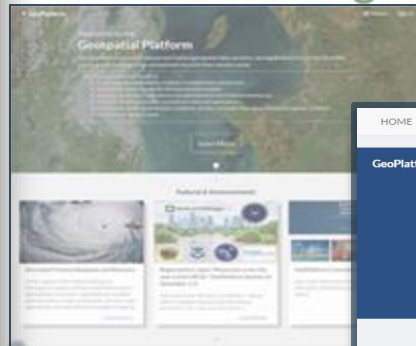
- Only Available to Distribution List Members
- Difficult to Find Specific Data
- Hard to Share

- Daily Calls During Disasters
- FEMA & FSLT Partners
- Review Current Status
- Collect/Document Relevant Data
 - Saved in PDFs with Links
 - Emailed to Partners

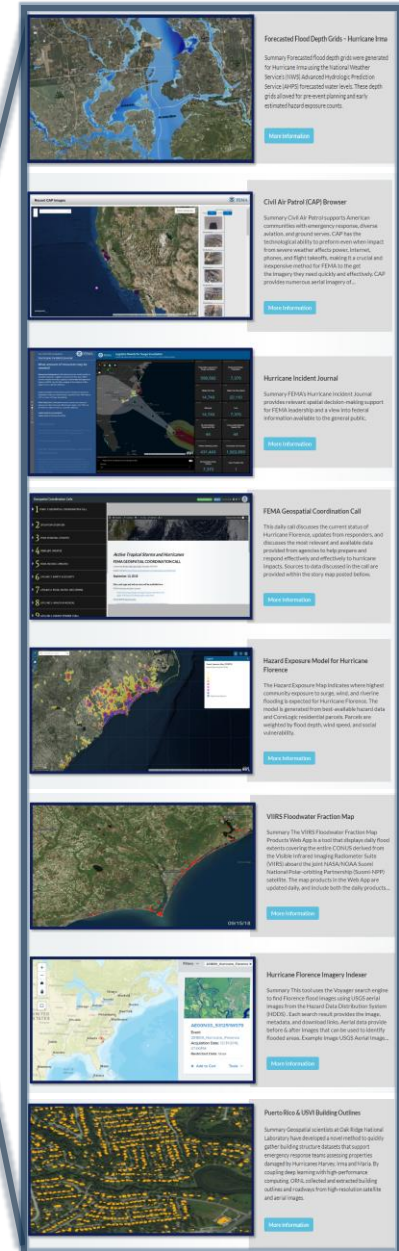
Disasters.GeoPlatform.Gov

5

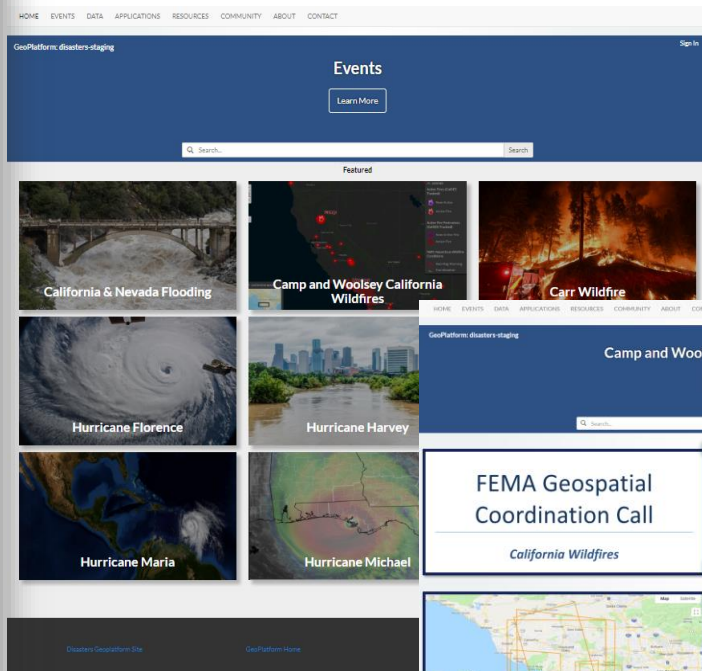
www.GeoPlatform.gov



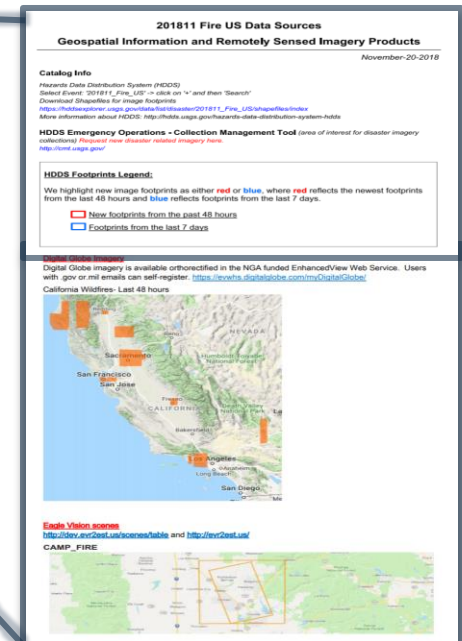
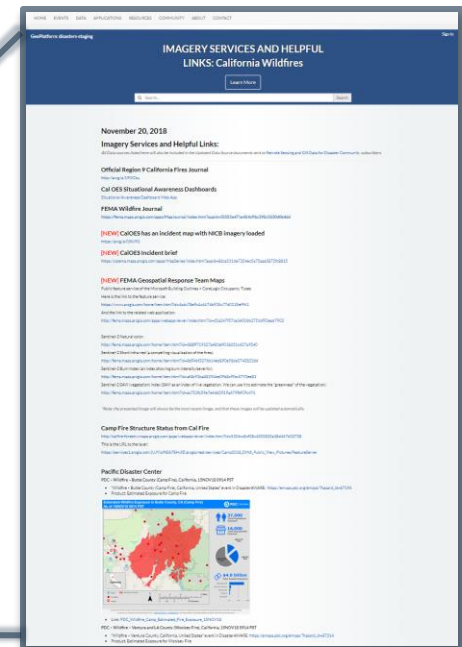
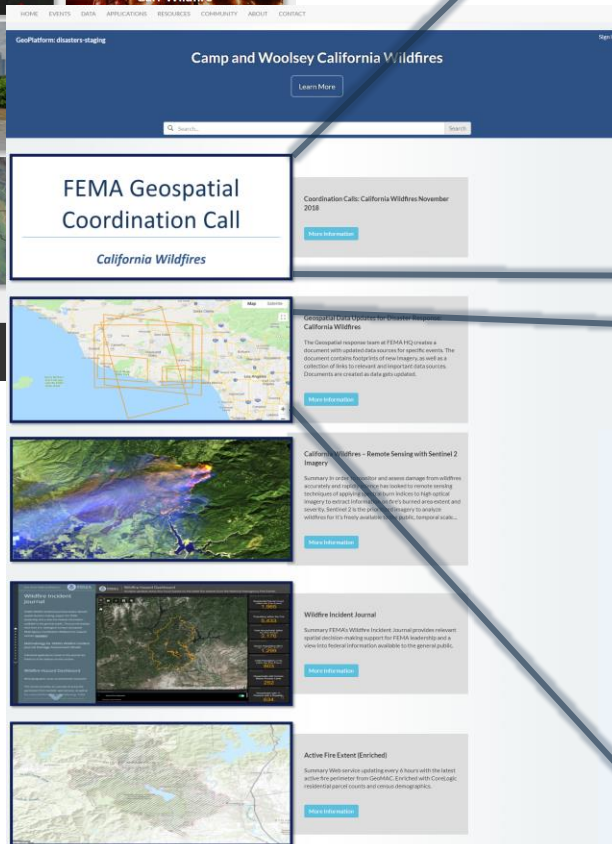
- Unified environment for community partners to publish, share, and access authoritative geospatial data, applications, and resources related to the preparedness, response, recovery, and mitigation of disasters.



Geospatial Coordination (Today)



- Online
- Organized
- Archived
- Searchable
- Shareable



Live Demo

[Disasters.GeoPlatform.Gov](https://disasters.geoplatform.gov)



Disasters.GeoPlatform.Gov

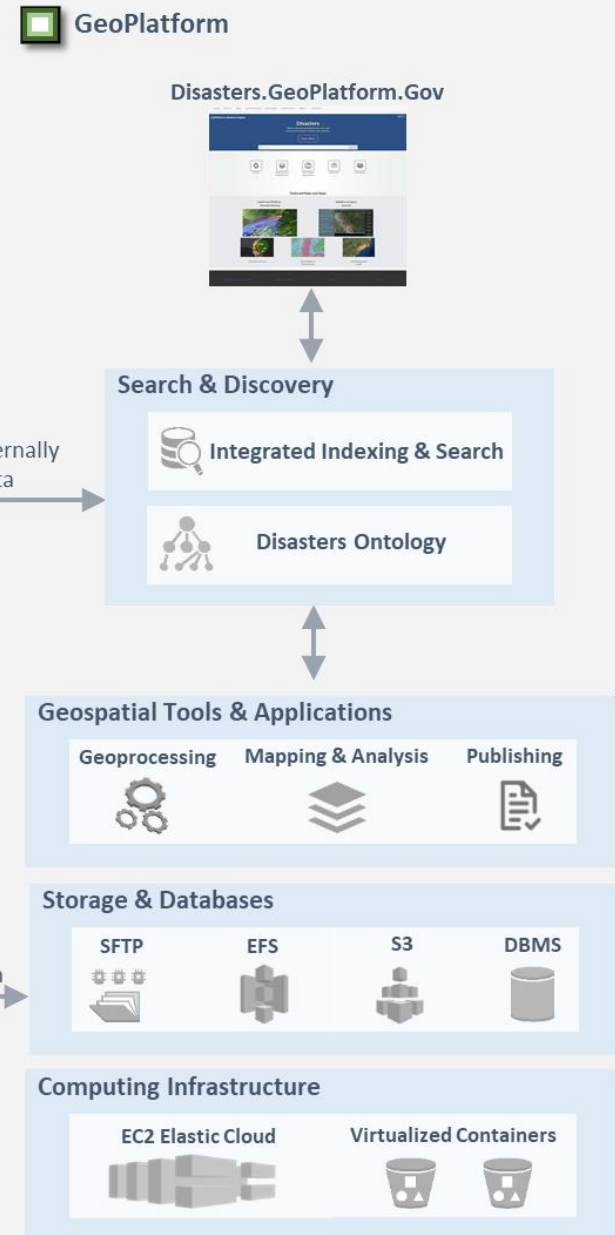
Data Architecture for Future

- Disasters Ontology (based on MoDI)
- Tools for Efficient Publishing & Registering Data
- Unified Search for Disasters Data & Resources
- Search Disasters and Geospatial Data by:
 - Name, Type, Location, Date, etc.



Integration of Externally
Published Data

Publish Directly to GeoPlatform



Inter-agency Coordination

Towards an Integrated Geospatial Disasters Community



Build & Support Disasters Community

- Community Engagement
- Modeling & Data Working Group (MDWG)
- Update Modeling & Data Inventory (MoDI)
- SOPs, How-To Guides, Trainings, Workshops
- Incorporate Community Feedback



Simplify Complexity of Disasters Geospatial Data Discovery, Integration, Use

- Develop Comprehensive Disasters Ontology
- Enable Easier & Automated Partner Data Publishing
- Enhance Website Content, Organization & Display
- Implement Unified Search Function

Thank You!

■ Contact Us

- Modeling Data Working Group: FEMA-MDG@fema.dhs.gov
- Remote Sensing: FEMA-Remote-Sensing@fema.dhs.gov

■ More Information

- Visit Disasters.GeoPlatform.Gov

