

Incident Symbology

Technical Implementation Guidance

Version 4.0

This document provides technical guidance for GIS Professionals to use in implementing NAPSG Foundation’s Incident Symbology Framework, Guideline, and Symbol Sets. Users should first review the [Incident Symbology Framework and Guideline](#) prior to using this document. For background, NAPSG Foundation’s Incident Symbology Framework and Guideline is a set of symbol guidelines for use by all public safety agencies, disciplines, and levels of government.

Contents

Using the NAPSG Foundation Symbology Library	2
Web GIS Software.....	3
ArcGIS Online.....	3
Desktop GIS and Mapping Software.....	4
ArcMap	4
ArcGIS Pro.....	9
Google Earth Pro	13

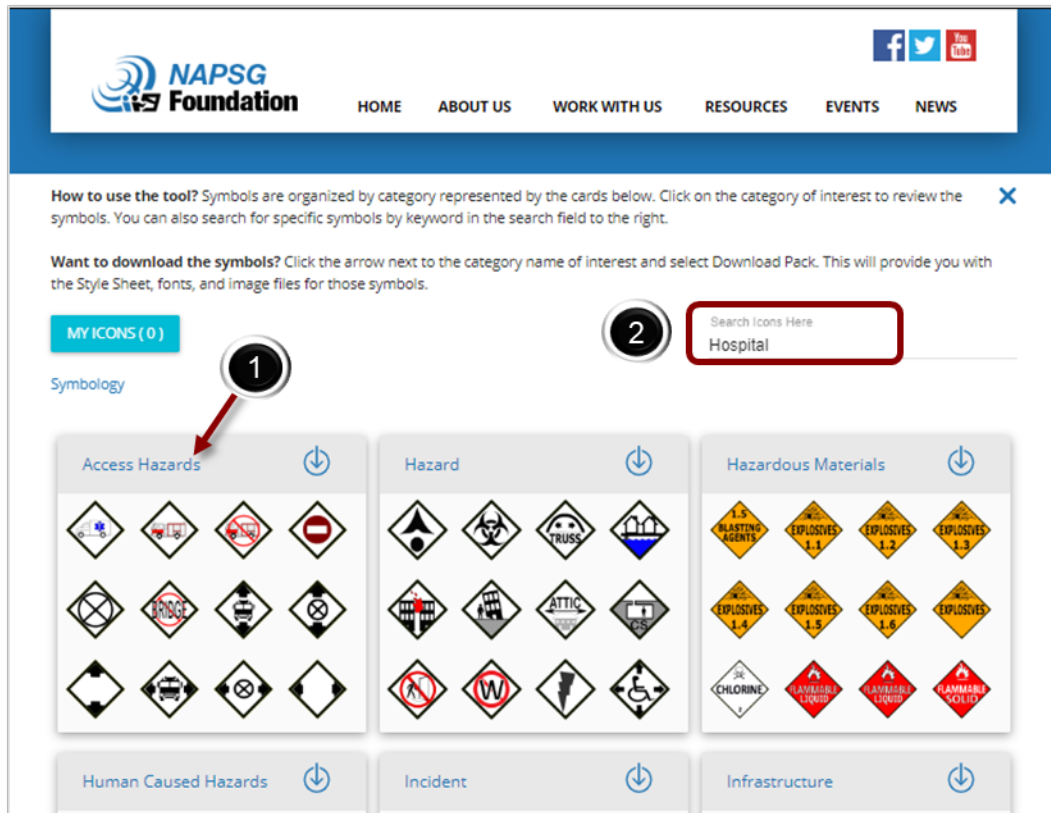
Produced in partnership with Ardent Management Consulting
and with support from: DHS GSA HIFLD Contract No. GS-35F-0212U

Using the NAPSG Foundation Symbology Library

The NAPSG Foundation Symbol Library can be accessed from the Resources tab at www.napsgfoundation.org or directly at the following URL: <http://napsg-web.s3.amazonaws.com/symbology/index.html>

Symbols are organized by category represented by the cards below.

1. Click on the category of interest to review the symbols.



2. You can also search for specific symbols by keyword in the search field to the right.

If you experience a technical issue with the tool please send us an email at symbol@publicsafetygis.org that describes the technical issue you experienced.

Produced in partnership with Ardent Management Consulting
and with support from: DHS GSA HIFLD Contract No. GS-35F-0212U

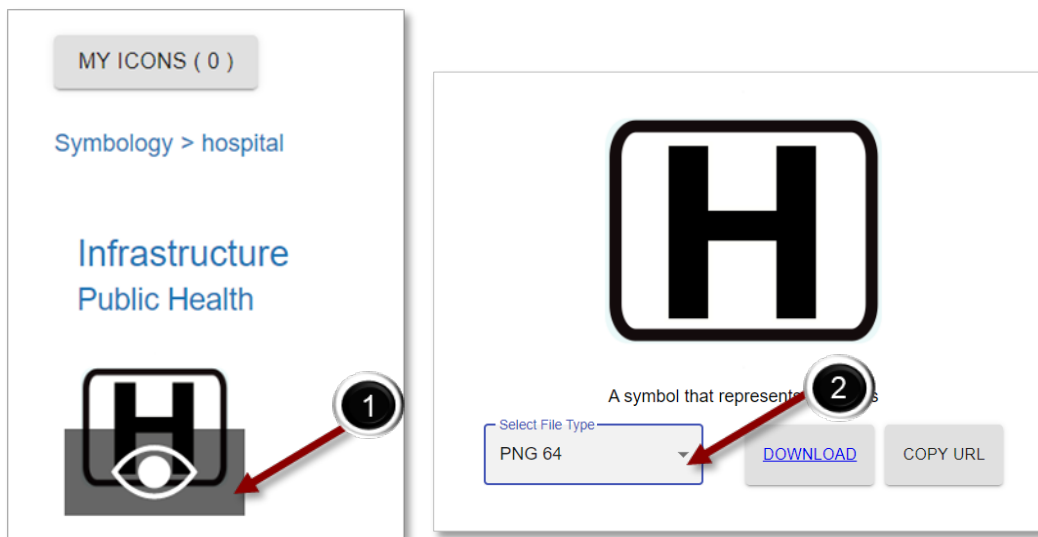
Web GIS Software

The easiest way to get started with the Symbol Library tool is by simply using the hosted symbols. This means accessing the web address or URL of each icon and link to your layers in online maps. Once you have copied a URL, this can be used by any web services that can incorporate hosted symbols into their display.

Once you have identified a symbol you want to use (e.g., search for hospital), follow these simple steps below:

1. Click on the preview button for a symbol. This takes you to the symbol page where you can choose between a variety of formats.
2. Select your file type and size. For web maps symbology, PNG 64 works well. Click on the button for PNG 64.
3. Select Download to use the image locally Or, 'Copy URL' to dynamically link to the symbol in web maps.

https://s3.amazonaws.com/naps-g-web/symbology/data/PNG6/infrastructure/CRTINS_PUBHTH/Hospitals_64x64.png

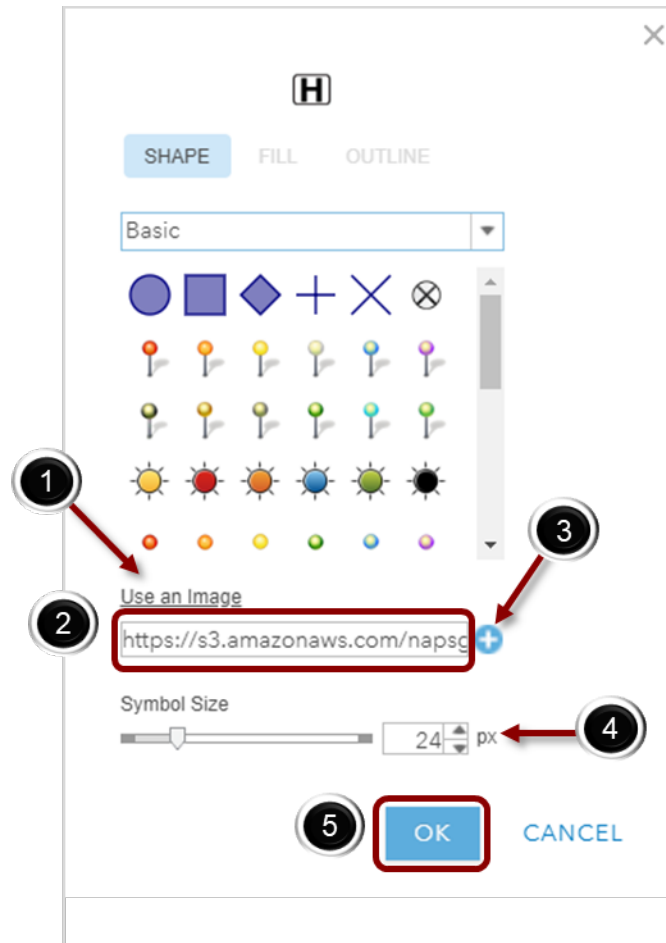


ArcGIS Online

To get started using hosted symbology in your web maps, access any ArcGIS Online web map and follow the steps outlined in [Change Style workflow](#). This can be done via the Visualization Tab of a feature layer you own or in the Web Map Viewer itself.

Once you have access to the **Change Style** panel, follow the steps below.

1. Click **Use an Image**
2. Paste (**Ctrl + V**) in the URL from the symbol you have chosen.
3. IMPORTANT: Click on the + icon to enable the symbology.
4. For most HIFLD Symbology a size of 24 pixels works well.
5. Click OK when you are done.



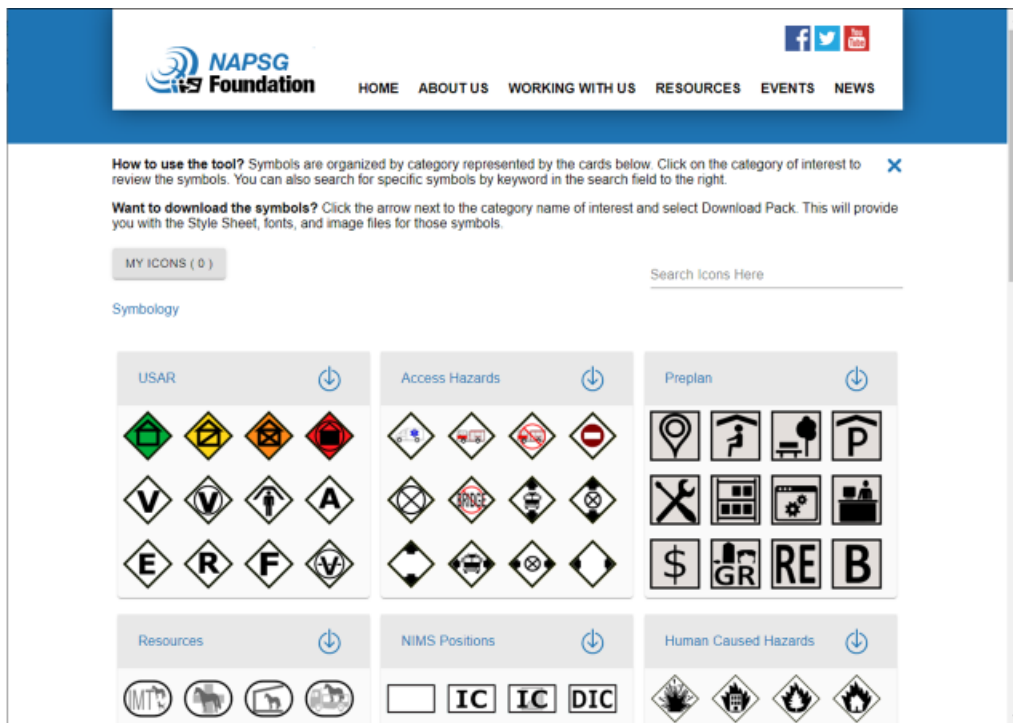
Desktop GIS and Mapping Software

ArcMap

The NAPSG Foundation Symbol Library can be accessed from the Resources tab at www.napsgfoundation.org or directly at the following URL: <http://napsg-web.s3.amazonaws.com/symbology/index.html#/>

Symbols are organized by category represented by the cards below. Click on the category of interest to review the symbols. You can also search for specific symbols by keyword in the search field to the right. If you experience a technical issue with the tool please send us an email at symbol@publicsafetygis.org that describes the technical issue you experienced.

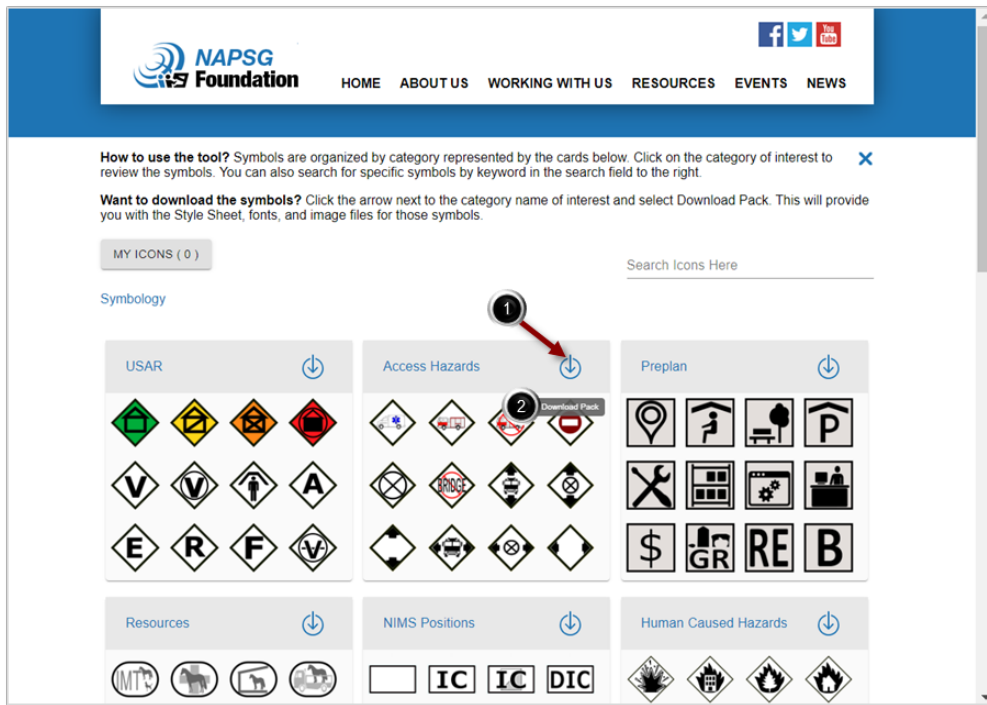
Below is a short tutorial on how download symbol packs, install in ArcMap, use hosted symbols, and access the .png files individually.



1.1 Pick a Symbol Set and Download the Pack

1. Click the **Options** icon.
2. Click on **Download Pack**.

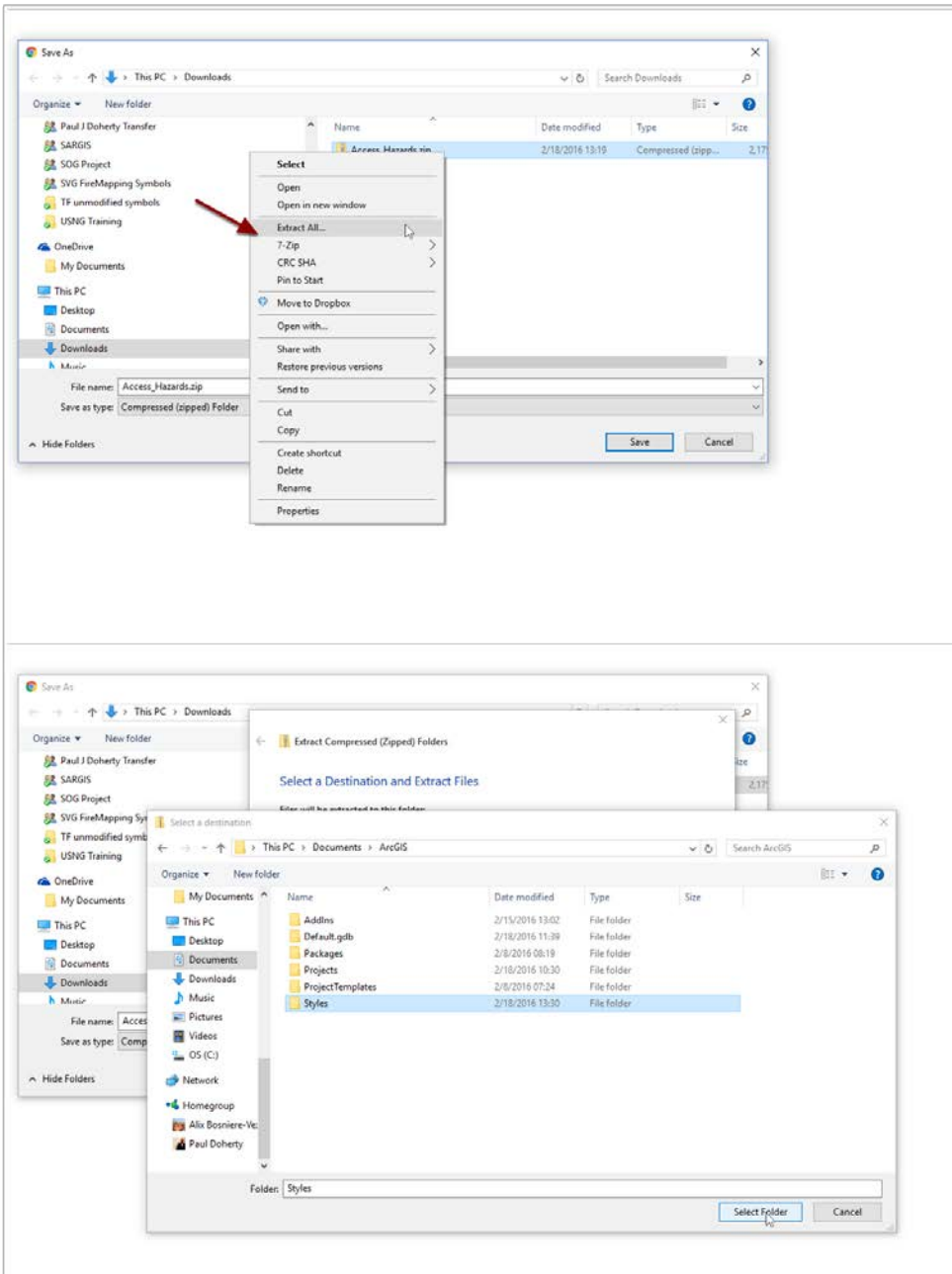
Produced in partnership with Ardent Management Consulting
and with support from: DHS GSA HIFLD Contract No. GS-35F-0212U



1.2 Unzip the Folder

Unzip the folder in a place designated for your Styles - remember where this location is. Now is a good time open ArcMap so it is loaded in time when you finish the next step. **Repeat this step** for all the symbol packs you would like.

Produced in partnership with Ardent Management Consulting
and with support from: DHS GSA HIFLD Contract No. GS-35F-0212U

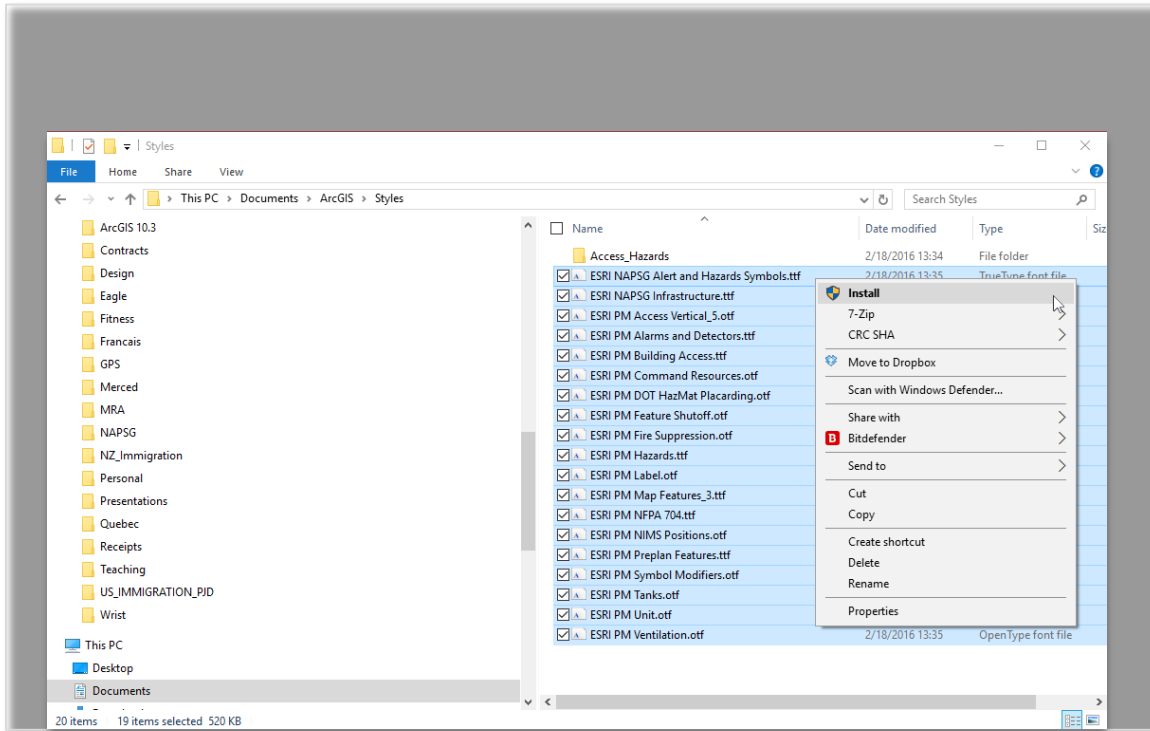


1.3 Install the True Type Font

You only need to complete this step ONE TIME.

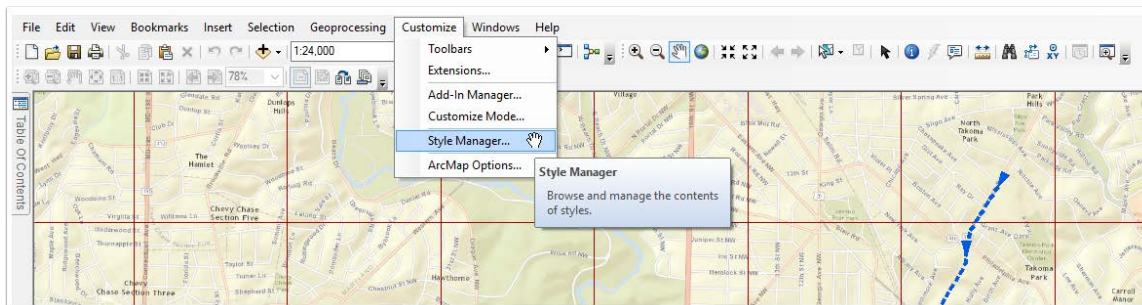
1. Within the folder you downloaded, unzip the NAPSG Fonts folder. Your style folder is a good place for this, all the True Type Fonts (TTF) for all symbols will be in there.
2. Highlight all the fonts. Right-click and Install.

Produced in partnership with Ardent Management Consulting
and with support from: DHS GSA HIFLD Contract No. GS-35F-0212U



2.0 Install in ArcMap

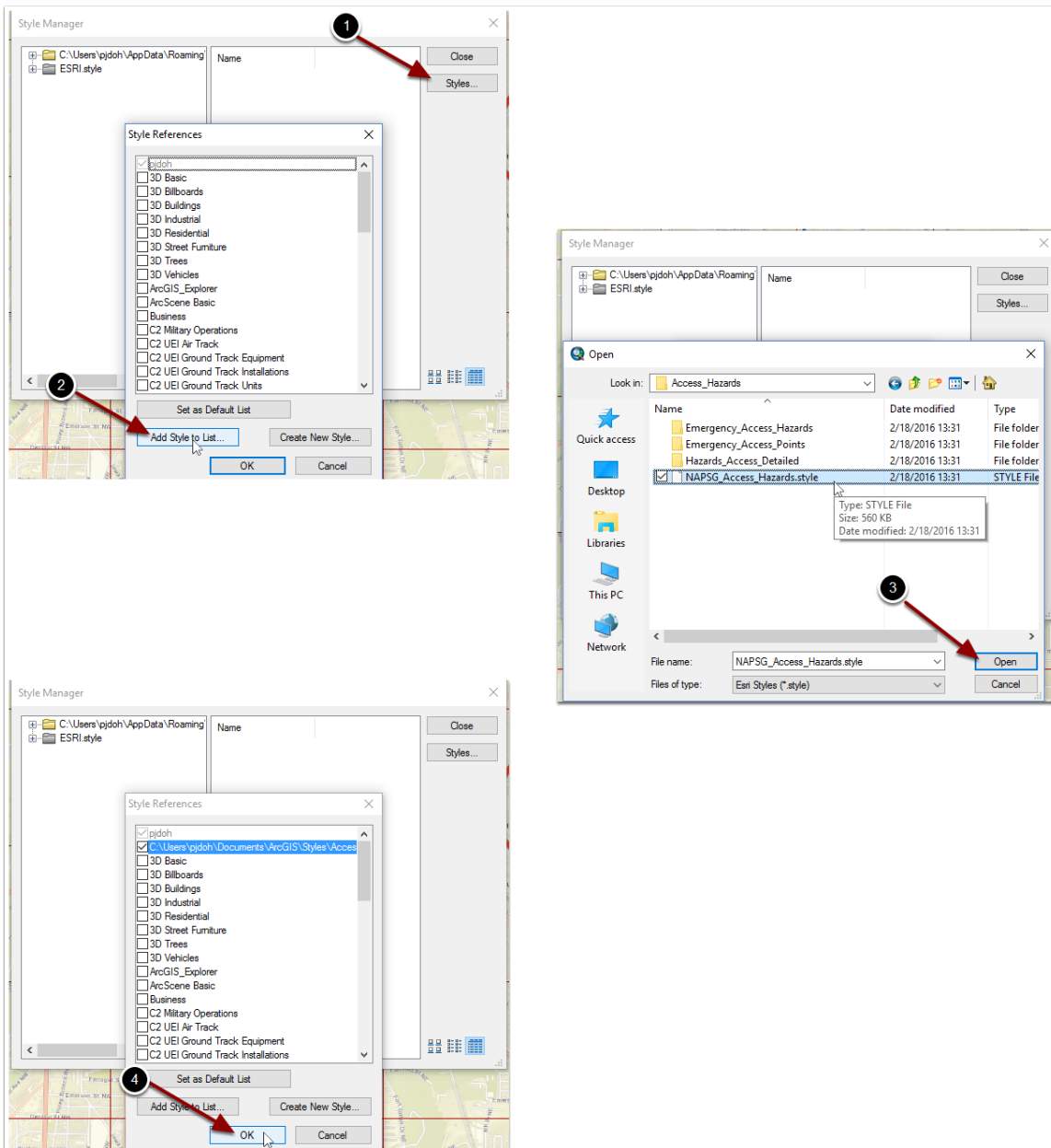
Open ArcMap. Go to Customize --> Style Manager



2.1 Style Manager

1. Click on **Styles...**
2. **Add Style to List**
3. Browse for your style in the designated location (I told you not to forget this location) - highlight it and click **Open**.
4. Verify it has been added to your Style References - click **OK**. Close the Style Manager.

Produced in partnership with Ardent Management Consulting
and with support from: DHS GSA HIFLD Contract No. GS-35F-0212U



ArcGIS Pro

Follow Steps 1.1 -1.2 above for ArcMap. The below steps pick up after you have picked a Symbol Set (For Example, 'Infrastructure'), downloaded the Pack, and extracted the files. Remember to unzip the folder in a place designated for your Styles and repeat for each symbol set group desired.

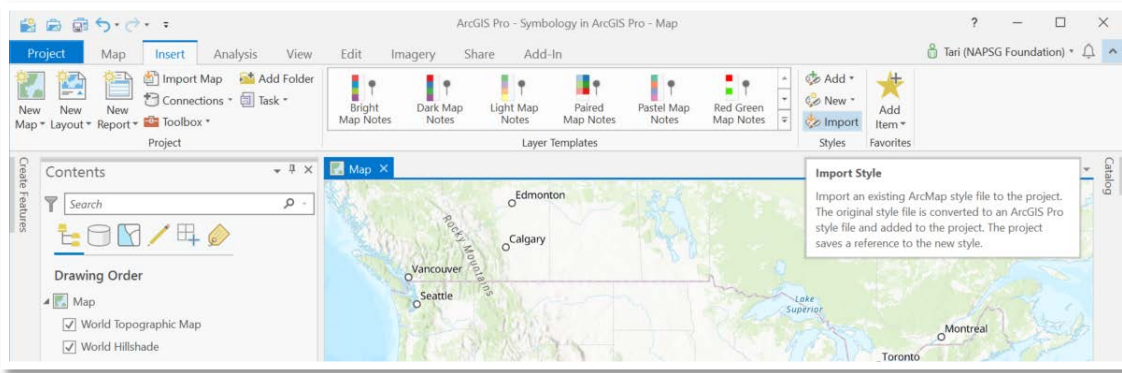
1.0 Launch ArcGIS Pro

Users new to ArcGIS Pro can find resources for getting started and accessing training tutorials in the online help documentation here: <https://pro.arcgis.com/en/pro-app/get-started/get-started.htm>.

Produced in partnership with Ardent Management Consulting
and with support from: DHS GSA HIFLD Contract No. GS-35F-0212U

1.1 Add NAPSG Incident Symbology Styles

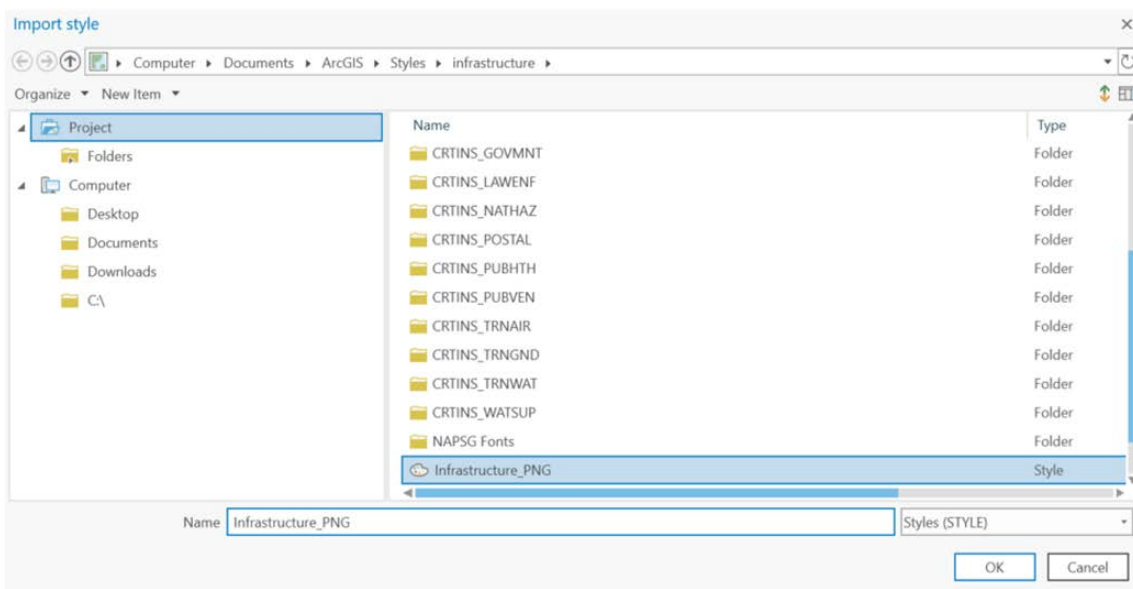
1. Create a New or Open and Existing Project.
2. Under the **Insert Tab**, in 'Styles', select **Import**.



3. Navigate to the folder you saved to earlier. Open the folder for the style you want to add, Select the Style file, and hit **OK**.

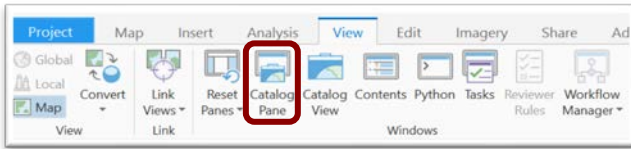
NAPSG provides two different Style Options: *CategoryName_PNG* (pictures) and *CategoryName_TrueType* (True Type Fonts). Add both styles to your Pro Project in the same manner. We will review the differences of the two styles in the steps below.

*Note – All Categories have PNG's, SVG's, TTF's and a PNG Style. True Type Font Styles are under development and are not yet available for all categories.



4. Verify that your style has been added to your project by expanding the Styles in the **Catalog Pane**. The Catalog Pane can be added to your window under the **View Tab** in the main menu.

Produced in partnership with Ardent Management Consulting
and with support from: DHS GSA HIFLD Contract No. GS-35F-0212U



1.3 Explore Symbology Styles

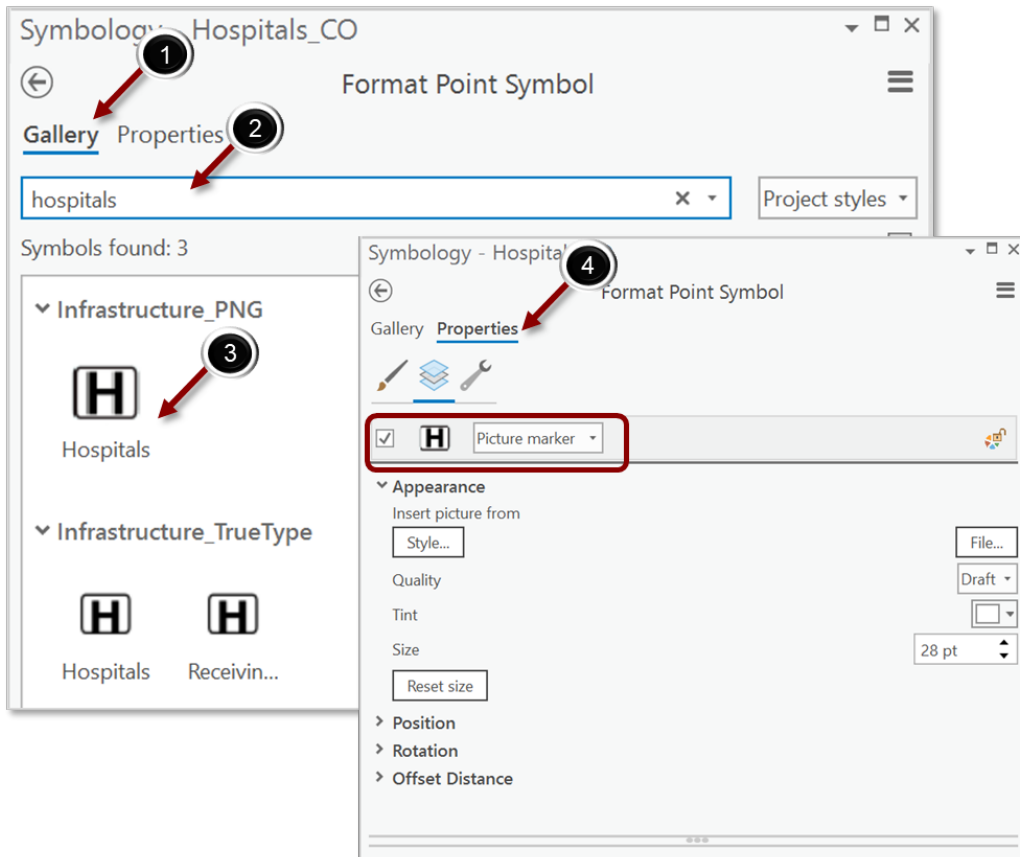
Next, we'll add symbology from both styles to a point layer in our map and review their differences. For this example, we have extracted Hospitals from the HIFLD Open for the state of Colorado. **Note: Many HIFLD data layers are already symbolized using NAPSG standard incident symbology by default.**

1. Select a point data layer in the **Table of Contents**.

Remember commands and tool in ArcGIS Pro are located in contextual ribbon tabs. These options become available based on what view you have active or have currently selected. With your point layer selected, click on the Appearance tab under Feature Layer. All the styles you have available to you for this Pro Project are listed under the Gallery Tab (open by default).

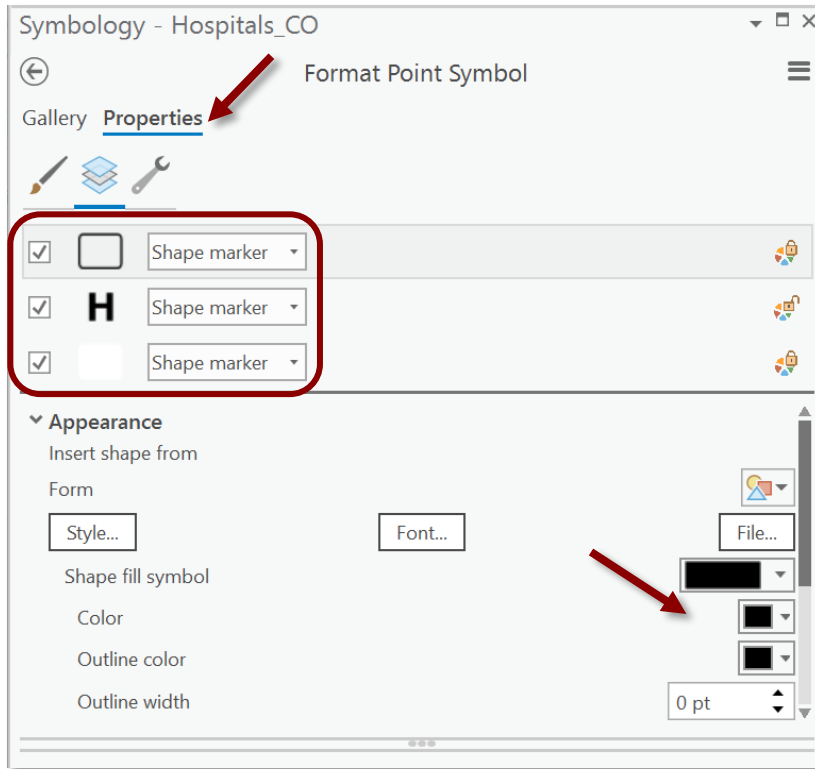
2. Search "hospitals" to filter the available symbols and hit **Enter**.
3. First, we will explore adding Infrastructure_PNG. **Select** the Hospital Symbol under the Infrastructure_PNG style.
4. With the Dialog box still open, **Select** the **Properties Tab**. As expected, the symbol is listed a picture file. Some limited options for changing the symbol exist. Size, rotation, and tint, for example. In many cases these options may be more than enough.

Produced in partnership with Ardent Management Consulting
and with support from: DHS GSA HIFLD Contract No. GS-35F-0212U

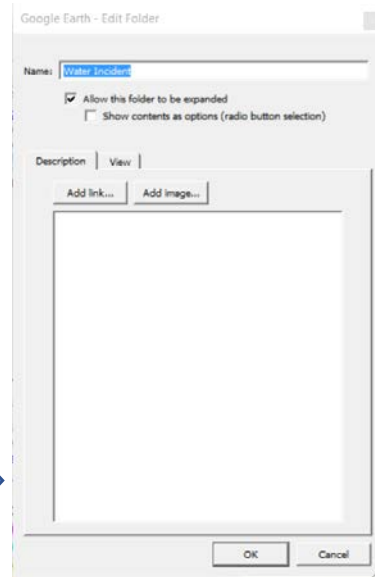
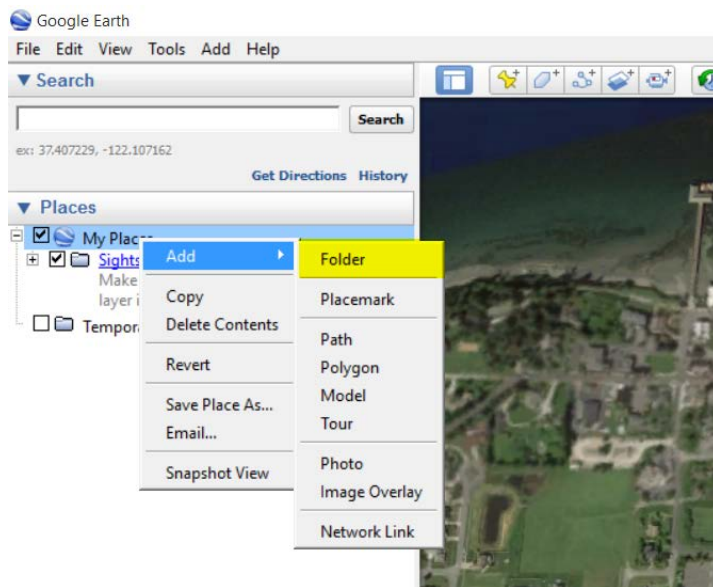


5. Next, we will explore the Hospital symbol available in the True Type Font Style. With the Dialog Box still open, select the **Gallery Tab** then the Hospital symbol in the Infrastructure_TrueType style.
6. Select the **Properties Tab** and view the options available with the true type style. This option gives you additional flexibility for changing the components of the Symbol. The frame, the color background, and the Icon itself. This option may be particularly for adding modifiers, changing colors, or adding in your own standard icon into one of the reserved shapes.
7. The Frame, Icon, and Background can be modified individually when selected in the Format Point Symbol properties tab.

Produced in partnership with Ardent Management Consulting
and with support from: DHS GSA HIFLD Contract No. GS-35F-0212U



Google Earth Pro

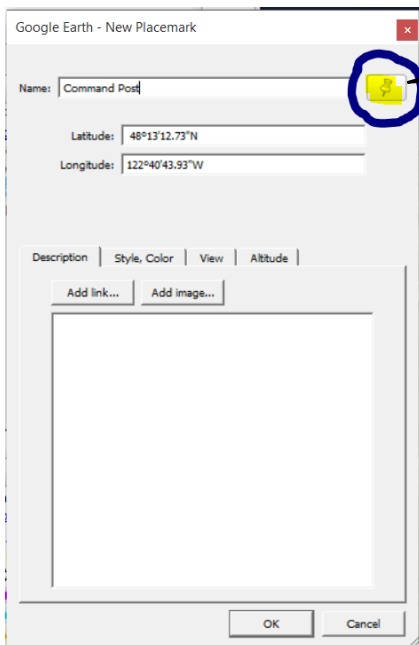


Next add a **PLACEMARK (Point)** to the map

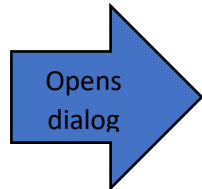
Produced in partnership with Ardent Management Consulting
and with support from: DHS GSA HIFLD Contract No. GS-35F-0212U

A placemark will be added to the center of the map. Move placemark with mouse to desired location.

Produced in partnership with Ardent Management Consulting
and with support from: DHS GSA HIFLD Contract No. GS-35F-0212U



Click button to change icon



Opens dialog



Click to change icon

Add url to image from web site or click browse to find image to use as icon

