

# NAVIGATING THE **FLAMES**

Unlocking the Power of GIS for the Local Fire Service



**LUCAS LYONS**

Systems Performance Analyst

**CHARLOTTESVILLE  
FIRE DEPARTMENT**



**PUSHPA JHA**

GIS Analyst

**CHARLOTTE  
FIRE DEPARTMENT**



**KAT BOYLE**

Management Analyst

**CHARLOTTE  
FIRE DEPARTMENT**



**CHIEF JEFF DULIN**

Strategic Advisor

**INT'L ASSOCIATION  
OF FIRE CHIEFS**



# InSPIRE

Innovation Summit for  
Preparedness & Resilience

## **Navigating the Flames: Unlocking the Power of GIS for the Local Fire Service**

---

## Objective

Explore how and why Charlottesville Fire Dept. created a GIS neighborhood risk assessment





# Charlottesville Fire Department



# Community Risk Assessment

- Demographic profile
- Weather patterns
- Transportation
- Special hazards
- Built environment



# The right people for the job...



Joe Powers,  
Former CFD  
Deputy Chief of  
Community Risk  
Reduction



→ Doug  
Caldwell, GIS  
volunteer



# It All Started with a Story Map...

The screenshot shows a web-based Story Map interface. At the top, there is a navigation bar with buttons for 'Design', 'Preview', 'Publish', and a red fire icon. Below this is a header for 'Neighborhood Risk Assessment' with a fire icon. A secondary navigation menu includes 'THE CITY', 'AREA CHARACTERISTICS', 'DEPARTMENT', 'DEPLOYMENT', 'HISTORY', 'CITY PROFILE', 'NEIGHBORHOOD RISK', 'INCIDENT RESPONSES', and 'COMMUNITY FEEDBACK'. The main content area is titled 'THE DEPARTMENT' and contains two paragraphs of text. To the right of the text is a map of Charlottesville, Virginia, showing fire service areas in blue and red dots representing fire incidents. The map includes a scale bar and a legend.

## THE DEPARTMENT

The Charlottesville Fire Department provides fire and other emergency services to residents and visitors to the City of Charlottesville and the University of Virginia. The department also provides contractual fire and emergency services support to the County of Albemarle.

Daily, the Charlottesville fire department operates out of 3 city fire stations staffing a combination of 4 fire engines, two aerial devices, two ALS transport ambulances, a fire marshal, and a chief officer in a command vehicle. CFD staff suppression apparatus with a minimum of three, medics with two. Both the battalion chief and CRR captains ride as single resources.



# Nuts and Bolts of CFD's Neighborhood Risk Assessment Hub Site





# IAFC

International Association of Fire Chiefs



## IAFC GIS Toolkits

NAPSG INSPIRE

# Two Examples

Wildfire Evacuation Planning

Volunteer Firefighter Recruitment &  
Retention





# Wildfire Problem

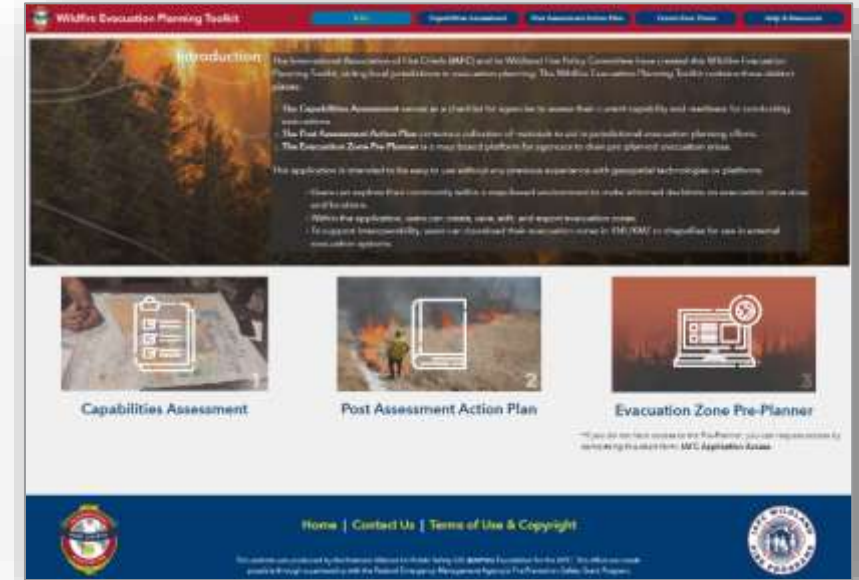
- Wildfire threats to communities continue to grow.
- Communities are moving closer and into the WUI.
- As such, more people are needing to be evacuated in shorter periods of time, more frequently as the fires are growing larger and more common.
- Rural communities often lack access to innovative technologies.



# Evacuation Planning Toolkit Vision

An interactive web-based **Wildfire Evacuation Planning Toolkit** (targeted to rural departments with limited resources) to aid local jurisdictions in evacuation planning. The Evacuation Planning Toolkit allows users to:

- 1) Assess their current capabilities  
(Wildfire Evacuation Capability Assessment)
- 1) View evacuation resources and create a post-assessment action plan  
(Post Assessment Action Plan)
- 2) Explore their community within a map-based application to create evacuation zones  
(Evacuation Zone Pre-Planning Application)



# Wildfire Evacuation Capability Assessment

- The Wildfire Evacuation Capability Assessment serves as a checklist for agencies to assess their current capability and readiness for conducting evacuations.
  - Online (Survey123) & PDF download walks an agency through the Planning, Organizing, Equipping, Training, and Exercising (POETE) process as it pertains to evacuation planning.
  - Developed by the stakeholder group, with input from the broader IAFC Wildfire community, to determine items to be included in the capability assessment.





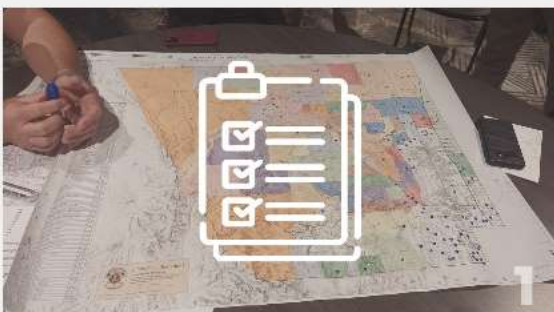
# Introduction

The International Association of Fire Chiefs (IAFC) and its Wildland Fire Policy Committee have created this Wildfire Evacuation Planning Toolkit, aiding local jurisdictions in evacuation planning. The Wildfire Evacuation Planning Toolkit contains three distinct pieces:

1. **The Capabilities Assessment** serves as a checklist for agencies to assess their current capability and readiness for conducting evacuations.
2. **The Post Assessment Action Plan** contains a collection of materials to aid in jurisdictional evacuation planning efforts.
3. **The Evacuation Zone Pre-Planner** is a map-based platform for agencies to draw pre-planned evacuation areas.

This application is intended to be easy to use without any previous experience with geospatial technologies or platforms.

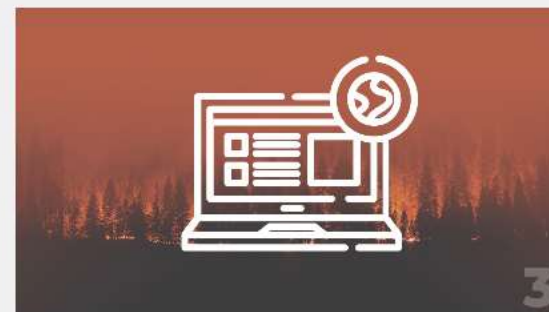
- Users can explore their community within a map-based environment to make informed decisions on evacuation zone sizes and locations.
- Within the application, users can create, save, edit, and export evacuation zones.
- To support interoperability, users can download their evacuation zones in KML/KMZ or shapefiles for use in external evacuation systems.



### Capabilities Assessment




### Post Assessment Action Plan



### Evacuation Zone Pre-Planner

\*If you do not have access to the Pre-Planner, you can request access by completing this short form: [IAFC Application Access](#).

# Capabilities Assessment



## Wildfire Evacuation Capability Assessment

The IAFC Wildland program created the Wildfire Evacuation Capability Assessment to serve as a checklist for your agency to assess its current capability and readiness for conducting evacuations during a wildfire. This checklist may take time to work through and is not intended to be all-encompassing but rather a starting point for the evacuation-planning process.

General Information

Name: Chief Firefighter

Email Address:

Address:

Phone Number:

Risk Assessment

All communities have some level of risk when it comes to wildfires. It is incumbent upon fire service leaders to objectively evaluate that risk, to properly prepare their responders and the community they serve.

1. Have you conducted a risk assessment for your community within the past 5 years?  
Yes  No
2. Have you identified at-risk populations within your community?  
Yes  No
3. Have you identified critical infrastructure within your response area that may have extended evacuation times?  
Yes  No
4. Has your jurisdiction located critical infrastructure aligned to the community business construct for your risk assessments?  
Yes  No

## Relationships

As you begin this process, it is imperative that you have all the right partners at the table. Every jurisdiction is different in its approach to evacuations; however, the following list of possible partners should be considered.

**Traditional**

- Neighboring fire jurisdictions
- Law enforcement (local, state, county)
- Emergency management
- Land management agencies (NPS, BLM, BIA, USFS, State, etc.)
- Bureau of Reclamation
- Tribal Partners

**Non-Traditional**

- Public works
- Planning/zoning/code enforcement
- Water departments/irrigation districts
- Key private landowners
- Homeowners/Neighborhood Associations
- Community Wildfire Protection Plan (CWPP Partners)
- Interested/invested citizens - community advocates
- Utilities
  - Gas
  - Pipeline
  - Electric
- National Resources Conservation Service (NRCS)/conservation districts
- School districts
- 4H/cooperative extension service/animal control
- Fish and Wildlife - state and federal
- DOT/highway/roads
  - Identify agency contacts and process for requesting modifications of traffic and/or closures.
  - High-risk/vulnerable areas
- Non-governmental organizations (NGOs) like The Nature Conservancy (TNC)
- Universities - fire modeling programs, early fire detection networks
- National Guard units - especially aviation units
- Faith-based and cultural groups
- Large Employers
- Health and Human Services
- Large Animal Rescue Teams
- National Weather Service
- Media

1. Do you have a good understanding of all the partners who need to be involved in your jurisdiction?  
Yes  No

## Communications

Communications between responding units and agencies is critical during the response to a wildfire and during evacuations.

1. Do the radio systems in your jurisdiction have adequate command and tactical frequencies that are agreed upon and all responders can access?  
Yes  No
2. Do all responders know how to operate their radios effectively? Including changing channels and tones to facilitate additional channels and flexibility when infrastructure is damaged, or volume/complexity exceeds plans?  
Yes  No
3. Do you have a regional communication plan with pre-programmed banks with area cooperators?  
Yes  No
4. How will you mobilize and communicate with non-traditional resources (i.e., public works, animal rescue, etc.) on your incident?  
Yes  No
5. What is your agency's communications interoperability plan?  
Yes  No
6. Do your responders have enhanced public safety cellular plans?  
Yes  No
7. Does your agency equip vehicles with cellular boosters?  
Yes  No
8. Can your organization stand up an incident management organization that can relieve dispatch of tracking and coordination of tactical resources?  
Yes  No
9. Can your organization provide on demand expanded dispatch capability to meet major incidents call taking capacity?  
Yes  No



Download as PDF



# Introduction

The International Association of Fire Chiefs (IAFC) and its Wildland Fire Policy Committee have created this Wildfire Evacuation Planning Toolkit, aiding local jurisdictions in evacuation planning. The Wildfire Evacuation Planning Toolkit contains three distinct pieces:

1. **The Capabilities Assessment** serves as a checklist for agencies to assess their current capability and readiness for conducting evacuations.
2. **The Post Assessment Action Plan** contains a collection of materials to aid in jurisdictional evacuation planning efforts.
3. **The Evacuation Zone Pre-Planner** is a map-based platform for agencies to draw pre-planned evacuation areas.

This application is intended to be easy to use without any previous experience with geospatial technologies or platforms.

- Users can explore their community within a map-based environment to make informed decisions on evacuation zone sizes and locations.
- Within the application, users can create, save, edit, and export evacuation zones.
- To support interoperability, users can download their evacuation zones in KML/KMZ or shapefiles for use in external evacuation systems.



**Capabilities Assessment**



**Post Assessment Action Plan**



**Evacuation Zone Pre-Planner**

\*If you do not have access to the Pre-Planner, you can request access by completing this short form: [IAFC Application Access](#).



This page contains a list of links to resources specifically designed to help an agency address gaps identified during the Wildfire Evacuation Capability Assessment. Use these resources to help your agency navigate the complicated wildfire evacuation pre-planning process. If you have any resources you think could be helpful, complete this short survey to add them to the collection: [Wildfire Evacuation Resource Submission](#)

To help fill gaps addressed in the Wildfire Evacuation Capability Assessment, relevant wildfire evacuation planning resources are provided.

## Risk Assessment



- Wildfire Risk to Communities Viewer (Webapp)
- Wildland-Urban Interface Chief's Guide 2nd Edition (Risk Assessment)
- Homeland Infrastructure Foundation-Level Data (HIFLD)

## Relationships



- Wildland-Urban Interface Chief's Guide 2nd Edition (Relationships)

## Jurisdictional Responsibility/Agreements





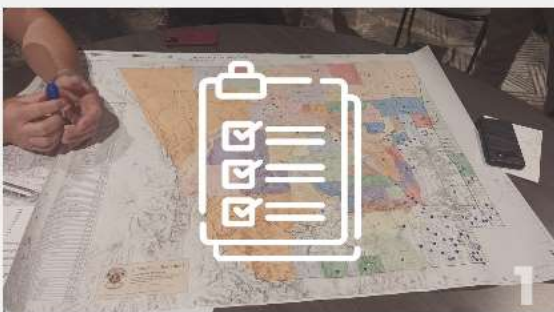
## Introduction

The International Association of Fire Chiefs (IAFC) and its Wildland Fire Policy Committee have created this Wildfire Evacuation Planning Toolkit, aiding local jurisdictions in evacuation planning. The Wildfire Evacuation Planning Toolkit contains three distinct pieces:

1. **The Capabilities Assessment** serves as a checklist for agencies to assess their current capability and readiness for conducting evacuations.
2. **The Post Assessment Action Plan** contains a collection of materials to aid in jurisdictional evacuation planning efforts.
3. **The Evacuation Zone Pre-Planner** is a map-based platform for agencies to draw pre-planned evacuation areas.

This application is intended to be easy to use without any previous experience with geospatial technologies or platforms.

- Users can explore their community within a map-based environment to make informed decisions on evacuation zone sizes and locations.
- Within the application, users can create, save, edit, and export evacuation zones.
- To support interoperability, users can download their evacuation zones in KML/KMZ or shapefiles for use in external evacuation systems.



### Capabilities Assessment



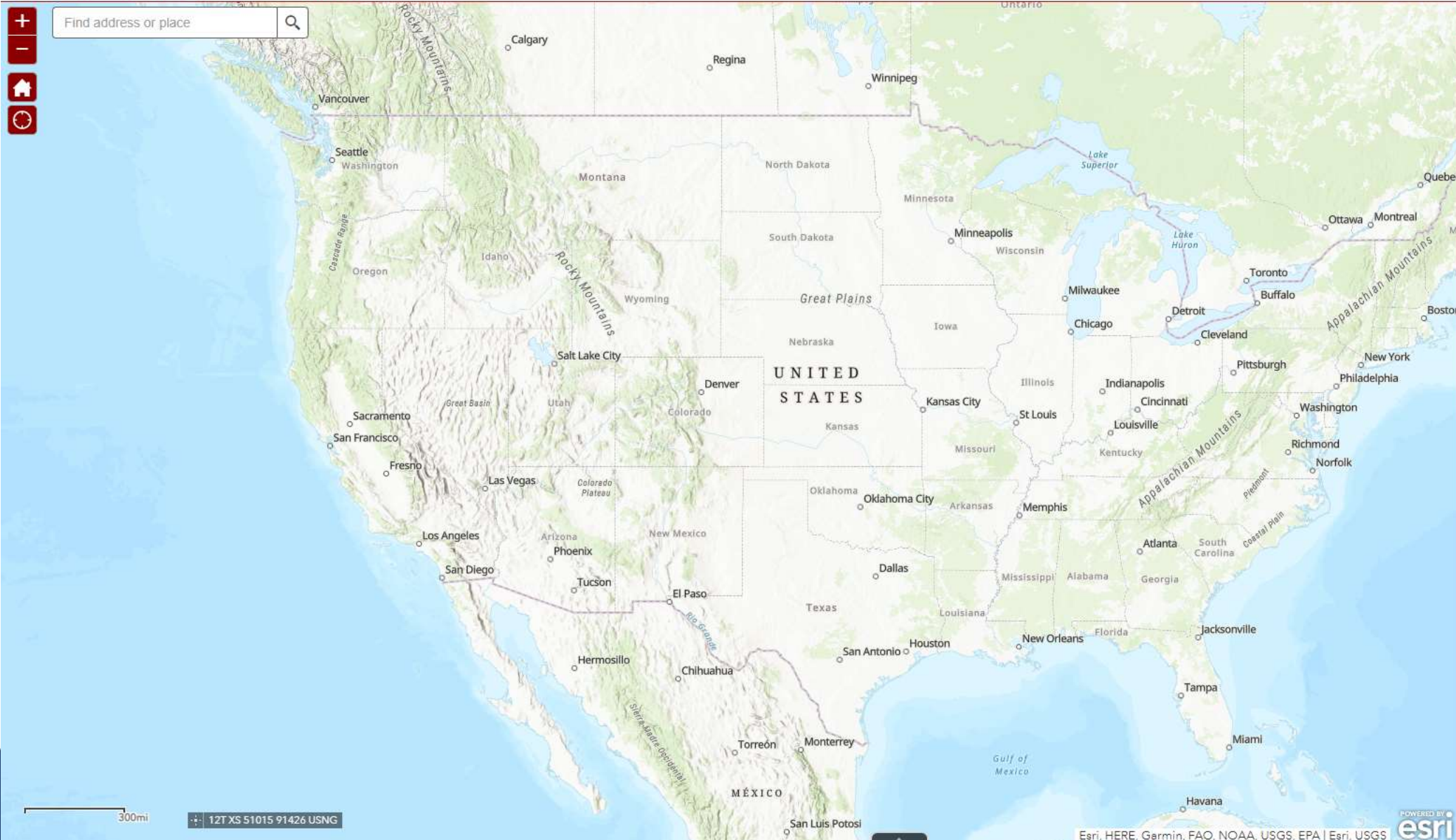
### Post Assessment Action Plan



### Evacuation Zone Pre-Planner

\*If you do not have access to the Pre-Planner, you can request access by completing this short form: [IAFC Application Access](#).





About

Instructions

This web mapping application features several "widgets" (tools) to help you create evacuation zones to aid the public in the event of an emergency.

Create Evacuation Zones Workflow

Creating custom evacuation zones for pre-planning purposes is straightforward:

1. Click the **Create Evac Zones and Add Points** widget.
2. Select the Evacuation Zones new feature in the bottom pane.
3. Click on the map to start drawing a polygon shape, each click is a corner of the shape. **Double click** on final corner to complete the polygon.
4. Add **applicable information** on the right side pane within the empty text boxes. Be descriptive but concise.
5. Click **Save** at the bottom.

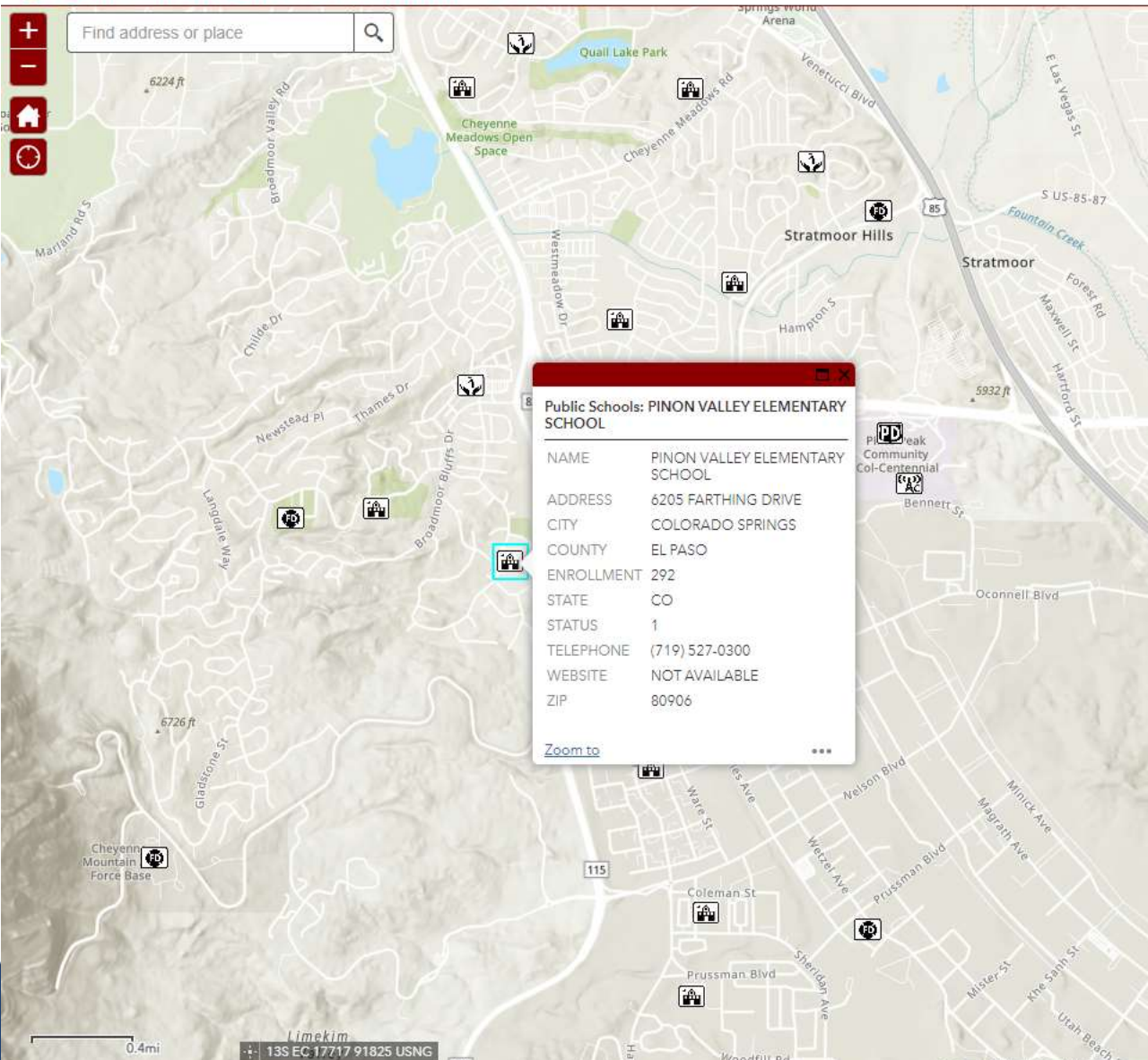
Follow the same steps above to place a **Point of Interest**, one click will place the point.

Export Data Workflow

The common operating workflow for creating exported **Shapefiles, KMLs, CSVs** and more within this webapp proceeds as follows:

1. Use the **Create Evac Zones and Add Points** widget to add points of interest and draw custom evacuation zones particular to your efforts. Fill in all applicable information on the side to annotate the features.
2. Use the **Filter** and **Select** widgets to pare down the evacuation zones to the ones you wish to export outside the





**Explore Your Community to make data-driven decisions about evacuation planning!**

- Population Centers
- Local EOCs
- Law Enforcement
- Fire Stations
- Cell Towers
- Schools
- Hospitals
- Nursing Homes
- Roads

Evacuation Zones and Operational Points of Interest

- Layers
- Evacuation Zones
  - Planning and Operations Points

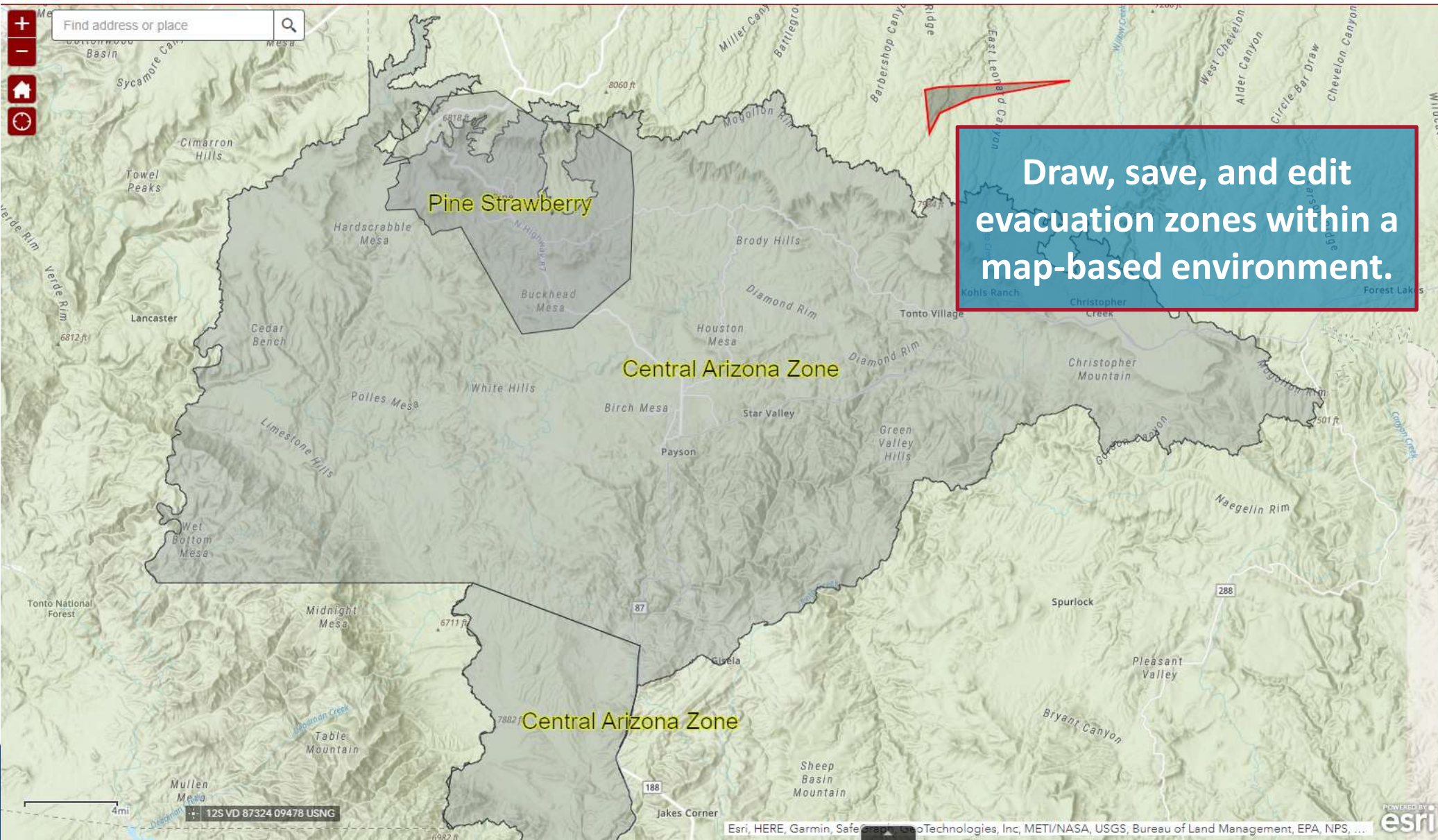
Base Data

- Nursing Homes
- Fire Stations
- USA Roads
- USA Counties
- USA Census Tracts
- U.S. Census Block Groups
- USA Census 2020 Redistricting Blocks

Wildfire-Specific Layers

- Layers
- Benefits of Improving Evacuation Routes
  - Wildfire Resiliency Census Tracts
  - Current Incidents
  - Current Perimeters
  - Wildfire Daily Fire Perimeter
  - Prescribed Fire





Create Evac Zones and Add Points

Select the Evacuation Zone template below to start drawing an evacuation zone. Use the Census Tracts or Blocks layers to aid in drawing boundaries around areas that contain a 2020 population estimate. Provide descriptive but succinct detail in the Description section to help inform local citizens and other operational personnel.

Add a Planning or Operational Point of Interest to the map from the template below. This may be a road closure, staging point, safe refuge area, or other. Provide descriptive but succinct detail in the Description section to help inform local citizens and other operational personnel.

Evacuation Zones

- New Feature

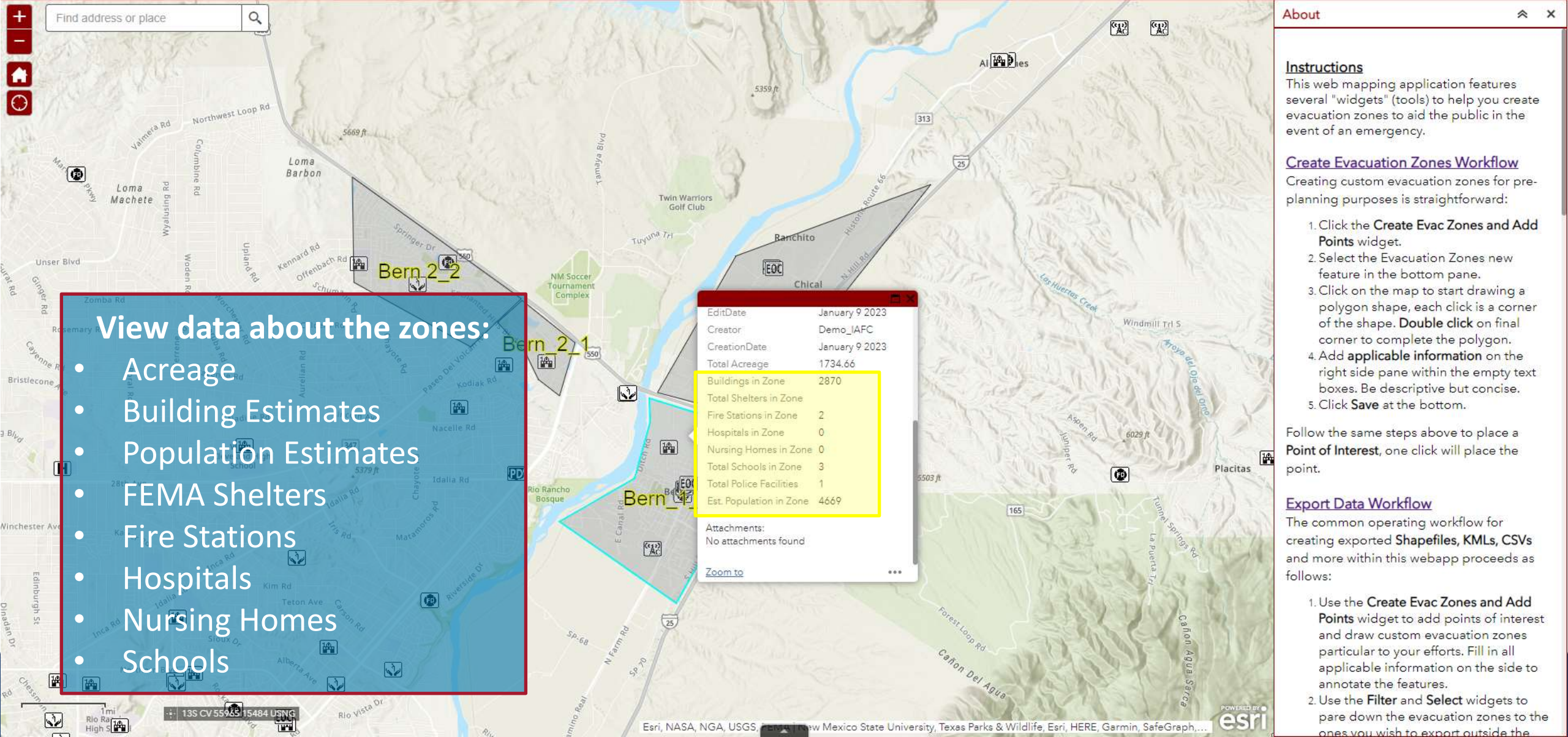
Planning and Operations Points

- Road Closure
- Choke Point
- Pinch Point
- Staging
- Temporary Evacuation Point...
- Temporary Refuge Area

Polygon



Find address or place



EditDate	January 9 2023
Creator	Demo_IAFC
CreationDate	January 9 2023
Total Acreage	1734.66
Buildings in Zone	2870
Total Shelters in Zone	
Fire Stations in Zone	2
Hospitals in Zone	0
Nursing Homes in Zone	0
Total Schools in Zone	3
Total Police Facilities	1
Est. Population in Zone	4669
Attachments:	No attachments found
Zoom to	...

- View data about the zones:**
- Acreage
  - Building Estimates
  - Population Estimates
  - FEMA Shelters
  - Fire Stations
  - Hospitals
  - Nursing Homes
  - Schools

About

Instructions
This web mapping application features several "widgets" (tools) to help you create evacuation zones to aid the public in the event of an emergency.

Create Evacuation Zones Workflow
Creating custom evacuation zones for pre-planning purposes is straightforward:

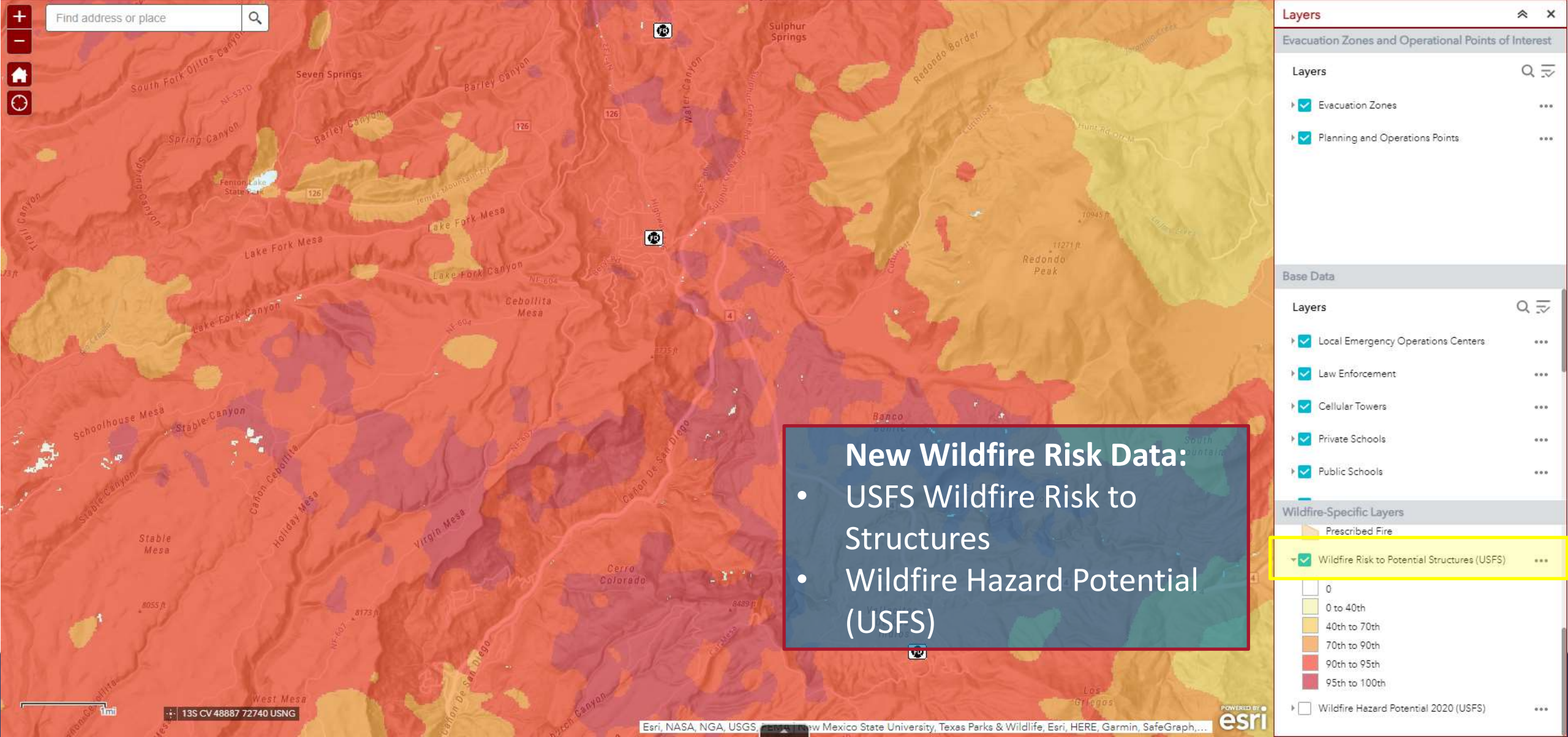
1. Click the Create Evac Zones and Add Points widget.
2. Select the Evacuation Zones new feature in the bottom pane.
3. Click on the map to start drawing a polygon shape, each click is a corner of the shape. Double click on final corner to complete the polygon.
4. Add applicable information on the right side pane within the empty text boxes. Be descriptive but concise.
5. Click Save at the bottom.

Follow the same steps above to place a Point of Interest, one click will place the point.

Export Data Workflow
The common operating workflow for creating exported Shapefiles, KMLs, CSVs and more within this webapp proceeds as follows:

1. Use the Create Evac Zones and Add Points widget to add points of interest and draw custom evacuation zones particular to your efforts. Fill in all applicable information on the side to annotate the features.
2. Use the Filter and Select widgets to pare down the evacuation zones to the ones you wish to export outside the





**New Wildfire Risk Data:**

- USFS Wildfire Risk to Structures
- Wildfire Hazard Potential (USFS)

**Layers**

Evacuation Zones and Operational Points of Interest

Layers

- Evacuation Zones
- Planning and Operations Points

Base Data

Layers

- Local Emergency Operations Centers
- Law Enforcement
- Cellular Towers
- Private Schools
- Public Schools

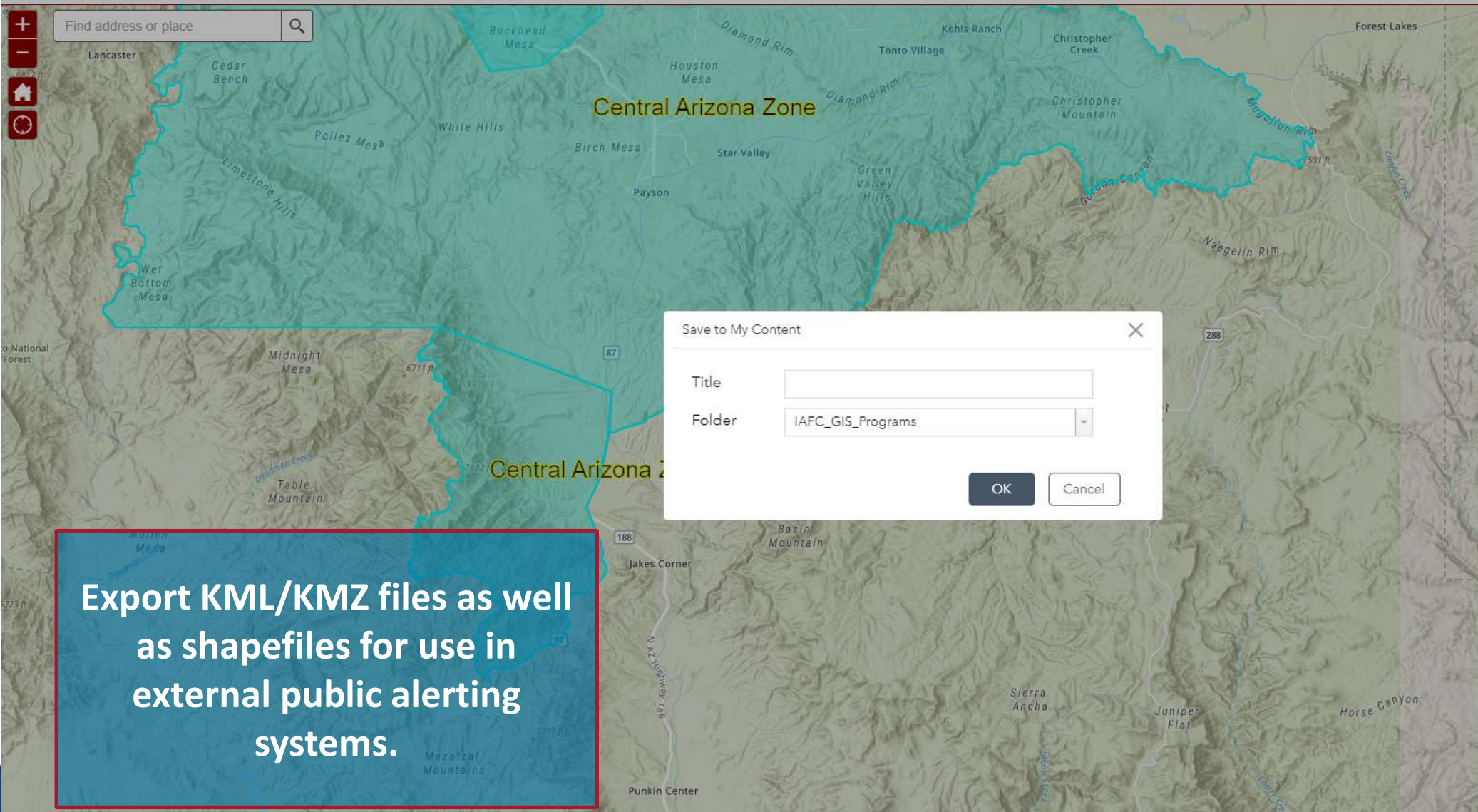
Wildfire-Specific Layers

- Prescribed Fire
- Wildfire Risk to Potential Structures (USFS)
- Wildfire Hazard Potential 2020 (USFS)

Legend for Wildfire Risk to Potential Structures (USFS):

- 0
- 0 to 40th
- 40th to 70th
- 70th to 90th
- 90th to 95th
- 95th to 100th





Select

Select Clear

Layer

- Evacuation Zones 28
- Planning and Operations Points 0
- Local Emergency Operations Centers 0
- Law Enforcement 0
- Cellular Towers 0
- Private Schools 0
- Public Schools 0
- Hospitals 0
- Nursing Homes 0
- Fire Stations 0
- USA Roads 0
- Benefits of Improving Evacuation Routes 0
- Wildfire Resiliency Census Tracts 0
- Current Incidents 0
- U.S. Census Block Groups 0
- USA Census 2020 Redistricting Blocks 0
- Current Perimeters 0
- SVI2020\_US\_county 0
- SVI2020\_US\_tract 0
- SVI2020\_US\_county - Theme 1 0
- SVI2020\_US\_tract - Theme 1 0

Save to My Content

Title

Folder

OK Cancel

Export KML/KMZ files as well as shapefiles for use in external public alerting systems.

## Evacuation Zone Pre-Planner Tutorials DRAW AN EVACUATION ZONE



1. Zoom in until the scale bar says 1 mile or less.
2. Click on the widget: **Create Evac Zones and Add Points**
3. Click **New Feature** under Evacuation Zones
4. Click on the map where you want to start an evacuation zone. If you have the Roads layer turned on, you can hold Control on your keyboard to snap the lines of the evacuation zone to the roads.
5. Continue drawing the evacuation zone by clicking at each desired point of the evacuation zone. When finished, double click to complete the drawing.
6. After saving the evacuation zone, close out of the widget and click on the evacuation zone to open the pop-up. Scroll down and review the pop-up to see information like estimated population within the evacuation zone or number of schools.

## Evacuation Zone Pre-Planner Tutorials EXPORT EVACUATION ZONE



1. From the widget ribbon, click **More**. Then click **Select**.
2. On the **Select** widget, uncheck every layer except for **Evacuation Zones**. Click and drag a box inside the evacuation zone that you want to export.
3. On the **Select** widget, click the three dots next to Evacuation Zones.
4. Click **Save to My Content**. Then, log into your ArcGIS Online account. Click **Content**. Click on the name of your saved evacuation zone. On the right side of the screen, click **Publish**. Then click **Export Data** and choose which file type to export as.

- ✓ Draw an Evacuation Zone Guide
- ✓ View Information (Data) Guide
- ✓ Add Information (Data) Guide
- ✓ Copy Features Guide
- ✓ Edit Evacuation Zone Guide
- ✓ Export Evacuation Zone Guide
- ✓ Cut One Evacuation Zone into Two Guide
- ✓ Combine Two Evacuation Zones into One Guide
- ✓ Reshape Evacuation Guide



## One-Pager Help Guides



# Volunteer Firefighter Recruitment & Retention

- More and more CFDs are losing firefighters and they are not being replaced.
- The pool for candidates is changing.
- We have not provided tools to identify those changes and how to find the new candidates.



# North Carolina Volunteer Firefighter Recruitment & Retention

2023 SAFER Grant Survey Results

Select a Region  
All Regions

Select a County  
All Counties

Select a Department  
All Departments

Select a Date  
No date selected

Total Survey Submissions

# 516

Number of Departments with Survey Submissions

# 99

Select a Region to see number of submissions

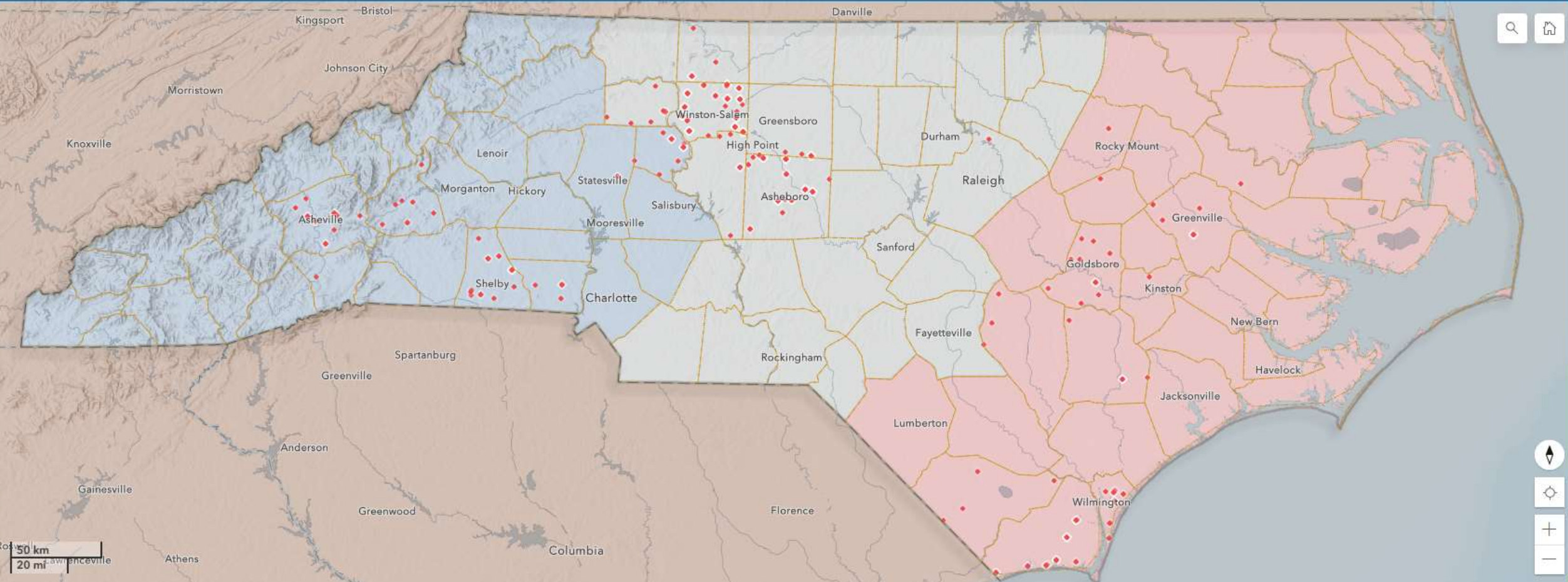
Selection required on one or more elements

Select a County to see number of submissions

Selection required on one or more elements

Select a Department to see number of submissions

Selection required on one or more elements



Esri, HERE, Garmin, FAO, NOAA, USGS, EPA, NPS | Esri, USGS | Esri, US Census Bureau | North Carolina Geodetic Survey (NCGS) | Esri; U.S. Department of Commerce, Census Bureau; U.S. Department of Commerce (DOC), National Oceanic and Atmospheric Administration (NOAA), National O... Powered by Esri



# North Carolina Volunteer Firefighter Recruitment & Retention

2023 SAFER Grant Survey Results

Select a Region

Piedmont

Select a County

FORSYTH

Select a Department

All Departments

Select a Date

No date selected

Total Survey Submissions

516

Number of Departments with Survey Submissions

99

Select a Region to see number of submissions

292

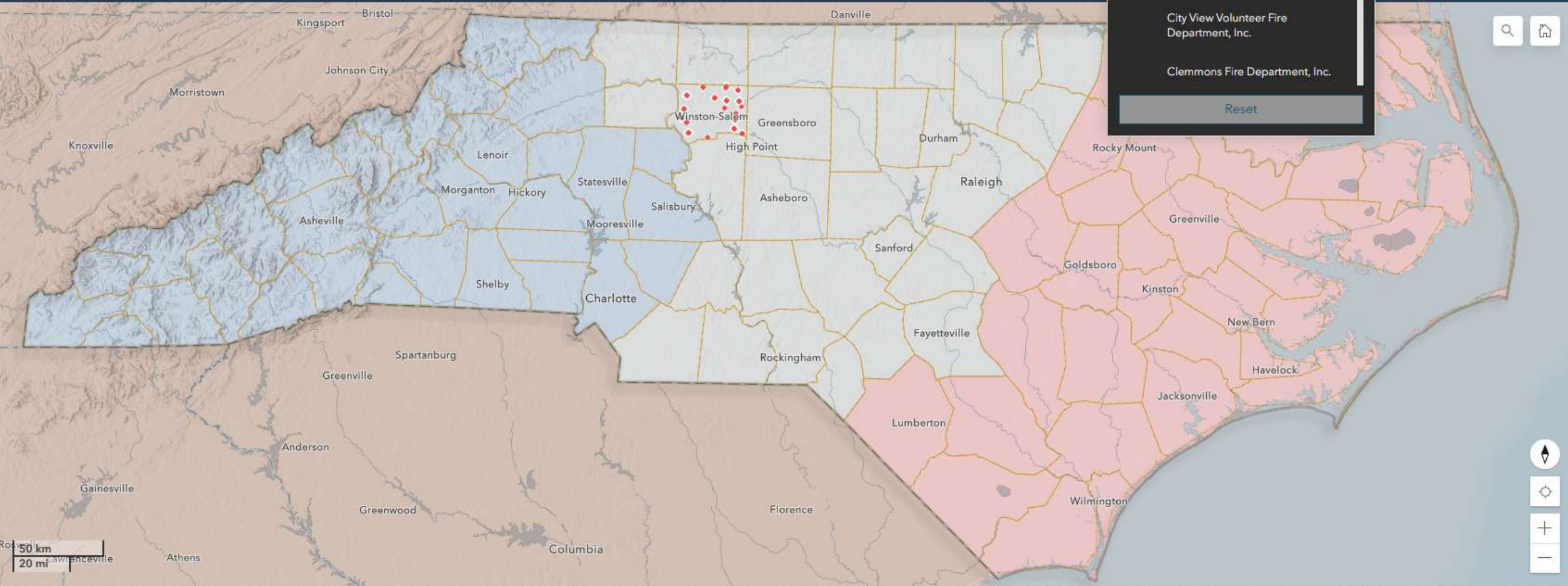
Select a County to see number of submissions

14

Select a Department to see number of submissions

Filtered on one or more elements

- All Departments
  - Beeson Crossroads Volunteer Fire & Rescue, Inc.
  - Belews Creek Volunteer Fire & Rescue Department, Inc.
  - City View Volunteer Fire Department, Inc.
  - Clemmons Fire Department, Inc.
- [Reset](#)



Esri, HERE, Garmin, FAO, NOAA, USGS, EPA, NPS | Esri, USGS | Esri, US Census Bureau | North Carolina Geodetic Survey (NCGS) | Esri; U.S. Department of Commerce, Census Bureau; U.S. Department of Commerce (DOC), National Oceanic and Atmospheric Administration (NOAA), National O... Powered by Esri



# Life Stage

2023 SAFER Grant Survey Results

Select a Region

All Regions

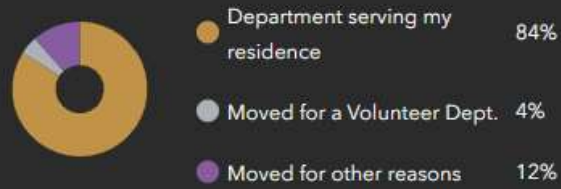
Select a County

All Counties

Select a Department

All Departments

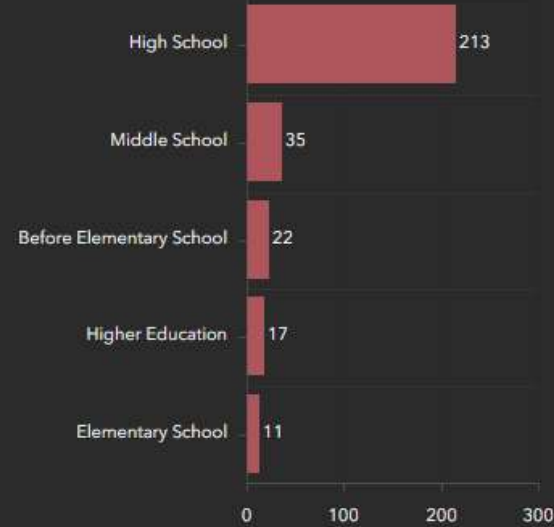
When you initially joined the fire service, did you join a department serving your residence or a department serving another districts?



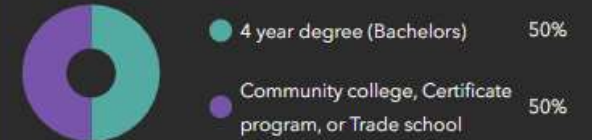
At which life stage did you initially become involved in the fire service?



Which stage of school best describes when you initially became involved in the fire service?



Which form of higher education best describes the type of degree you were pursuing when you joined the Fire Service?



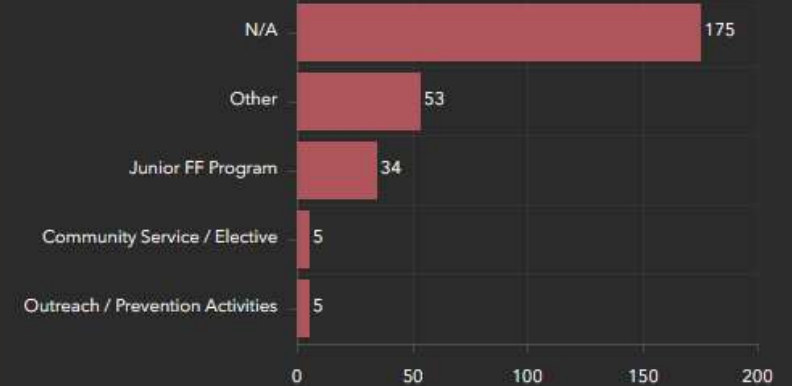
Were you encouraged to join the fire service by a school counselor?



Did you become involved with the fire service because you were required to fulfill community service hours?



What did your school offer that encouraged you to join the fire service?



Map

Life Stage

Characteristics, Hobbies, & Entertainment

Initial Motivations

Current Motivations

Who's Missing?

# Initial Motivations for Volunteer Firefighting

2023 SAFER Grant Survey Results

Select a Region

All Regions

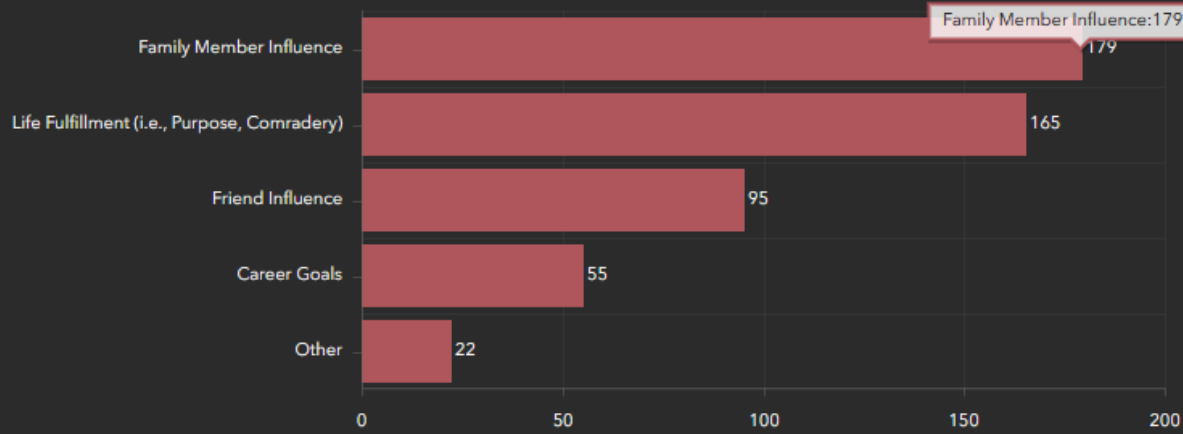
Select a County

All Counties

Select a Department

All Departments

## What was your initial motivation for joining the Fire Service?

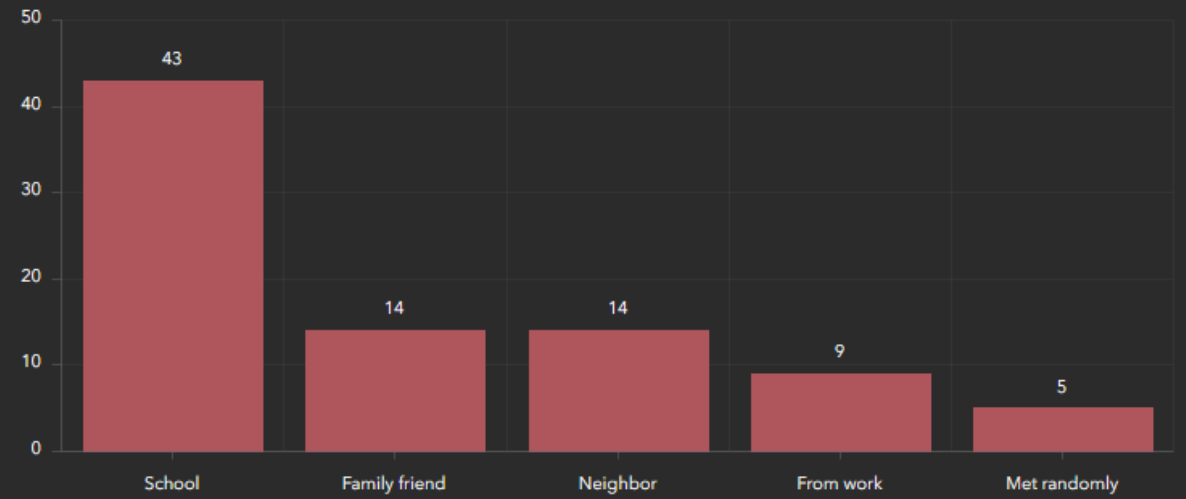


Primary Motivation

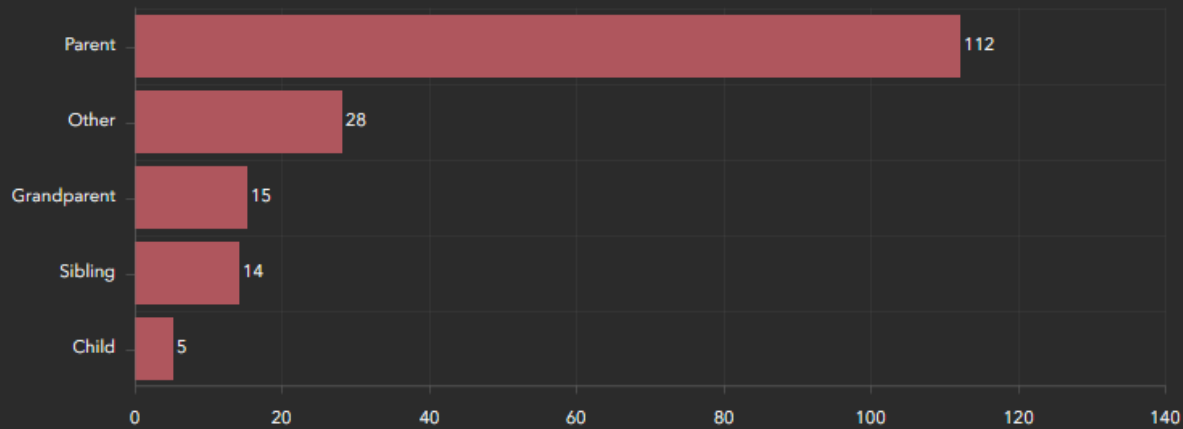
Second Motivation

Third Motivation

## How did you meet the friend that motivated you to join the Fire Service?



## Who was the family member that motivated you to join the Fire Service?



Family Member Influence

Family Member - Other Responses

## Which career path was your primary motivation for joining the Fire Service?



Career Path Motivation

Initial Residence

Map

Life Stage

Characteristics, Hobbies, & Entertainment

Initial Motivations

Current Motivations

Who's Missing?



# Current Motivations for Volunteer Firefighting

2023 SAFER Grant Survey Results

Select a Region

All Regions

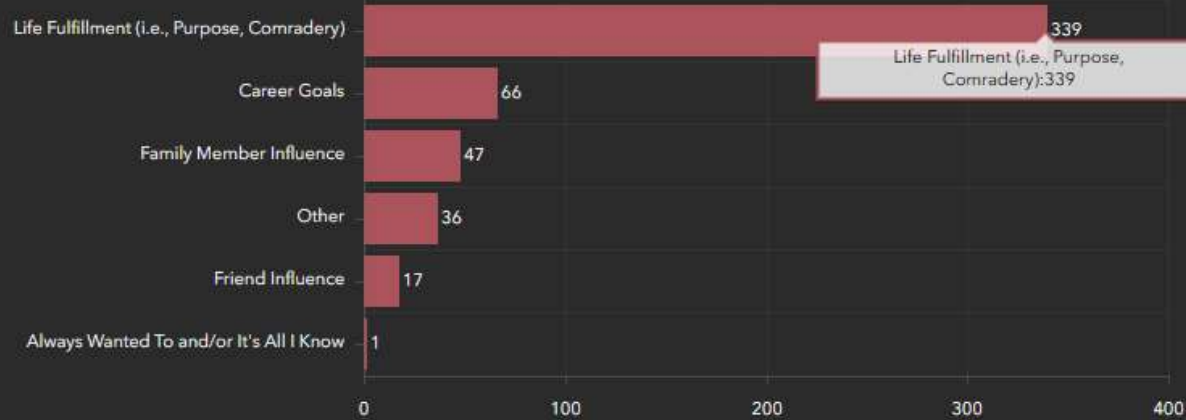
Select a County

All Counties

Select a Department

All Departments

## What is your primary motivation for continuing to be a Volunteer Firefighter?



Primary Motivation

Second Motivation

Third Motivation

## How did you meet the friend that is your primary motivation for continuing to be a Volunteer Firefighter?



## Who is the family member that is your primary motivation for continuing to be a Volunteer Firefighter?



Family Member Influence

Family Member - Other Responses

## Which career path was your primary motivation for continuing to be a Volunteer Firefighter?



Map

Life Stage

Characteristics, Hobbies, & Entertainment

Initial Motivations

Current Motivations

Who's Missing?

# Who's Missing From Your Department?

2023 SAFER Grant Survey Results

Select a Region

All Regions

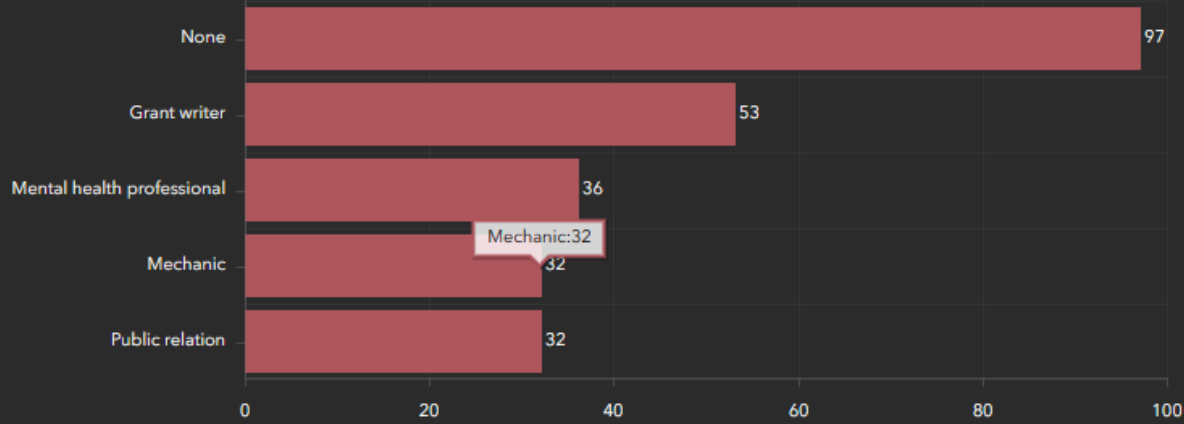
Select a County

All Counties

Select a Department

All Departments

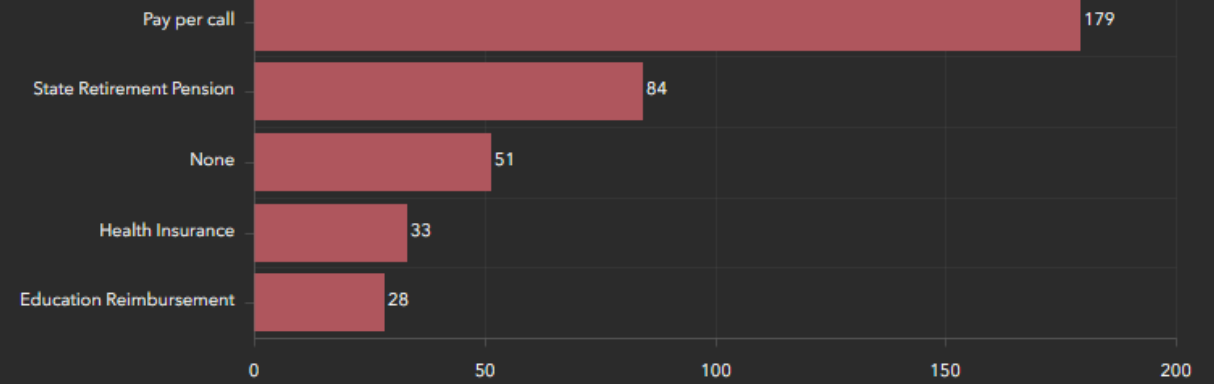
## Which role do you see missing from your department and you think is the most important to add to your department?



Missing Roles

Other Responses

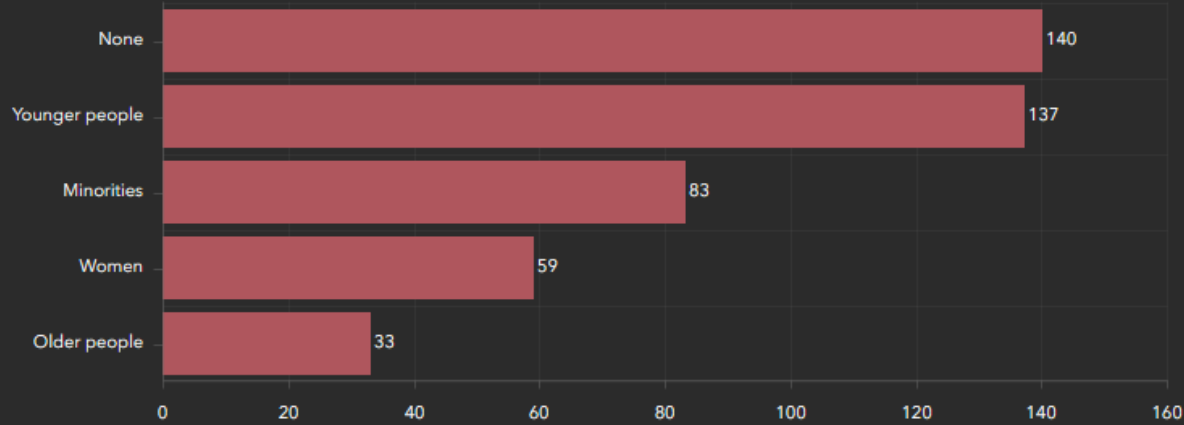
## Which benefit do you think would be the most effective incentive to improve recruitment and retention at your department?



Most Effective Incentives

Other Responses

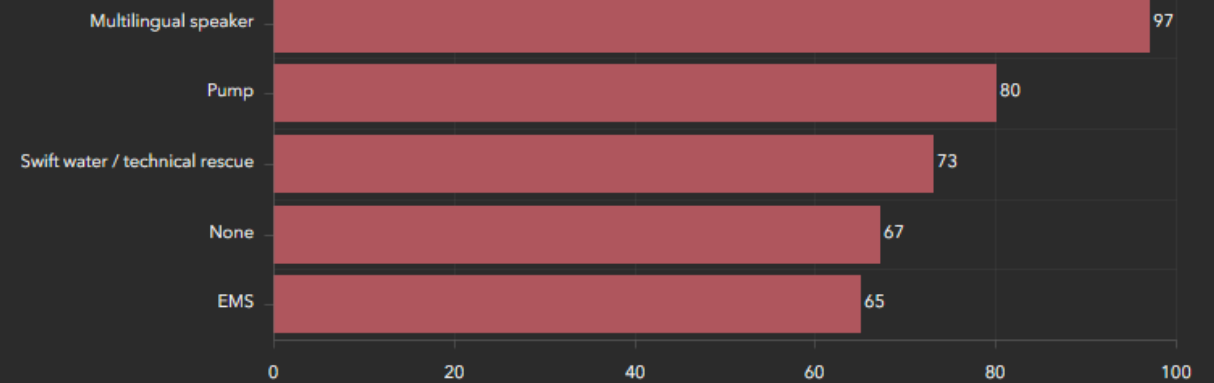
## Who is the most underrepresented at your department but is present within your community?



Underrepresented People

Other Responses

## Which specific training do you think your department needs to recruit more people with expertise or train on the most?



Missing Training

Other Responses

Map

Life Stage

Characteristics, Hobbies, & Entertainment

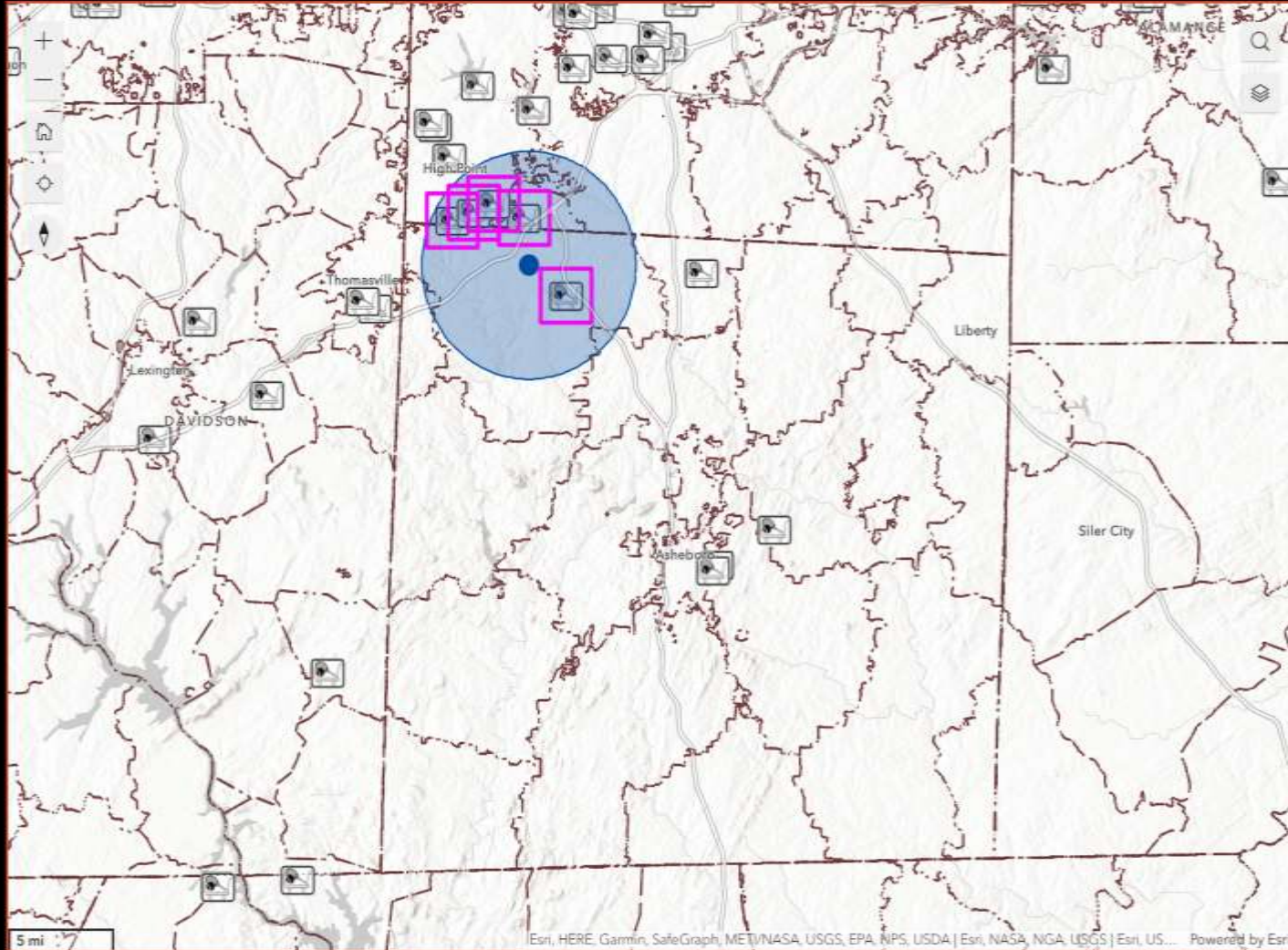
Initial Motivations

Current Motivations

Who's Missing?



# View 3: Recruitment Locations



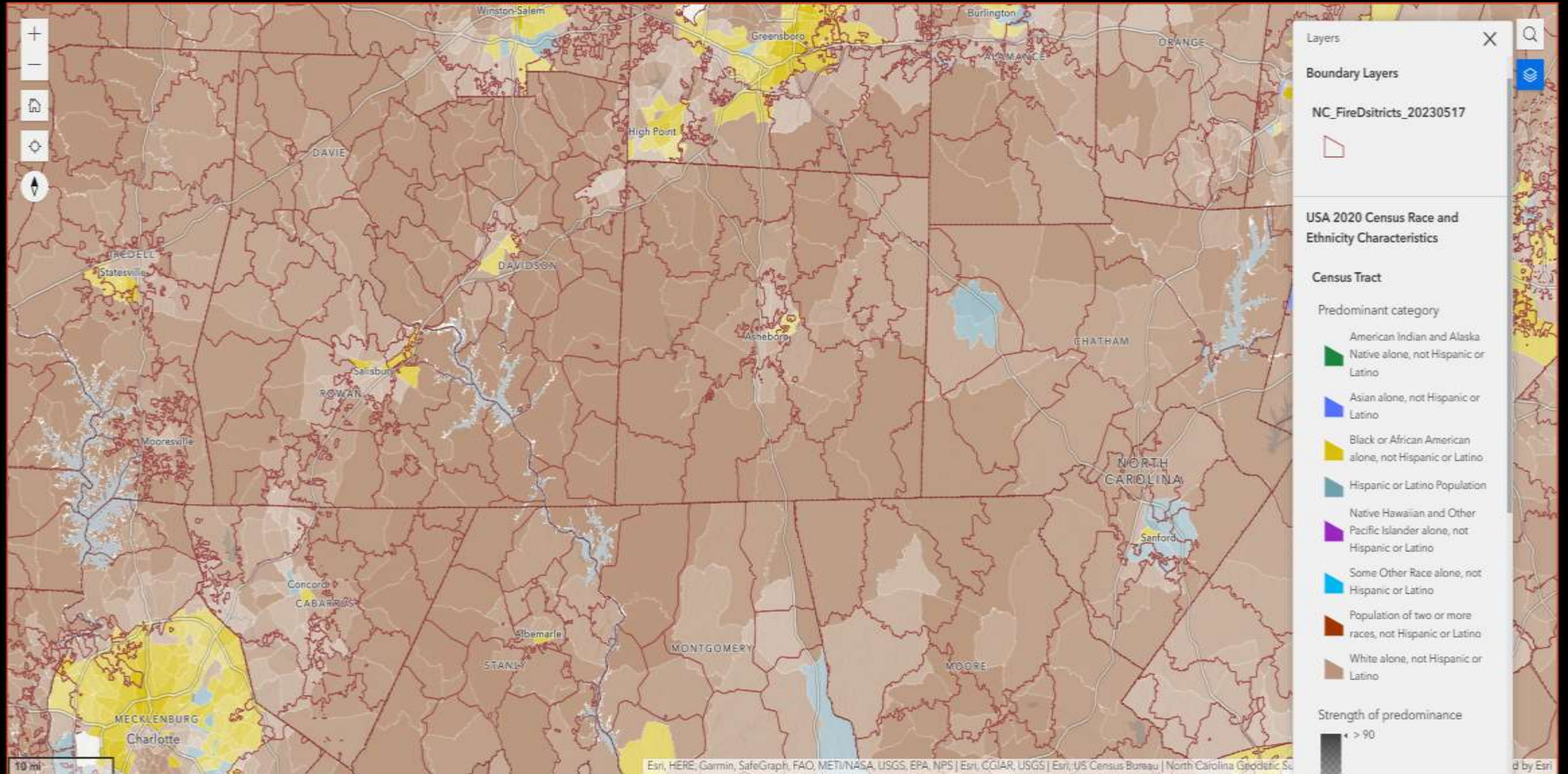
Location: 5 Miles

Closest Address: 114-198 Lockhart St, High Point, North Carolina, 27263

Veteran and Military Organizations	1	>
Clubs	4	>
Public Schools	13	>
Trade and Vocational Schools	1	>
Sporting Goods Stores	5	▼
Highland Golf of Archdale	2.09 mi	>
Race Daze Racing Apparel	2.2 mi	>
Team Connections Inc	3.16 mi	>
Hibbett Sports	3.45 mi	>
Fishing Fever Tackle	4.07 mi	>



# View 4: Community Demographics & Recruitment





- Gyms**  
Day Time, Week Day  
Success: I showed up
- Hunting Stores**  
Night Time, Weekend  
Success: It was great
- Camp Grounds**  
Day Time, Holiday  
Success: Used Smokey the bear
- Schools**  
Day Time, Week Day  
Success: Had hot dogs
- Camp Grounds**

## What Would You Do Different Next Time?

- Gyms**  
Advice to improve next time: Work out with the guys
- Hunting Stores**  
Advice to improve next time: Give away Hunting lisences
- Camp Grounds**  
Advice to improve next time: Get a cooling vest
- Schools**  
Advice to improve next time: Make homemade Chilli
- Camp Grounds**  
Advice to improve next time: Go with bear spray
- Schools**  
Advice to improve next time: Take Candy for the kids
- Gyms**

# Questions?



Jeff Dulin Strategic Advisor IAFC  
jdulin@iafc.org





# THANKS!

---

[napsfoundation.org](http://napsfoundation.org)

[@napsfoundation](https://www.instagram.com/napsfoundation)

