

Keynote

Chad Beam
Section Chief, South Carolina
Emergency Response



Geo-enabling the Search and Rescue Community



Chad Beam, Section Chief
South Carolina Emergency Response
November 15th, 2023

South Carolina State Fire



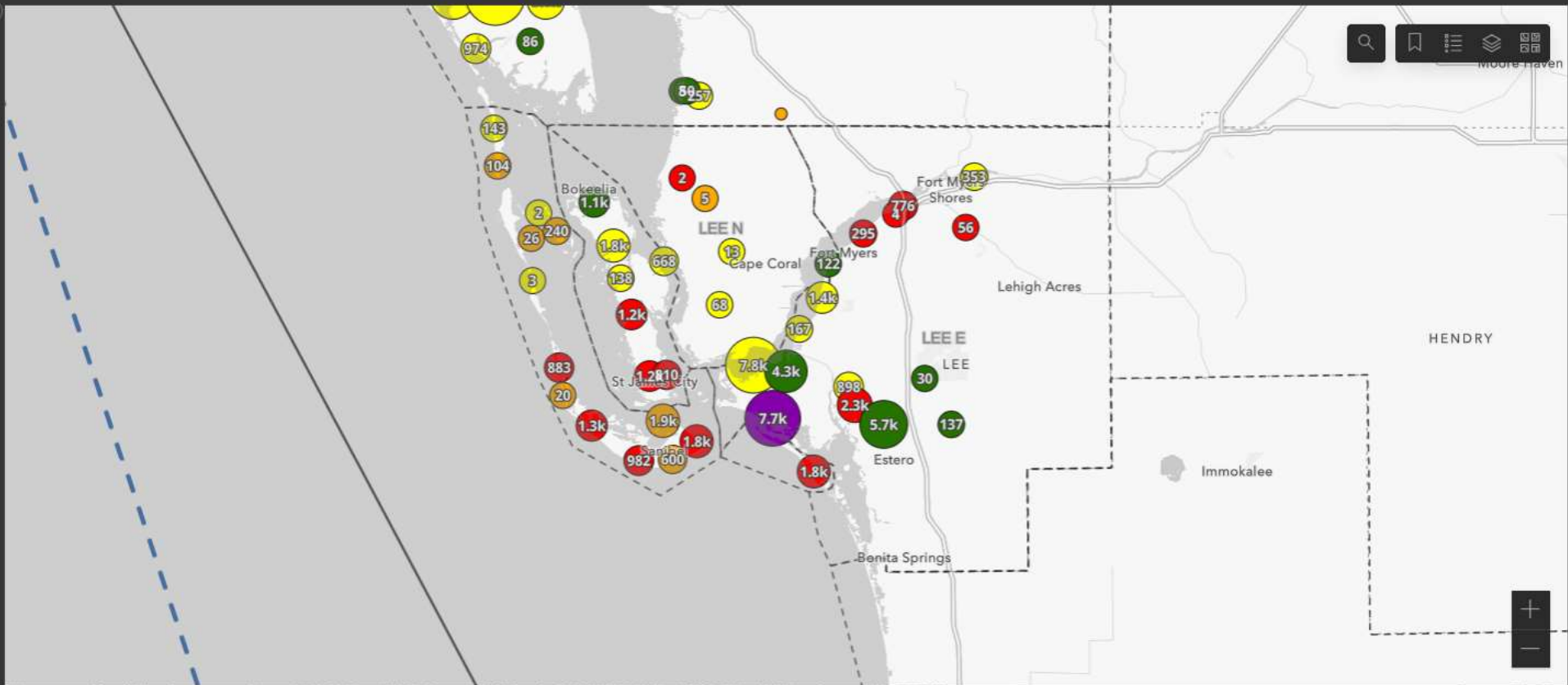


This is US&R

Division List

Clicking on a division below will filter the map and other elements of information.

- CHARLOTTE
- COLLIER
- FT MYERS BEACH
- HARDEE
- HILLSBOROUGH
- LEE E
- LEE N
- MANATEE
- MONROE
- OSCEOLA
- PINE ISLAND
- PINELLAS
- SANIBEL
- SARASOTA



University of South Florida, County of Lee, FL, FDEP, Esri, HERE, Garmin, SafeGraph, FAO, METI/NASA, USGS, EPA, NPS | Inti Bogari, FEMA US&R, Powered by Esri

- Map
- Waypoint Tally
- Damage
- People
- Waypoints Per Day
- Waypoints Per Team

<h3>Waypoints</h3> <p> 108,922</p>	<h3>Human Interactions</h3> <p> 2,422</p>	<h3>Damage Observations</h3> <p> 86,707</p>	<h3>Miles of Tracklogs</h3> <p> 22.6k</p>
------------------------------------	---	---	---

Total waypoints based on selection. Assists, Rescues, Evacuations, and Shelter-in-Place. Total damage observations based on selection. Total tracklog miles based on selection.

Now so is this...

Inspections/Assessments after a Disaster

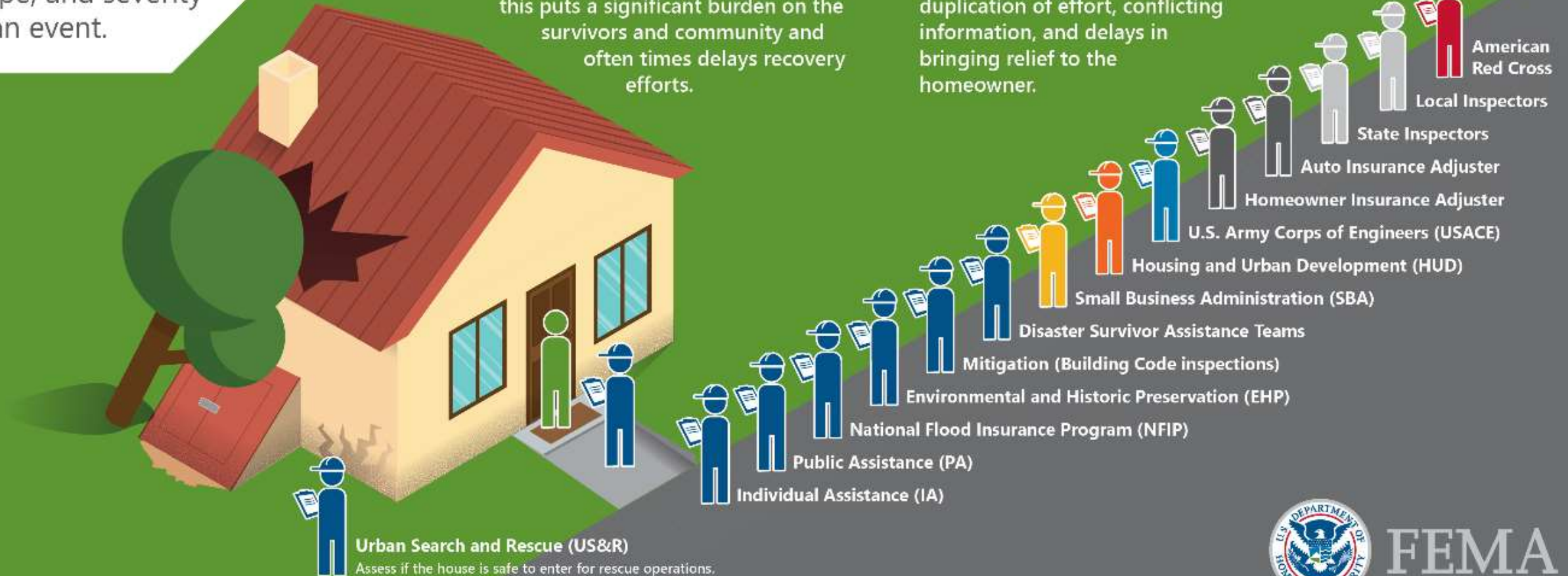
Assessments are an essential part of the response and recovery process and are critical for assessing the size, scope, and severity of an event.

THE CHALLENGE

When a home is damaged as a result of a natural or man-made disaster, numerous damage assessments are performed to assess the safety of the structure, quantify the damage, and determine financial aid from the government and/or insurance company. While each assessment is conducted for a specific purpose, this puts a significant burden on the survivors and community and often times delays recovery efforts.

THE SOLUTION

Consistent standards and data sharing mechanisms are needed so various programs and agencies (e.g., state and local authorities, federal agencies, statutory authorities, non-profit organizations) can leverage the same data collected during the preliminary damage assessment. This will help avoid duplication of effort, conflicting information, and delays in bringing relief to the homeowner.



FEMA

abc NEWS

HURRICANE FLORENCE

SATELLITE AND PATH

Mon 8:00AM
30 mph



Atlanta

Macon

Asheville

Charlotte

Columbia

Sun 8:00AM
50 mph

Charleston

Savannah

Sat 8:00AM
100 mph

2

Wilmington

3

Fri 8:00AM
120 mph

Thu 8:00PM
140 mph

4

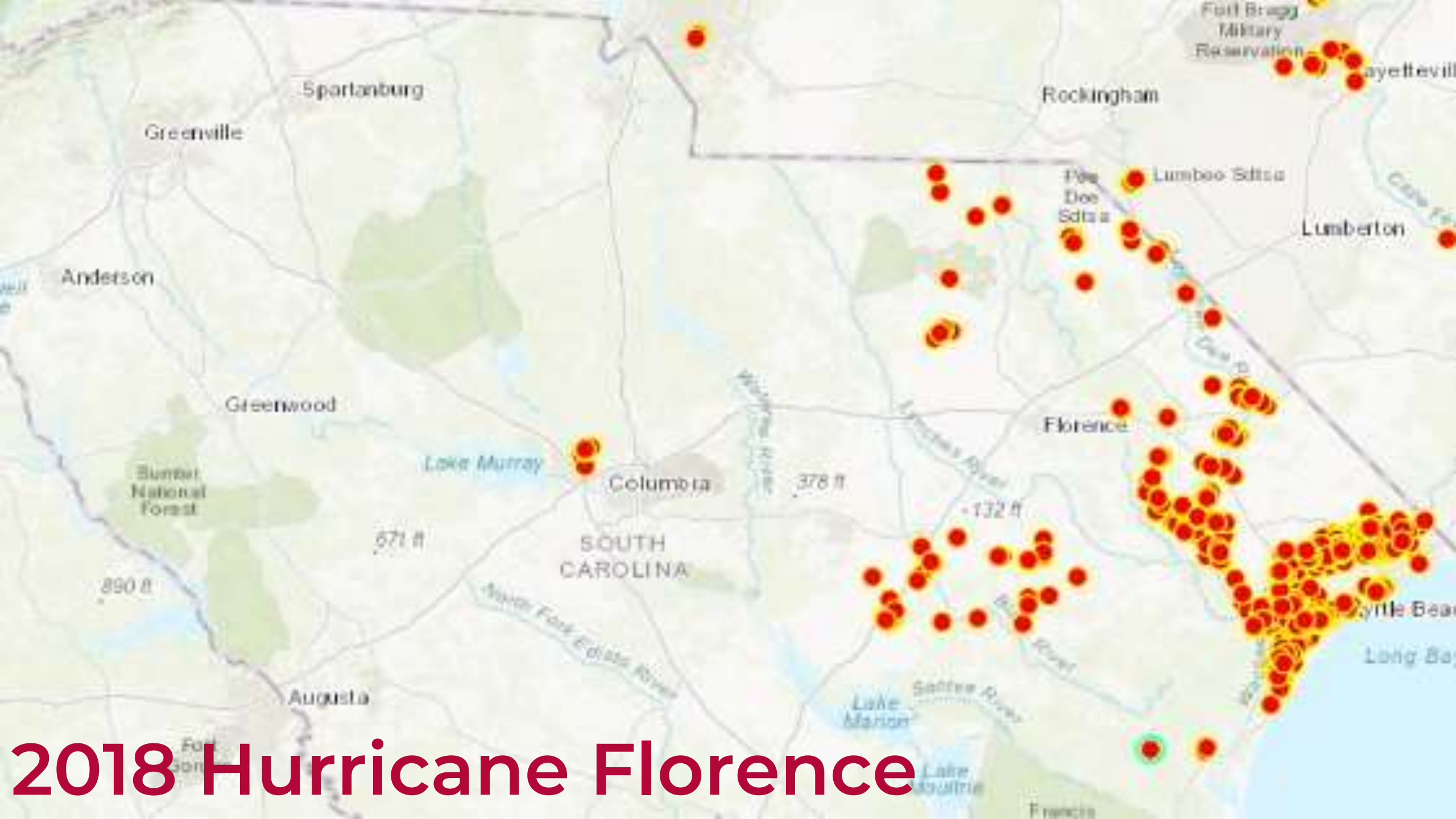
Thu 8:00AM
145 mph

4

Cape Hatteras

W
Gu





2018 Hurricane Florence



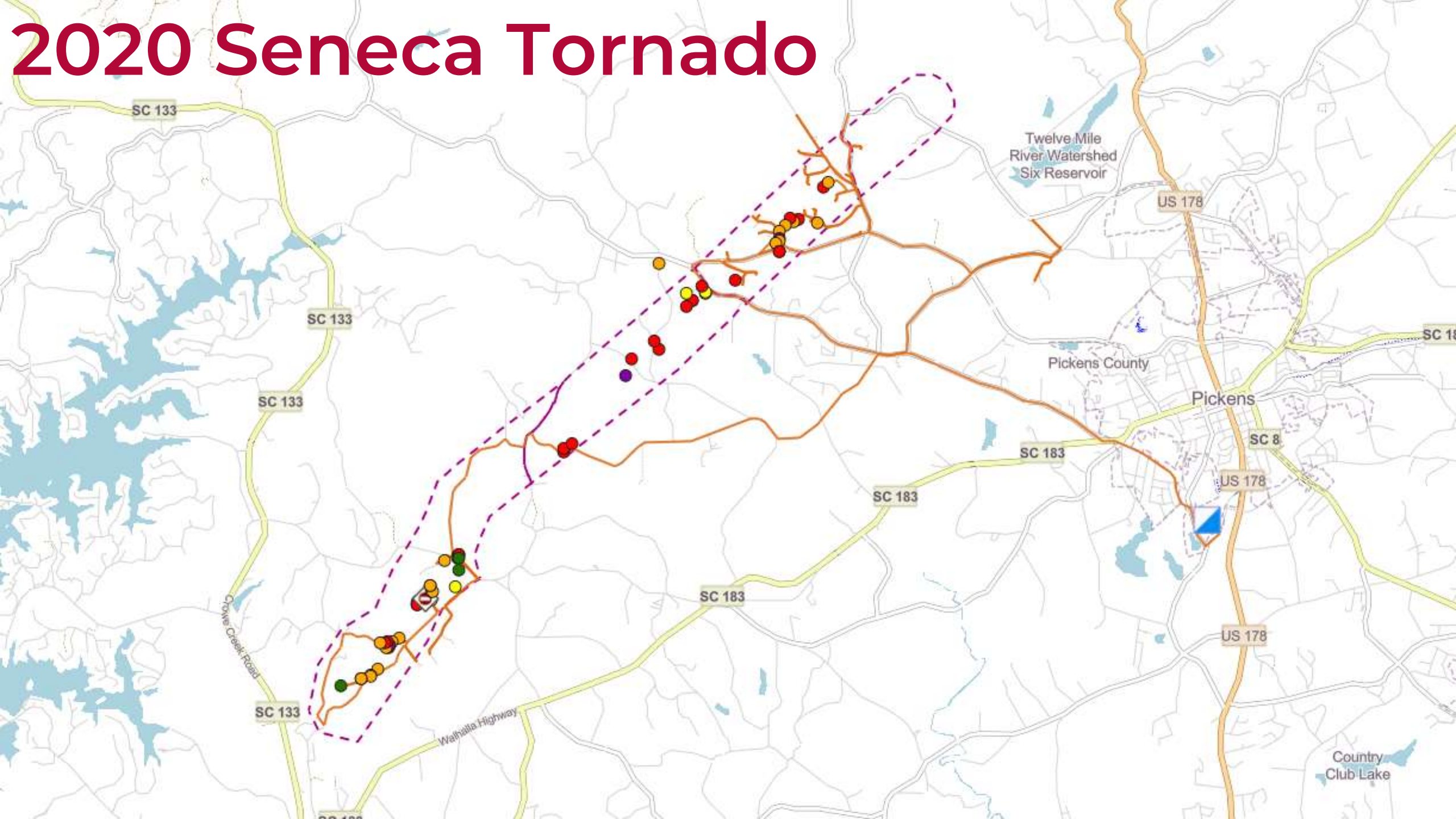
S&T

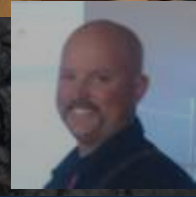
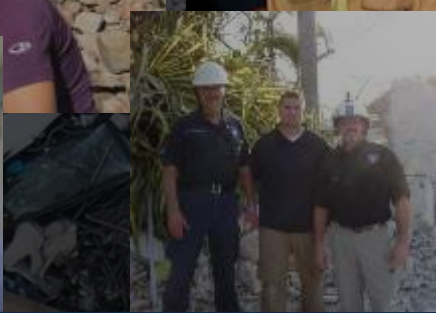
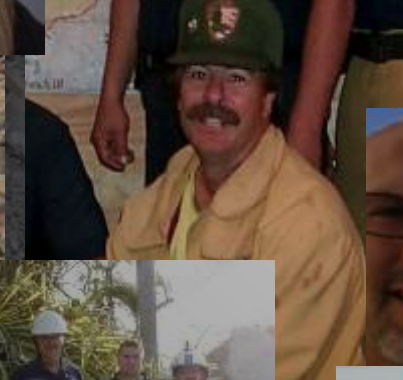
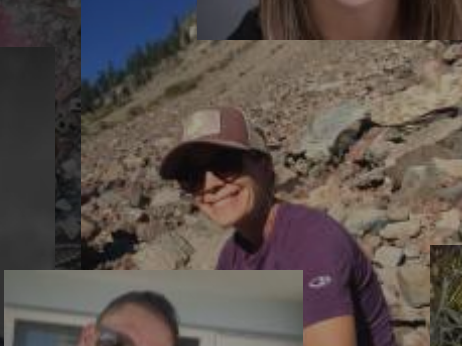
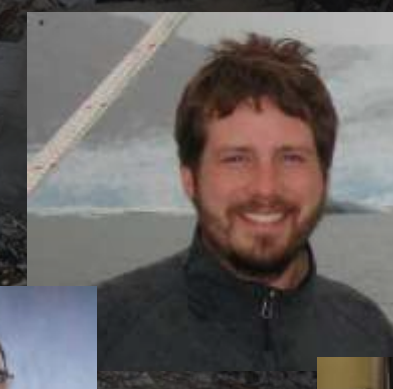


NAPSG Foundation



2020 Seneca Tornado





National Search and Rescue Geospatial Coordination Group





Thank you

Chad Beam

803-528-0291

Chad.beam@lir.sc.gov



NSARGC