



InSPIRE

Innovation Summit for Preparedness & Resilience

Uniting the Community: A Look into South
Carolina's Emergency Joint Response

Meet the presenters



Chad Beam, MPA, NRP
Section Chief, SC State
Fire



Emily Razzano,
GIS Manager,
SC Emergency
Management Division

Objective

South Carolina agencies face a diverse geographic and hazard environment, from flooding in Charleston to complex search and rescue operations in the upstate region. See how SC-TF1 utilizes GIS for operations, and how SCEMD uses GIS for preparedness activities and outreach.

SCEMD Hubsite

<https://gis-scemd.hub.arcgis.com/>

The screenshot shows the SCEMD GIS Hub website. At the top, there is a navigation bar with the SCEMD logo, links for 'GIS Hub Home', 'SERT and County Partners', and 'Palmetto EOC', and social media icons for Instagram, Twitter, and Facebook. The main header features a background image of a building with a South Carolina flag and the text 'SCEMD GIS Hub' and 'Map. Experience. Stay Connected.'. Below this is a login notice: 'SCEMD Personnel, SERT, and County Partners: Please use the Sign In link to log in with your ArcDline credentials to view all content.'. The main content area is titled 'SCEMD Dashboards and Web Applications' and contains four tiles: 'KNOW YOUR ZONE HURRICANE' (Know Your Zone Hurricane), 'BUSINESS OPERATIONS' (Business Emergency Operations Dashboard), 'KNOW YOUR ZONE NUCLEAR' (Know Your Zone Nuclear), and 'SOUTH CAROLINA EARTHQUAKES' (USGS SC Earthquakes).

Palmetto EOC

<https://portal.palmettoeoc.com>

The screenshot displays the Palmetto EOC portal interface. The top navigation bar is blue and contains the text "Palmetto" and a search icon. Below the navigation bar is a search bar labeled "ArcGIS World Geocoding Service". The main area is a map of South Carolina, showing major cities like Atlanta, Columbia, Charleston, and Fayetteville, along with interstate highways and national forests. On the left side, there is a vertical menu with various options: "AAR Input", "Bookmarks", "Call Centers", "Chat", "Communication Checks" (with a toggle switch), "County Closures" (with a toggle switch), "County Resource Lists", "Dashboard", "Disaster Recovery Centers" (with a toggle switch), "Distribution Lists", "DOT Video Wall", and "Executive Summaries" (with a toggle switch). The bottom right corner of the map area features the text "POWERED BY esri" and "Esri, HERE, Garmin, FAO, NOAA, USGS, EPA, NPS".

Data & US&R

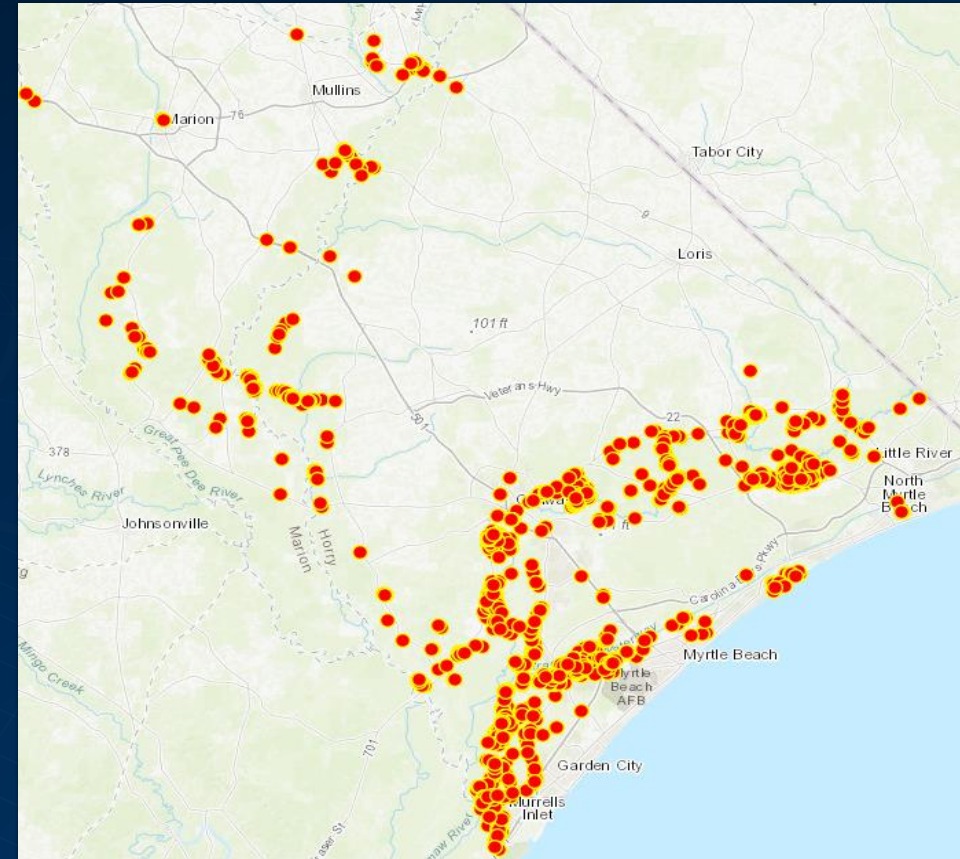
- US&R historically operated in archaic times when it came to mapping and technology.
- This didn't allow for current information to flow which slowed operations.
- Then came...GIS...for US&R!



Data!

Goal: Effect the most rescues
& to save the most lives, with
the most current information.
This requires some level of
technology!

What we had been missing!



How do we use data?

- Once a US&R team arrives, the first questions are asked.
- Who needs to go?
- What are we doing?
- When do we need to have it done?
- Where are we going?
- Why are we going?



Data!

- All of those questions involve data.
- US&R teams have produced data for years...we just never used it.
- Data: factual information (such as measurements or statistics) used as a basis for reasoning, discussion, or calculation



Who?

- Who needs to go is based off of what the need is, this can be solved by data...GIS data



What?

- What are we doing is answered with data. This is fed back to the command post for the Incident Support Team to digest and make decisions with.



When?

- When do we need to have it done by.
- Initially answered from the leaders intent and we can then provide status via data.



Where?

- Where we need to go is driven by data, supported by data, and adjusted by data.



Why?

- Why are we going? This is proven by data.
- Data drives our world in US&R, specifically, GIS data.





Incidents

Click on an **Incident** below to pan to it and view additional info.

Search...

RTF 11 Training

Training

Last Edited: 11/13/2023, 8:55 PM

20231110 VT Flood Testing

Incident Area created to test some flood workflows.

Last Edited: 11/10/2023, 12:43 PM

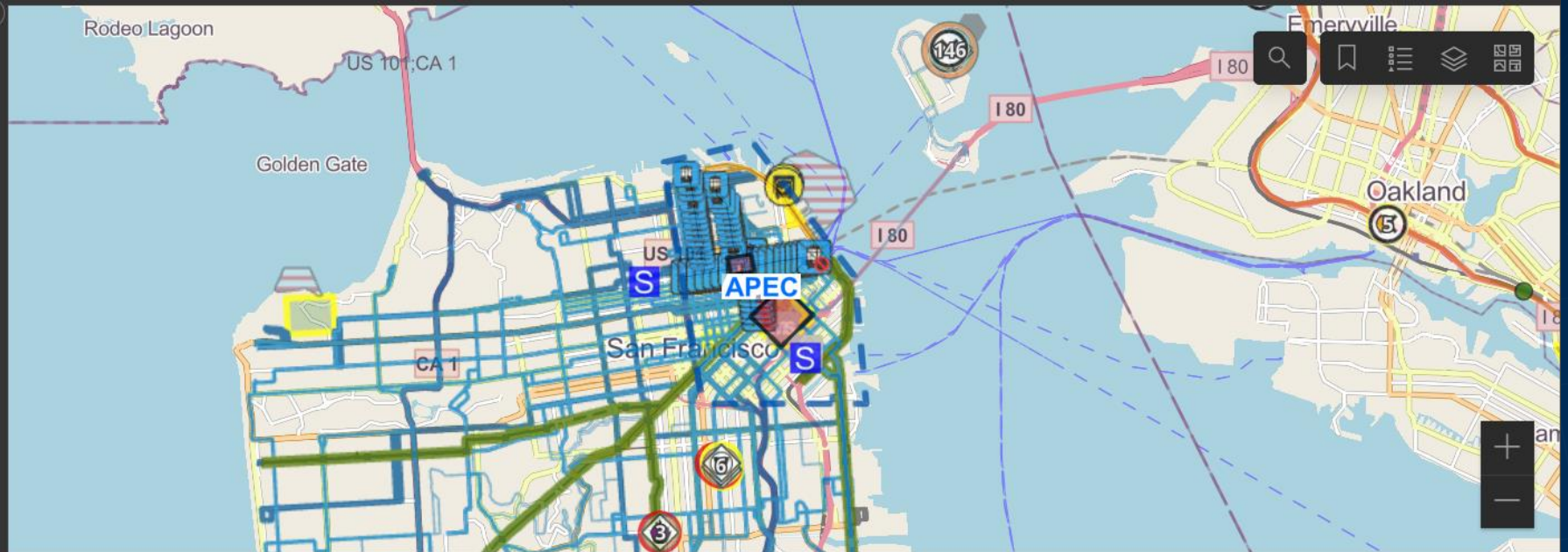
APEC

Last Edited: 11/7/2023, 6:26 PM

20031104 SD

Tornado

Last update: 9 seconds ago



Map data © OpenStreetMap contributors, Microsoft, Facebook, Inc. and its affiliates, Esri Community Maps contributors, Map layer by Esri | NHC, JTW... Powered by Esri



Map



Waypoints

 **43,971**
+ 85 Today

Total waypoints across all categories.

Last update: 8 seconds ago

Confirmed Interactions

 **6,719**
+ 72 Today

Count of confirmed persons encountered.
(!) Does NOT include unconfirmed detections.
Last update: 8 seconds ago

Damage Obs

 **20.9k**
+ 1 Today

Total damage observations across all categories.

Last update: 8 seconds ago

Good Data In...

- We provide regular training to our team.
- We provide “just in time” training to our team.
- We provide rules of engagement



Good Data Out...

- This isn't for a grade, it's life or death data
- It's validation data post incident
- It's save your job data



Good Data Out...

- It's justifying data for your team
 - Needs
 - Budget
 - Proof of concept

Partnerships!

Chad Beam

803-528-0291

Chad.beam@lir.sc.gov

Emily Razzano

813-390-1660

ejrazzano22@gmail.com

THANKS!

Do you have any questions?
email@publicsafetygis.org
napsgfoundation.org/

@napsgfoundation

