



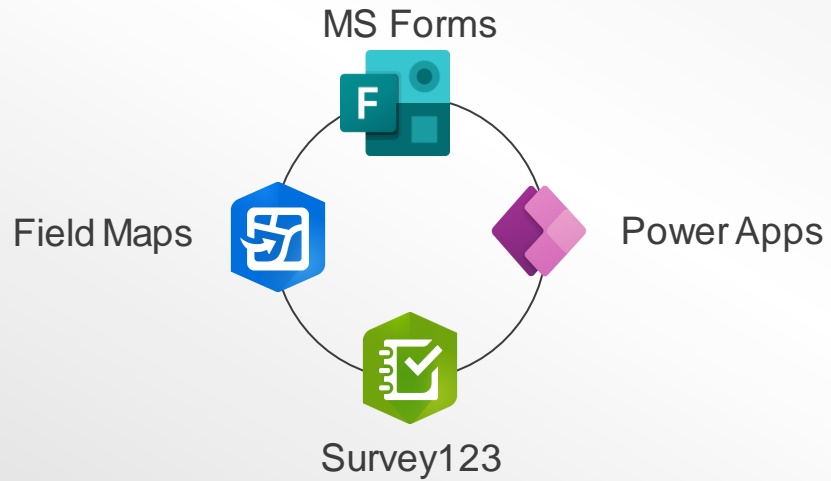
NAPSG Inspire 2023

November 17, 2023

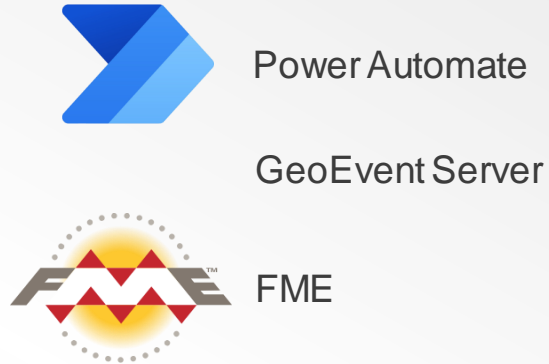
Introductions

- Paul Dean – Associate Vice President
- Amanda Byrd – Data Analytics Team Lead, App Developer

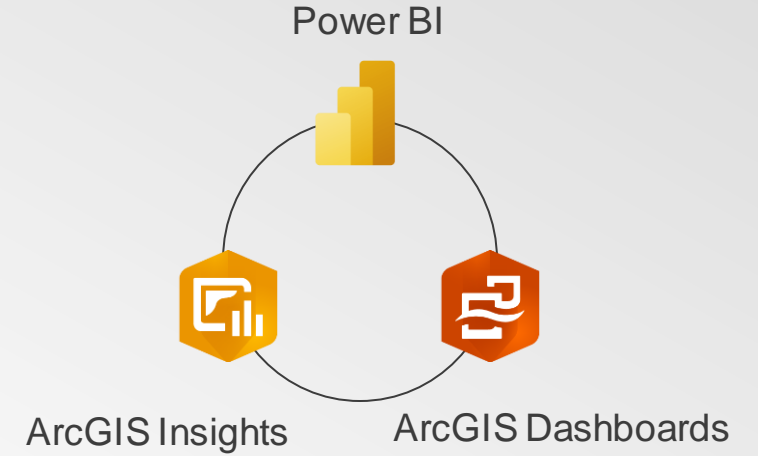
Data Collection



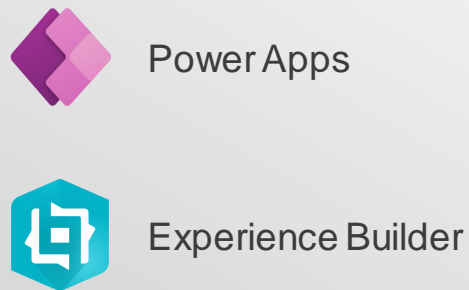
Storage, ETL, and Automation



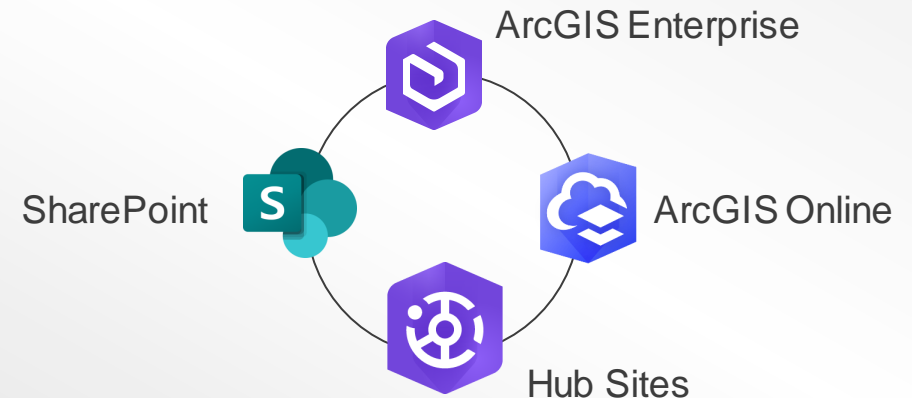
Data Visualization Tools



Solutions



Collaboration Platforms



Data Collection

Data Transformation

**Visualization
and Analytics**

Sharing



Field Maps



FME



**Power BI and
Experience Builder**



Experience Builder



Survey123



Power Automate



Power Apps



SharePoint

Data Collection

- Mobile Collection
- Attachments
- Dynamic
- Offline Capabilities
- Referencing Existing Data

8:33 PM Mon Nov 6 v1.0.a DPR 523 Forms

Related Forms
Additional DPR 523 forms related to this resource

Location Information
Survey Location
38.919°N 77.045°W ± 17.5 m

Other Locational Data
E.g., parcel #, directions to resource, elevation, decimal degrees, etc., as appropriate

County
District of Columbia

City
Washington

Address
1905 Kalorama Rd NW

UTM
18S 322674E 4309827N

Description Information
Resources Present
 Building Structure Object Site
 Other (Isolates, etc.)

Description
Describe resource and its major elements. Include design, materials, condition, alterations, size, setting, and boundaries.

Resource Attributes
Historic Resources Attributes

2 of 2

Report Details

* Report Number: 1

Daily Information

Inspector Name: Graham Blanks

Report Date: 11/9/2023

Contractor Start Time: 11/9/2023 00:00

Contractor End Time: 11/9/2023 00:00

Submit Updates Set Default Personnel

Dredge	Shift	Location	
Dredge 1 Edit	AM	Location 1	
Dredge 1 Edit	PM	Location 2	
Dredge 2 Edit	AM	Location 3 Edit	

Site Photos

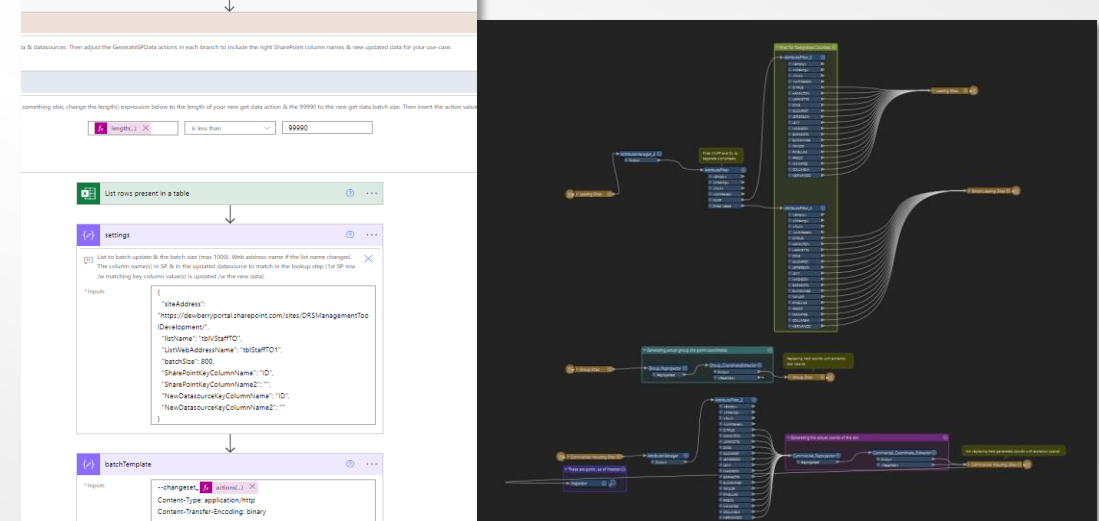
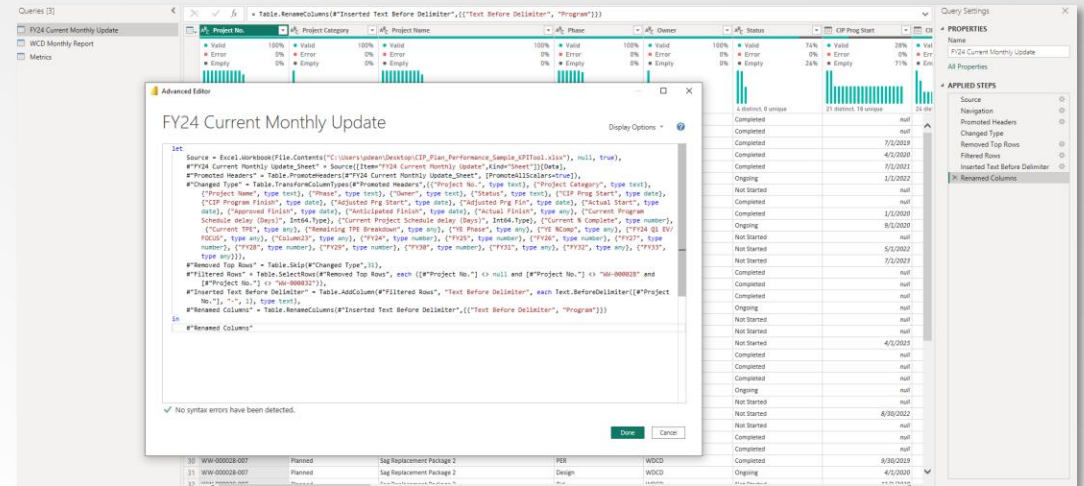
dredge1.PNG Delete

dredge2.JPG Delete

Create New Shift Delete Shift Upload Photos

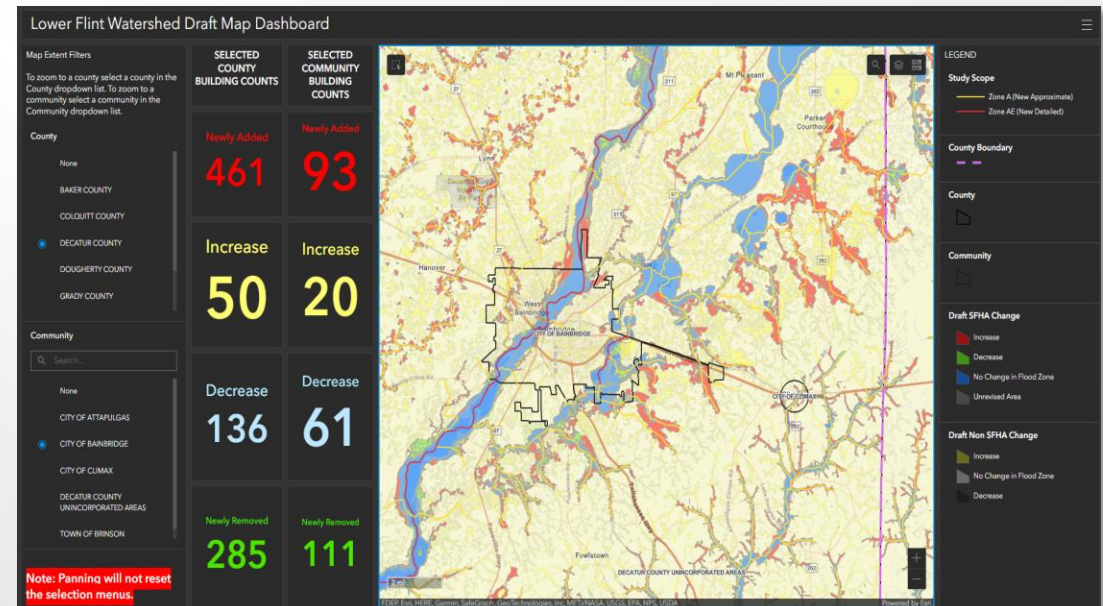
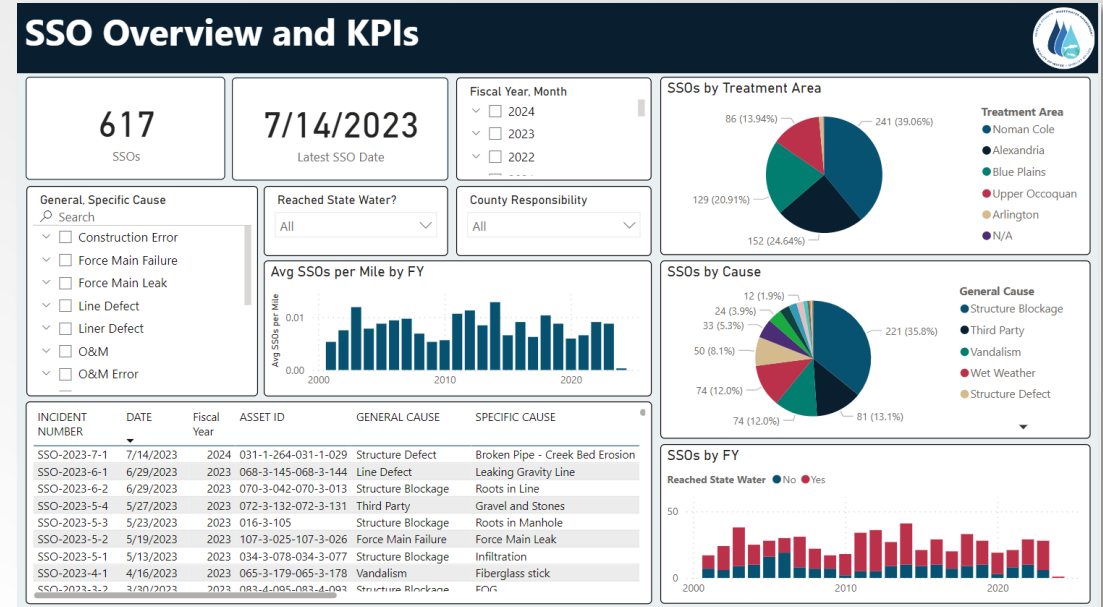
Storage, ETL, and Automation

- Data types and connectors
- Triggering functions
- Moving data from one place to another
- Cleaning and transformation
- Streaming vs scheduled



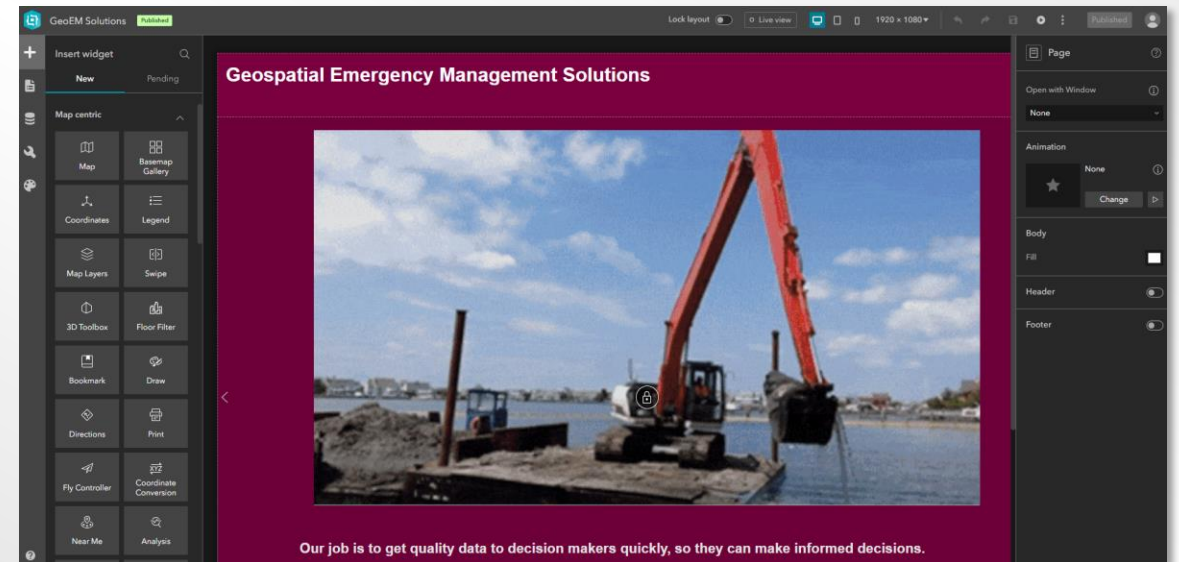
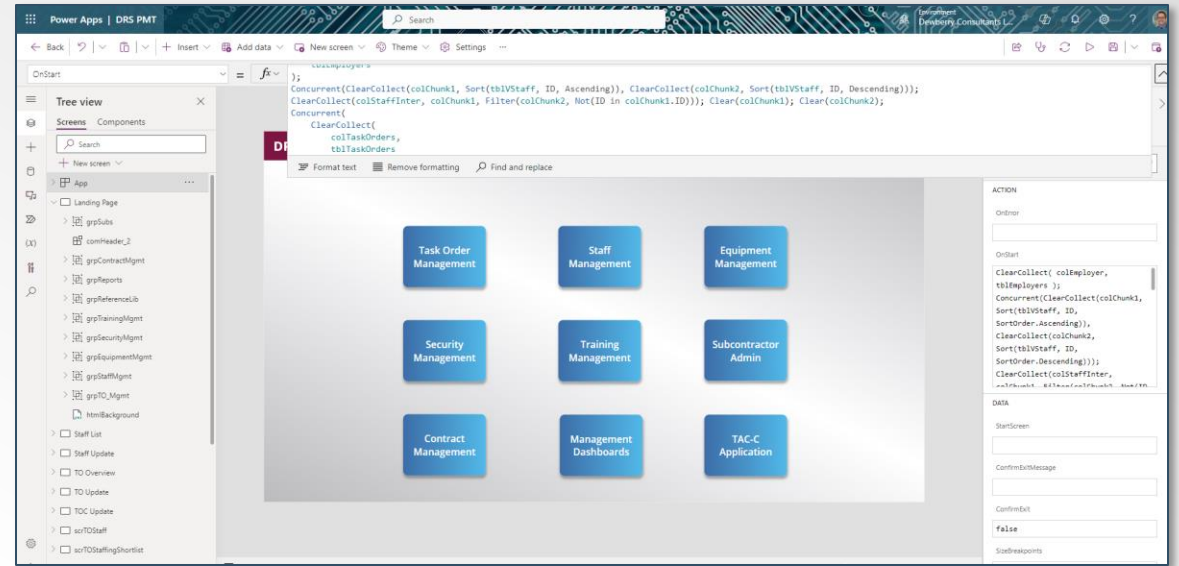
Data Visualization

- Maps
- Charts/graphs
- Inventory
- Exploratory vs Explanatory

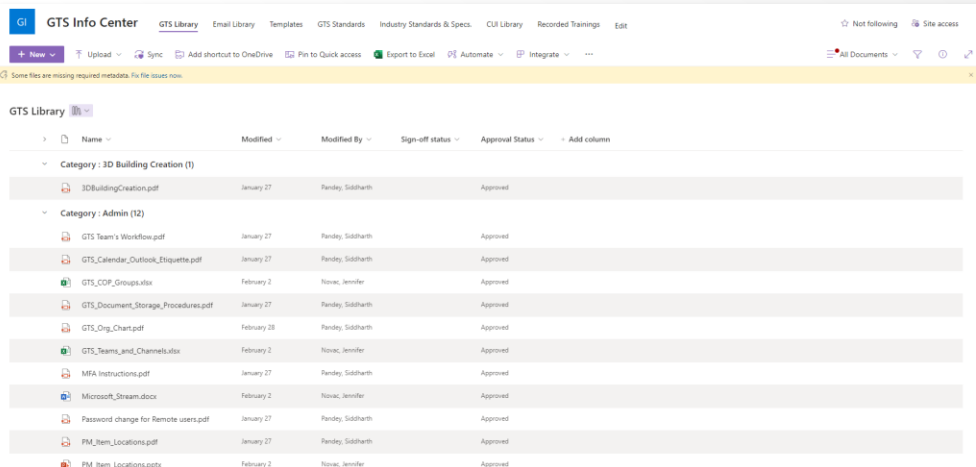
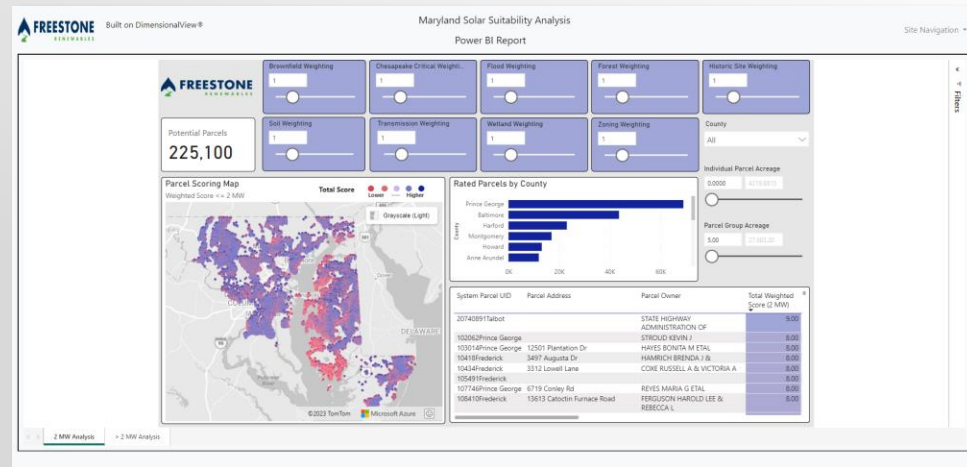
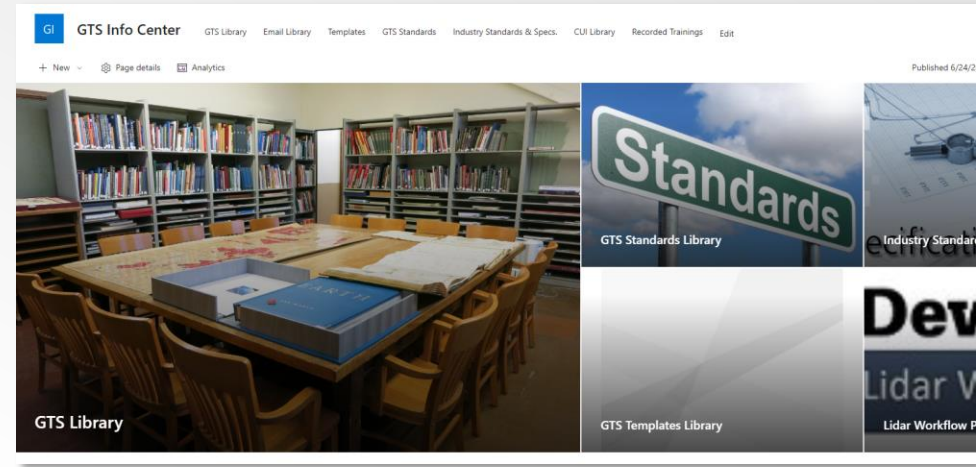
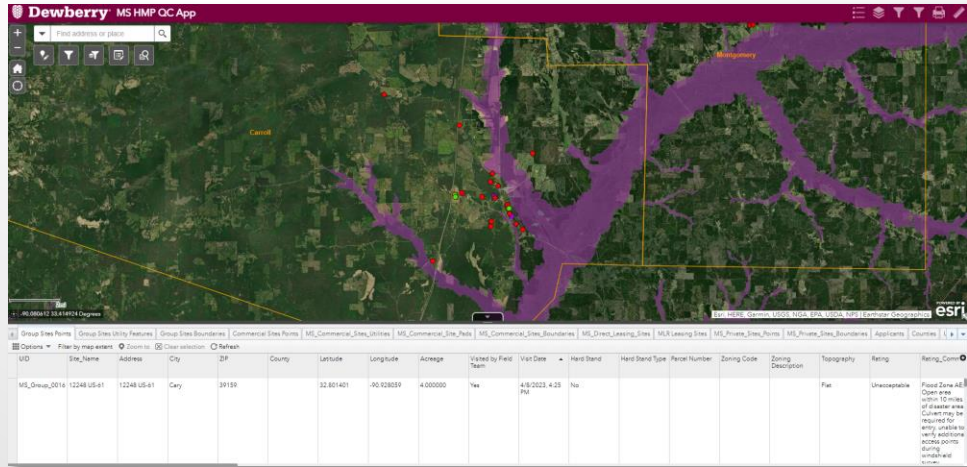


Solutions

- Integrate tools, elements
- Tailor to workflow
- Customize design



Collaboration Platforms



Example Projects

- Field Data Collection
- Dredge Progress Monitoring Application
- State Historic Preservation Inventory

Discussion/Questions

Connect with Us



Paul Dean

ASSOCIATE VICE PRESIDENT
pdean@dewberry.com



Amanda Byrd

DATA ANALYTICS TEAMLEAD
abyrd@dewberry.com