



American Red Cross
Southeast Louisiana Chapter

Hurricane Katrina:

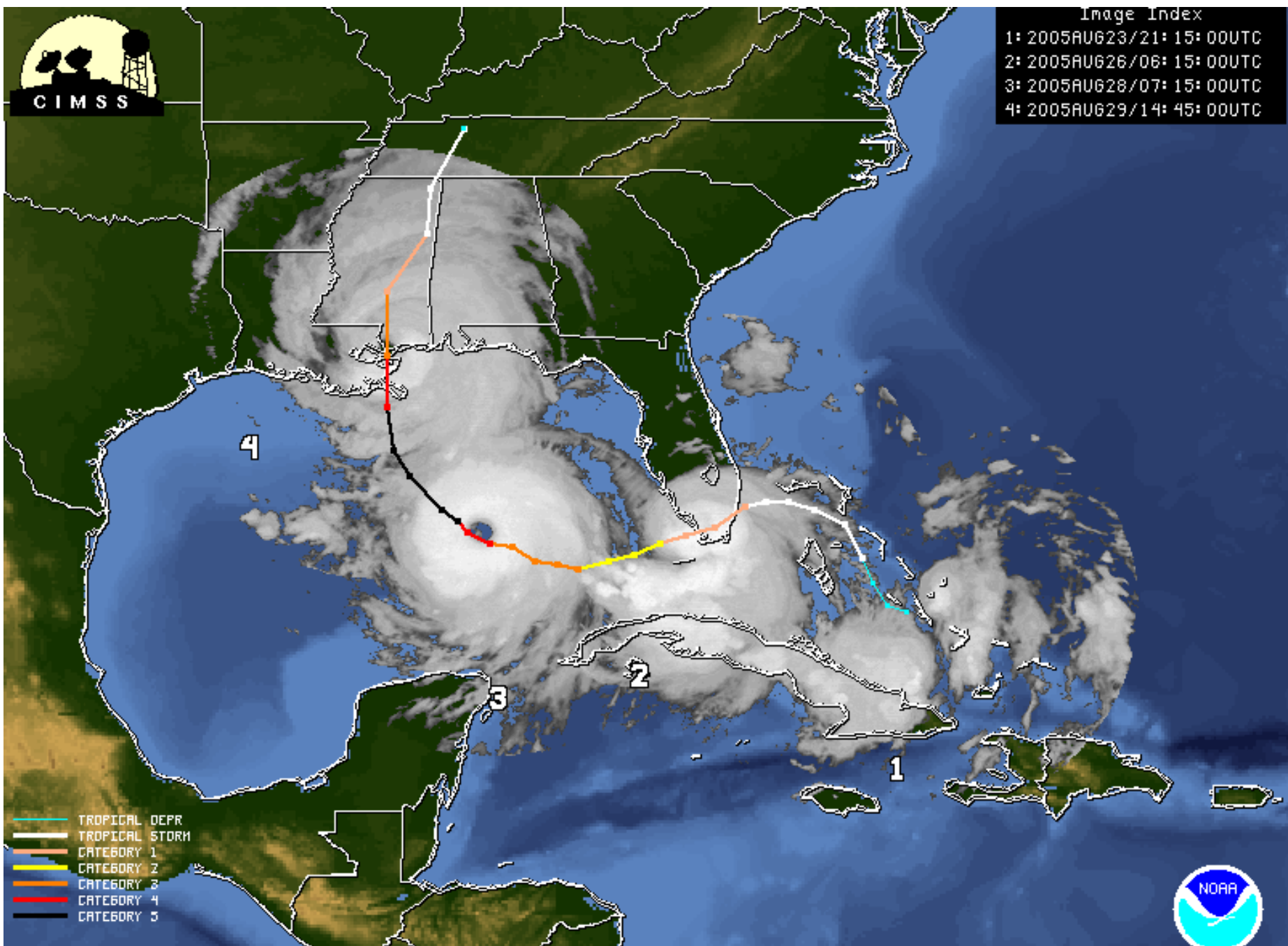
Response Timeline & Lessons Learned





Image Index

1:	2005AUG23/21:	15: 00UTC
2:	2005AUG26/06:	15: 00UTC
3:	2005AUG28/07:	15: 00UTC
4:	2005AUG29/14:	45: 00UTC



- TROPICAL DEPR
- TROPICAL STORM
- CATEGORY 1
- CATEGORY 2
- CATEGORY 3
- CATEGORY 4
- CATEGORY 5



Wednesday, August 25, 2005

SELA

- ~ First solid reports that Katrina was heading for Southeast Louisiana as a Category 4/5 storm.
- ~ The SELA Chapter goes on alert.
- ~ Final pre-Katrina Operation Brother's Keeper meeting. Contraflow and evacuation planning with OBK churches. Evacuation guides distributed to OBK churches.



National

- ~ Katrina strikes Florida as a Cat 1 hurricane with 80 mph winds.
- ~ Nine people reportedly died.
- ~ Governor Jeb Bush declares State of Emergency in Florida.



Saturday, August 27, 2005

SELA

- ~ The SELA Chapter COOPs to the Northshore.
- ~ Shelters begin to open, before nightfall, 18 shelters will be harboring evacuees in areas north of I-12.

State of Louisiana / City of New Orleans

~ **5:00 PM:**

- Nagin declares State of Emergency. Voluntary evacuation order.
- ~ Residents in low-lying areas encouraged to evacuate.

National

5:00 AM:

- Katrina becomes Cat 3 storm with 115 mph winds. Hurricane warning issued for Louisiana's southeastern coast and for the northern Gulf Coast.

Afternoon:

- National Hurricane center Director Max Mayfield calls New Orleans Mayor Nagin to advise for a mandatory evacuation.

6:00 PM:

- Weather Service Prediction: 45% chance that a Cat 4 or 5 storm will hit New Orleans.



Sunday, August 28, 2005

SELA

- ~ With Hurricane Katrina in the Gulf of Mexico as a Category 5 storm, the chapter COOPs to Mt. Herman, north of Covington.
- ~ Last minute shelters open as late as 10pm, during the outer bands of the storm, in total 24 shelters have been opened by SELA chapter.



City of New Orleans

9:30 AM: Regional Transit Authority (RTA) buses begin picking up people in 12 locations throughout the city to take them to 10 refuges of last resort, including the Superdome.

11:00 AM: Nagin orders mandatory evacuation of New Orleans.

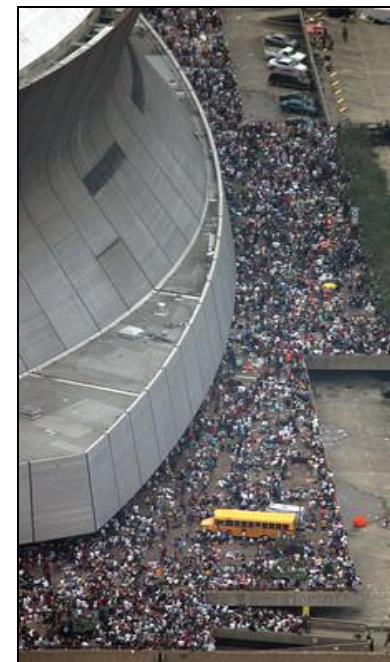
~ Evacuation orders posted all along coast.

Noon: Highways packed. State activates contraflow traffic system and I-10 becomes a one lane highway out of New Orleans.

6:00 PM: Nagin orders a curfew of 6 PM.

State

Noon: Gov. Blanco requests disaster relief funds (some evidence this request was on 8-27)



Monday, August 29, 2005

SELA

6:10 AM: Katrina becomes Cat 4 storm with 145 mph winds, makes landfall as a Cat 3 the morning of the 29th

~ All communication and travel disrupted:

~ Cell towers down

~ Land lines down

~ All media (television, internet, most radio) out

~ Roads blocked by downed trees, water



City of New Orleans

9:00 AM: Lower 9th Ward Levee breaches, and floodwaters inundate the neighborhood.

2:00 PM: City Hall confirms 17th Street levee breach. Combined levee breaches flood 20% of the city.

National

1:45 PM: President Bush declares Emergency Disaster for LA and MS. Frees up federal funds.

~ Coast Guard rescues 1200 from flood; National Guard called in.



Tuesday, August 30, 2005

SELA

- ~ Major roads begin to re-open on the North Shore.
- ~ Disaster director checks status of shelters within St. Tammany/Tangipahoa Parish area.
- ~ Bayou Office reopens with volunteers.

City of New Orleans

9:00 AM:

- Times-Picayune employees evacuate newspaper building in delivery trucks as water rises a foot an hour
- Second levee in New Orleans breaks. Water covers 80% of the city (20 feet high in some places).
- ~ An estimated 50,000-100,000 remain in New Orleans on roofs, the Superdome, and the convention center.

~ 4:30 PM:

- Officials call for anyone with boats to help with rescue mission.

6:30 PM:

- Nagin issues urgent bulletin that waters will continue to rise - 12-15 feet in some places.
- ~ He reports that pumps will soon fail.

8:10 PM:

- Reports suggest looting is widespread.



Wednesday, August 31, 2005

SELA

- ~52,000 people in SELA shelters.
- ~ First substantial DSHR support arrives to assist and relieve chapter personnel.
- ~ Supplies begin to arrive.
- ~ Disaster Director meets with CEO in Covington Emergency Operation Center.
- ~ St. Bernard Parish and Plaquemines Parish experience major storm surge flooding.

City of New Orleans

- ~Unrest worsens in New Orleans.
- ~London Avenue Canal breached.



State

Morning:

--Gov. Blanco requests more National Guardsmen from President Bush. Orders total evacuation of city.

10:00 AM:

--Texas Governor spokesperson says that Superdome refugees will be housed in Astrodome.
~ HHS Secretary declares federal health emergency throughout the Gulf Coast. Sends in medical supplies/workers.

12:30 PM;

-- Refugees begin arriving in Houston at the Astrodome.

As the first busload of Katrina evacuees arrives at the Astrodome, former SELA swim program instructor Laura Chapman is there to greet the evacuees. Laura knows some of the children on board from SELA's program to teach New Orleans public school students to swim. The children reveal to Laura that knowing how to swim saved their lives.





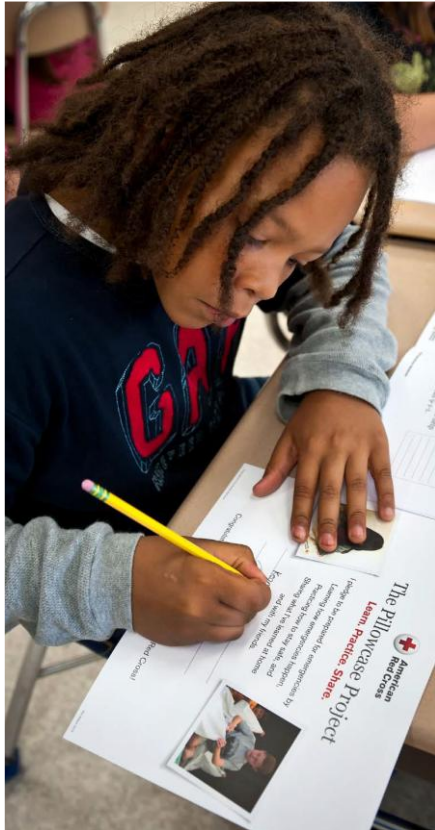
Kitchen Set up...St. Tammany Courthouse
Mandeville







Pillowcase Project



- **The Pillowcase Project has experienced consistent growth and improvement since its inception following Hurricane Katrina.**
- **Adopted by Disney and formally developed in 2013, The Pillowcase Project trained our 1,000,000th last year.**
- **It is now offered by all Red Cross regions nationwide**

Faith Based Summit on Preparedness....and General Honore'



